

I HEREBY CERTIFY THAT THIS MAP AND THE SURVEY HAS BEEN MADE UNDER MY IMMEDIATE SUPERVISION AND COMPLIES WITH THE LAWS OF THE STATE OF NEW JERSEY DATE OCT. 1, 1989
Robert Marshall - P.E. & L.S. #11309

NEW JERSEY DEPARTMENT OF THE TREASURY
DIVISION OF TAXATION
PUBLIC UTILITY TAX BUREAU
APPROVED AS A TAX MAP PURSUANT TO THE PROVISIONS OF CHAPTER 175, LAWS OF 1913, ETC. FOR THE DIRECTOR, DIVISION OF TAXATION
DATE: JAN 16 1970 SERIAL NO. 480

I HEREBY CERTIFY THAT THIS MAP AND THE SURVEY HAS BEEN MADE UNDER MY IMMEDIATE SUPERVISION AND COMPLIES WITH THE LAWS OF THE STATE OF NEW JERSEY DATE OCT. 1, 1984
Albert H. Godrian
ALBERT H. GODRIAN L.S. #9087

NEW JERSEY DEPARTMENT OF THE TREASURY
DIVISION OF TAXATION
PUBLIC UTILITY TAX BUREAU
APPROVED AS A TAX MAP PURSUANT TO THE PROVISIONS OF CHAPTER 175, LAWS OF 1913, ETC. FOR THE DIRECTOR, DIVISION OF TAXATION
DATE: OCT 27 1984 SERIAL NO. 418

I HEREBY CERTIFY THAT THIS MAP AND THE SURVEY HAS BEEN MADE UNDER MY IMMEDIATE SUPERVISION AND COMPLIES WITH THE LAWS OF THE STATE OF NEW JERSEY DATE SEPT. 25, 1978
Robert Marshall - P.E. & L.S. #11309

NEW JERSEY DEPARTMENT OF THE TREASURY
DIVISION OF TAXATION
LOCAL PROPERTY AND PUBLIC UTILITY BRANCH
APPROVED AS A TAX MAP PURSUANT TO THE PROVISIONS OF CHAPTER 175, LAWS OF 1913, ETC. FOR THE DIRECTOR, DIVISION OF TAXATION
DATE: JUL 8 1982 SERIAL NO. 741
John Pappas F.S.B.S.
LIC. 015434 CHIEF, ENGINEERING SECTION

I HEREBY CERTIFY THAT THIS MAP AND THE SURVEY HAS BEEN MADE UNDER MY IMMEDIATE SUPERVISION AND COMPLIES WITH THE LAWS OF THE STATE OF NEW JERSEY DATE OCT. 1, 1990
D.M.S. L.S. # 33098

TAX MAP
VILLAGE OF RIDGEWOOD
BERGEN COUNTY, N.J.
ROBERT MARSHALL P.E. & L.S. 11309
SCALE: 1" = 100'

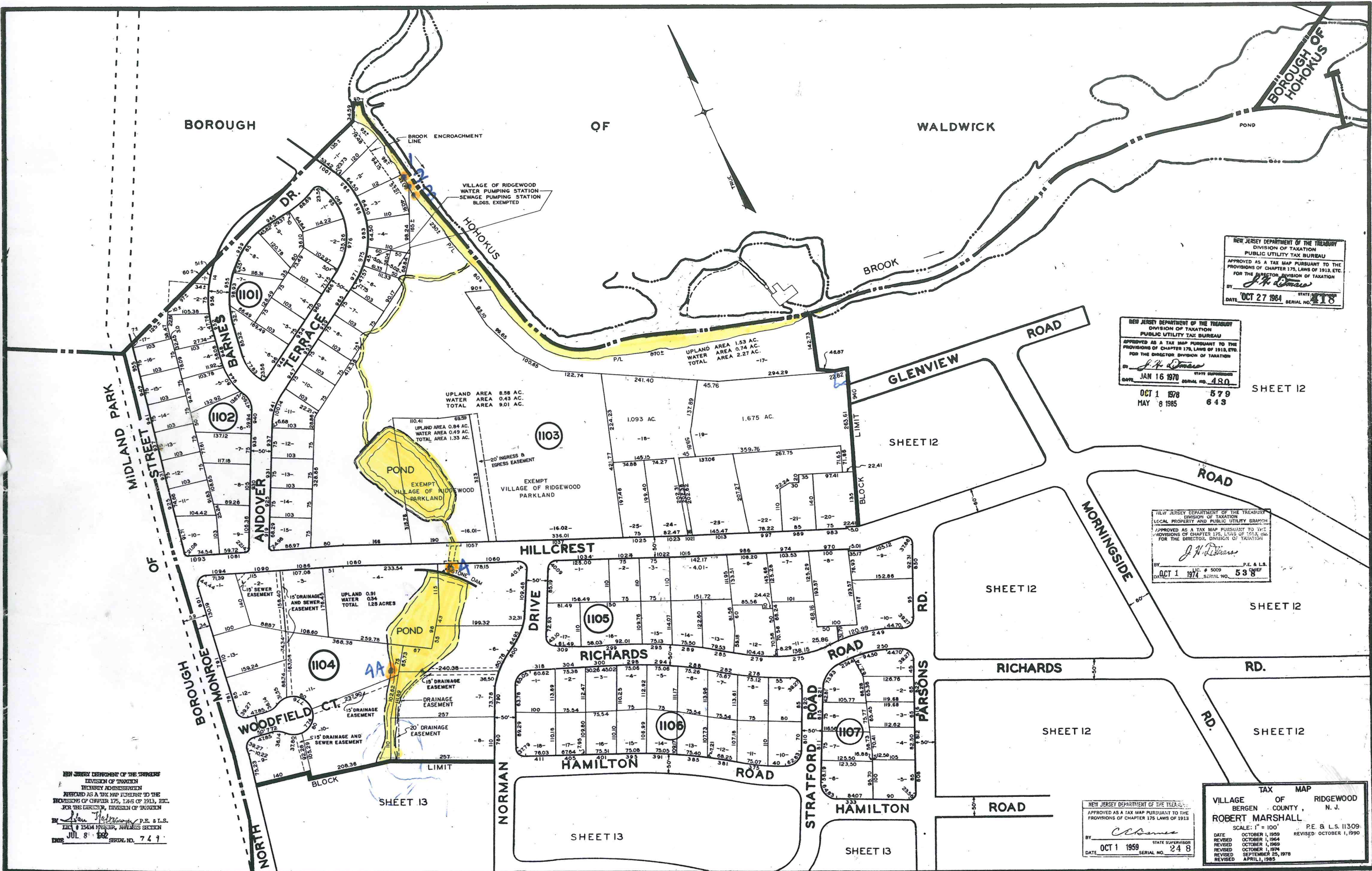
I HEREBY CERTIFY THAT THIS MAP AND THE SURVEY HAS BEEN MADE UNDER MY IMMEDIATE SUPERVISION AND COMPLIES WITH THE LAWS OF THE STATE OF NEW JERSEY DATE: JULY 1979
Daniel M. Dunn L.S. #33098

I HEREBY CERTIFY THAT THIS MAP AND THE SURVEY HAS BEEN MADE UNDER MY IMMEDIATE SUPERVISION AND COMPLIES WITH THE LAWS OF THE STATE OF NEW JERSEY DATE: OCT. 1, 2000
Daniel M. Dunn L.S. #33098

I HEREBY CERTIFY THAT THIS MAP AND THE SURVEY HAS BEEN MADE UNDER MY IMMEDIATE SUPERVISION AND COMPLIES WITH THE LAWS OF THE STATE OF NEW JERSEY DATE: OCT. 1, 2005
Daniel M. Dunn L.S. #33098

NEW JERSEY DEPARTMENT OF THE TREASURY
DIVISION OF TAXATION
LOCAL PROPERTY AND PUBLIC UTILITY BRANCH
APPROVED AS A TAX MAP PURSUANT TO THE PROVISIONS OF CHAPTER 175, LAWS OF 1913, ETC. FOR THE DIRECTOR, DIVISION OF TAXATION
DATE: OCT 1 1972 SERIAL NO. 538
Robert Marshall P.E. & L.S. #11309

I HEREBY CERTIFY THAT THIS MAP AND THE SURVEY HAS BEEN MADE UNDER MY IMMEDIATE SUPERVISION AND COMPLIES WITH THE LAWS OF THE STATE OF NEW JERSEY DATE OCT. 1, 1974
Robert Marshall - P.E. & L.S. #11309



NEW JERSEY DEPARTMENT OF THE TREASURY
 DIVISION OF TAXATION
 PUBLIC UTILITY TAX BUREAU
 APPROVED AS A TAX MAP PURSUANT TO THE
 PROVISIONS OF CHAPTER 175, LAWS OF 1913, ETC.
 FOR THE DIRECTOR, DIVISION OF TAXATION
 BY *J. H. Dumas*
 DATE: OCT 27 1964 SERIAL NO. 418

NEW JERSEY DEPARTMENT OF THE TREASURY
 DIVISION OF TAXATION
 PUBLIC UTILITY TAX BUREAU
 APPROVED AS A TAX MAP PURSUANT TO THE
 PROVISIONS OF CHAPTER 175, LAWS OF 1913, ETC.
 FOR THE DIRECTOR, DIVISION OF TAXATION
 BY *J. H. Dumas*
 DATE: JAN 16 1970 SERIAL NO. 480

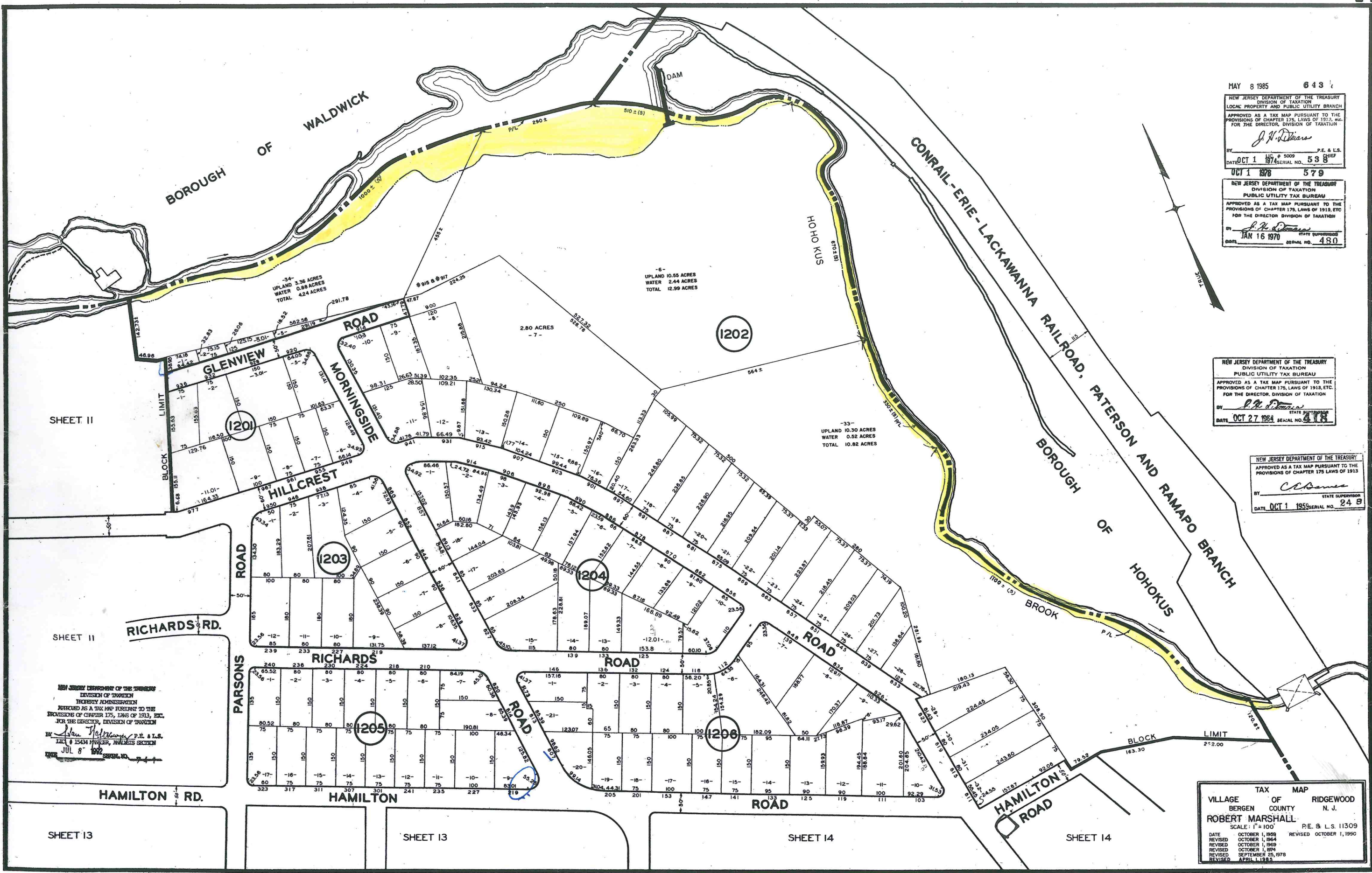
OCT 1 1978 579
 MAY 8 1985 643

NEW JERSEY DEPARTMENT OF THE TREASURY
 DIVISION OF TAXATION
 LOCAL PROPERTY AND PUBLIC UTILITY BRANCH
 APPROVED AS A TAX MAP PURSUANT TO THE
 PROVISIONS OF CHAPTER 175, LAWS OF 1913, ETC.
 FOR THE DIRECTOR, DIVISION OF TAXATION
 BY *J. H. Dumas*
 DATE: OCT 1 1974 SERIAL NO. 538

NEW JERSEY DEPARTMENT OF THE TREASURY
 DIVISION OF TAXATION
 APPROVED AS A TAX MAP PURSUANT TO THE
 PROVISIONS OF CHAPTER 175, LAWS OF 1913
 BY *C. B. Baines*
 DATE: OCT 1 1959 SERIAL NO. 248

TAX MAP
 VILLAGE OF RIDGEWOOD
 BERGEN COUNTY, N. J.
 ROBERT MARSHALL
 SCALE: 1" = 100'
 DATE: OCTOBER 1, 1959
 REVISED: OCTOBER 1, 1964
 REVISED: OCTOBER 1, 1969
 REVISED: OCTOBER 1, 1974
 REVISED: SEPTEMBER 25, 1978
 REVISED: APRIL, 1985
 P.E. & L.S. 11309
 REEF

NEW JERSEY DEPARTMENT OF THE TREASURY
 DIVISION OF TAXATION
 PROPERTY ADMINISTRATION
 REFERRED AS A TAX MAP PURSUANT TO THE
 PROVISIONS OF CHAPTER 175, LAWS OF 1913, ETC.
 FOR THE DIRECTOR, DIVISION OF TAXATION
 BY *John H. Dumas* P.E. & L.S.
 DATE: JUL 8 1982 SERIAL NO. 749



MAY 8 1985 643

NEW JERSEY DEPARTMENT OF THE TREASURY
DIVISION OF TAXATION
LOCAL PROPERTY AND PUBLIC UTILITY BRANCH

APPROVED AS A TAX MAP PURSUANT TO THE PROVISIONS OF CHAPTER 175, LAWS OF 1913, ETC. FOR THE DIRECTOR, DIVISION OF TAXATION

BY *J. H. Diwan* P.E. & L.S. CHIEF

DATE OCT 1 1974 SERIAL NO. 538

OCT 1 1978 579

NEW JERSEY DEPARTMENT OF THE TREASURY
DIVISION OF TAXATION
PUBLIC UTILITY TAX BUREAU

APPROVED AS A TAX MAP PURSUANT TO THE PROVISIONS OF CHAPTER 175, LAWS OF 1913, ETC. FOR THE DIRECTOR, DIVISION OF TAXATION

BY *J. H. Diwan* STATE SUPERVISOR

DATE JAN 16 1970 SERIAL NO. 480

NEW JERSEY DEPARTMENT OF THE TREASURY
DIVISION OF TAXATION
PUBLIC UTILITY TAX BUREAU

APPROVED AS A TAX MAP PURSUANT TO THE PROVISIONS OF CHAPTER 175, LAWS OF 1913, ETC. FOR THE DIRECTOR, DIVISION OF TAXATION

BY *J. H. Diwan* STATE SUPERVISOR

DATE OCT 27 1984 SERIAL NO. 418

NEW JERSEY DEPARTMENT OF THE TREASURY
DIVISION OF TAXATION
PUBLIC UTILITY TAX BUREAU

APPROVED AS A TAX MAP PURSUANT TO THE PROVISIONS OF CHAPTER 175 LAWS OF 1913

BY *C. J. Bames* STATE SUPERVISOR

DATE OCT 1 1955 SERIAL NO. 248

NEW JERSEY DEPARTMENT OF THE TREASURY
DIVISION OF TAXATION
PROPERTY ADMINISTRATION

APPROVED AS A TAX MAP PURSUANT TO THE PROVISIONS OF CHAPTER 175, LAWS OF 1913, ETC. FOR THE DIRECTOR, DIVISION OF TAXATION

BY *John H. Williams* P.E. & L.S. CHIEF

DATE JUL 8 1972 SERIAL NO. 77

VILLAGE TAX MAP
RIDGEWOOD N. J.

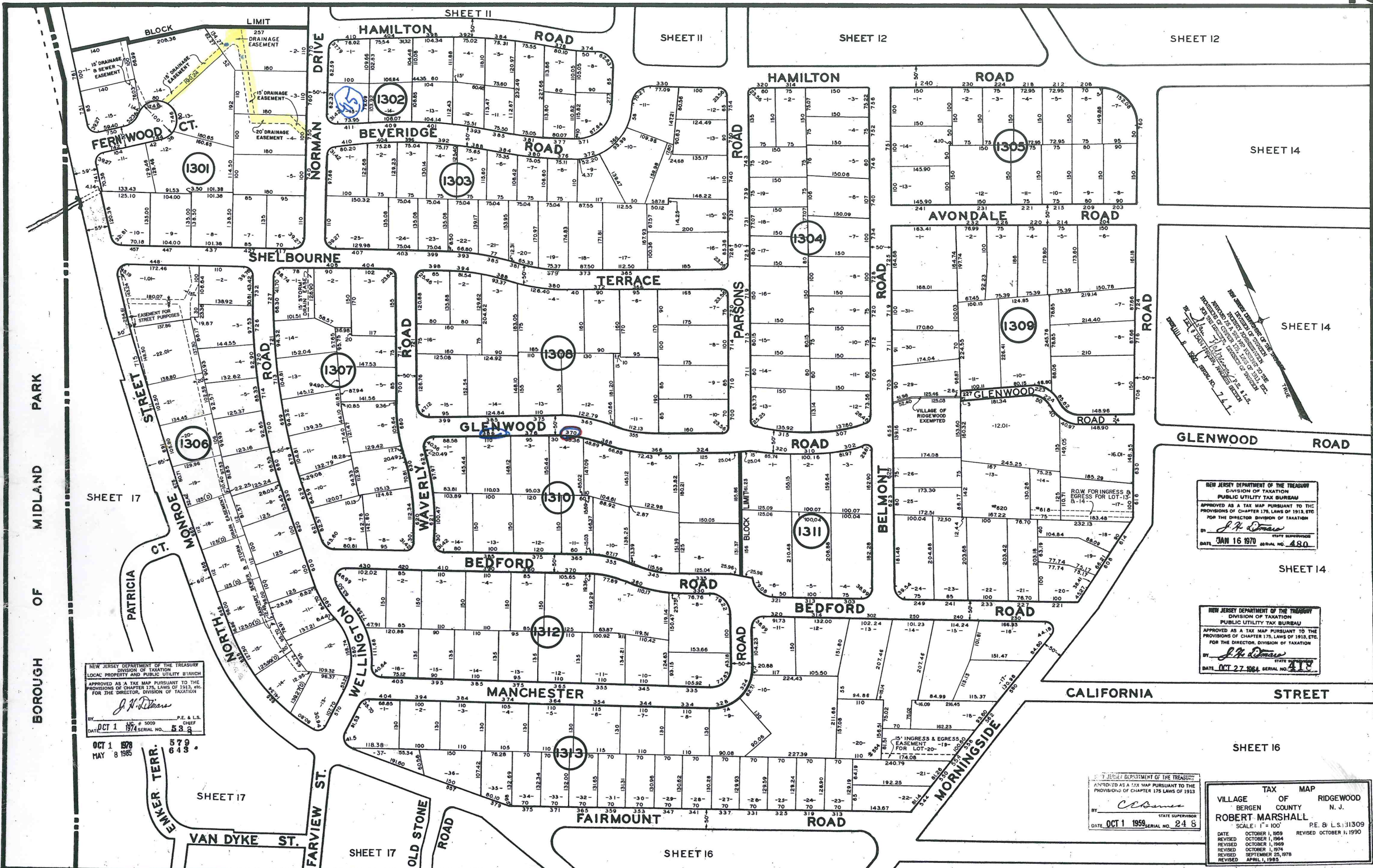
BERGEN COUNTY

ROBERT MARSHALL

SCALE: 1" = 100'

P.E. & L.S. 11309

DATE OCTOBER 1, 1959
REVISED OCTOBER 1, 1964
REVISED OCTOBER 1, 1969
REVISED OCTOBER 1, 1974
REVISED SEPTEMBER 25, 1978
REVISED APRIL 1, 1985



NEW JERSEY DEPARTMENT OF THE TREASURY
DIVISION OF TAXATION
LOCAL PROPERTY AND PUBLIC UTILITY TAX BUREAU
APPROVED AS A TAX MAP PURSUANT TO THE
PROVISIONS OF CHAPTER 175, LAWS OF 1913, ETC.
FOR THE DIRECTOR, DIVISION OF TAXATION
BY: *J. H. Omas* P.E. & L.S. CHIEF
DATE: OCT 1 1978 # 5009 SERIAL NO. 53

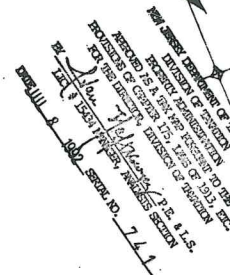
OCT 1 1978 579
MAY 8 1985 643

NEW JERSEY DEPARTMENT OF THE TREASURY
DIVISION OF TAXATION
PUBLIC UTILITY TAX BUREAU
APPROVED AS A TAX MAP PURSUANT TO THE
PROVISIONS OF CHAPTER 175, LAWS OF 1913, ETC.
FOR THE DIRECTOR, DIVISION OF TAXATION
BY: *J. H. Omas* STATE SUPERVISOR
DATE: JAN 16 1970 SERIAL NO. 480

NEW JERSEY DEPARTMENT OF THE TREASURY
DIVISION OF TAXATION
PUBLIC UTILITY TAX BUREAU
APPROVED AS A TAX MAP PURSUANT TO THE
PROVISIONS OF CHAPTER 175, LAWS OF 1913, ETC.
FOR THE DIRECTOR, DIVISION OF TAXATION
BY: *J. H. Omas* STATE SUPERVISOR
DATE: OCT 27 1964 SERIAL NO. 418

NEW JERSEY DEPARTMENT OF THE TREASURY
APPROVED AS A TAX MAP PURSUANT TO THE
PROVISIONS OF CHAPTER 175 LAWS OF 1913
BY: *C. Omas* STATE SUPERVISOR
DATE: OCT 1 1959 SERIAL NO. 248

TAX MAP
VILLAGE OF RIDGEWOOD
BERGEN COUNTY N. J.
ROBERT MARSHALL
SCALE: 1" = 100' P.E. & L.S. 11309
DATE: OCTOBER 1, 1959
REVISED: OCTOBER 1, 1964
REVISED: OCTOBER 1, 1969
REVISED: OCTOBER 1, 1974
REVISED: SEPTEMBER 25, 1978
REVISED: APRIL 1, 1985



SHEET 14

SHEET 14

SHEET 14

SHEET 16

SHEET 17

SHEET 17

SHEET 16

SHEET 17

SHEET 11

SHEET 12

SHEET 12

BOROUGH OF MIDLAND PARK

NEW JERSEY DEPARTMENT OF THE TREASURY
 DIVISION OF TAXATION
 PROPERTY ADMINISTRATION
 APPROVED AS A TAX MAP PURSUANT TO THE
 PROVISIONS OF CHAPTER 175, LAWS OF 1913, ETC.
 FOR THE DIRECTOR, DIVISION OF TAXATION
J. H. Dumas P.E. & L.S.
 DATE JUL 8 1978 SERIAL NO. 748

NEW JERSEY DEPARTMENT OF THE TREASURY
 DIVISION OF TAXATION
 LOCAL PROPERTY AND PUBLIC UTILITY BRANCH
 APPROVED AS A TAX MAP PURSUANT TO THE
 PROVISIONS OF CHAPTER 175, LAWS OF 1913, ETC.
 FOR THE DIRECTOR, DIVISION OF TAXATION
J. H. Dumas P.E. & L.S.
 DATE OCT 1 1974 SERIAL NO. 538
 OCT 1 1978
 MAY 8 1985 538

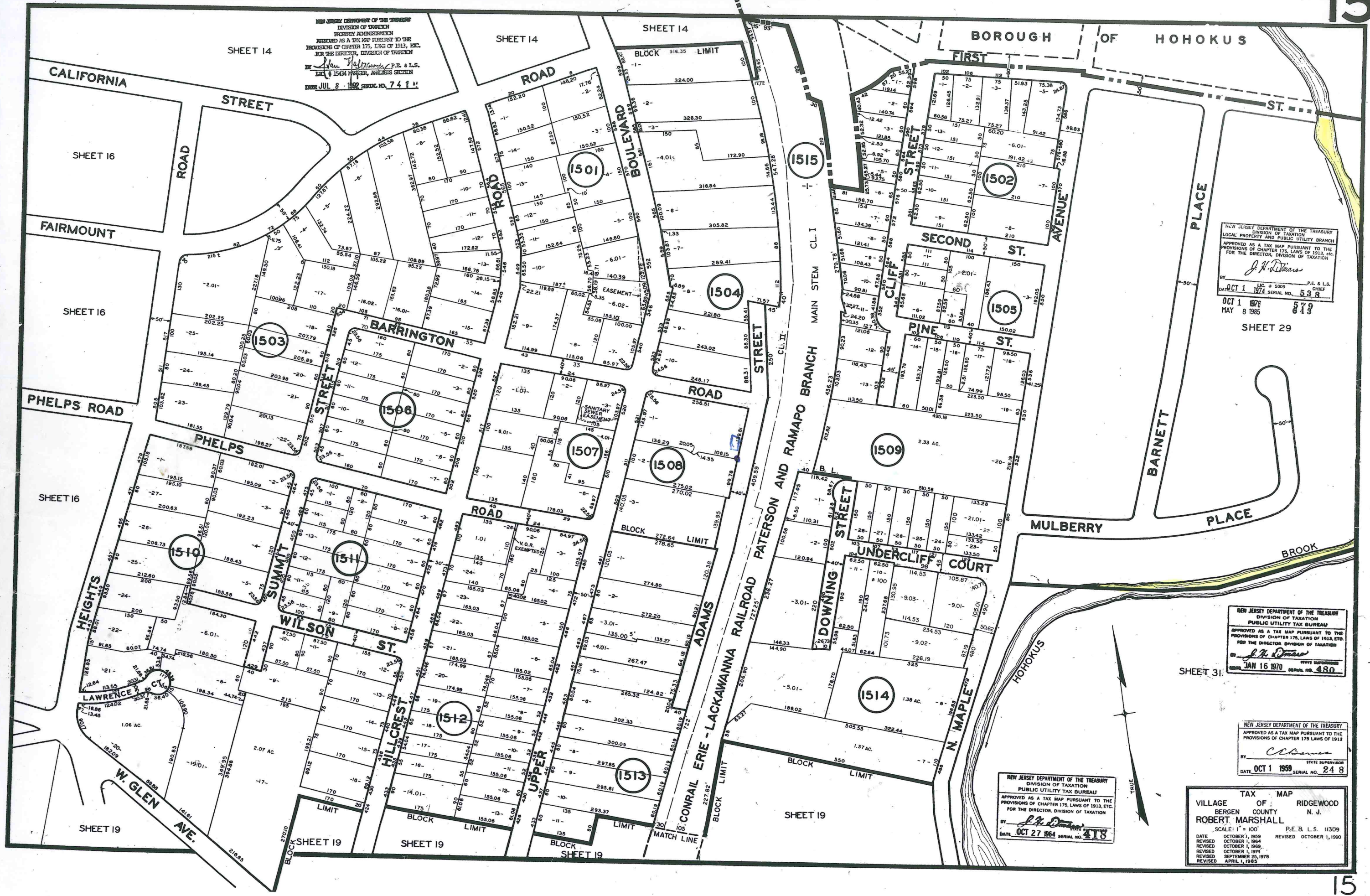
SHEET 29

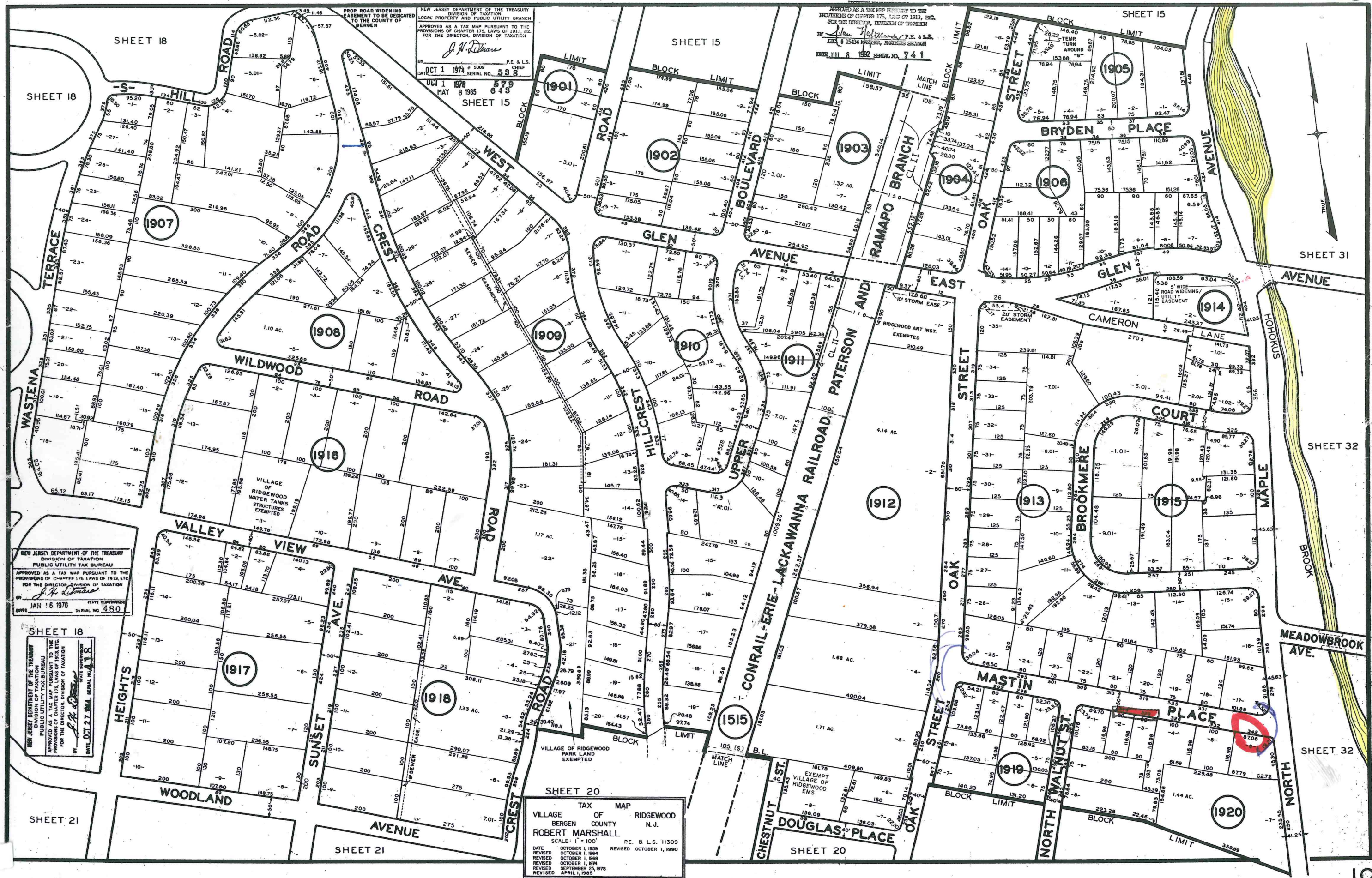
NEW JERSEY DEPARTMENT OF THE TREASURY
 DIVISION OF TAXATION
 PUBLIC UTILITY TAX BUREAU
 APPROVED AS A TAX MAP PURSUANT TO THE
 PROVISIONS OF CHAPTER 175, LAWS OF 1913, ETC.
 FOR THE DIRECTOR, DIVISION OF TAXATION
J. H. Dumas STATE SUPERVISOR
 DATE JAN 16 1970 SERIAL NO. 480

SHEET 31

NEW JERSEY DEPARTMENT OF THE TREASURY
 DIVISION OF TAXATION
 PUBLIC UTILITY TAX BUREAU
 APPROVED AS A TAX MAP PURSUANT TO THE
 PROVISIONS OF CHAPTER 175, LAWS OF 1913
C. Dumas STATE SUPERVISOR
 DATE OCT 1 1959 SERIAL NO. 248

VILLAGE TAX MAP
 OF RIDGEWOOD
 BERGEN COUNTY N. J.
 ROBERT MARSHALL
 SCALE: 1" = 100'
 P.E. & L.S. 11309
 DATE OCTOBER 1, 1959 REVISED OCTOBER 1, 1964
 REVISED OCTOBER 1, 1965
 REVISED OCTOBER 1, 1974
 REVISED SEPTEMBER 25, 1978
 REVISED APRIL 1, 1985





NEW JERSEY DEPARTMENT OF THE TREASURY
DIVISION OF TAXATION
LOCAL PROPERTY AND PUBLIC UTILITY BRANCH

APPROVED AS A TAX MAP PURSUANT TO THE PROVISIONS OF CHAPTER 175, LAWS OF 1913, ETC. FOR THE DIRECTOR, DIVISION OF TAXATION

J. N. Deane

BY *J. N. Deane* P.E. & L.S. CHIEF
DATE **OCT 1 1979** # 5009 SERIAL NO. **538**

DATE **OCT 1 1978** # 5779 SERIAL NO. **643**
MAY 8 1985

NEW JERSEY DEPARTMENT OF THE TREASURY
DIVISION OF TAXATION

APPROVED AS A TAX MAP PURSUANT TO THE PROVISIONS OF CHAPTER 175, LAWS OF 1913, ETC. FOR THE DIRECTOR, DIVISION OF TAXATION

John J. Williams P.E. & L.S.
DATE **MAY 15 1984** # 15434 SERIAL NO. **741**

NEW JERSEY DEPARTMENT OF THE TREASURY
DIVISION OF TAXATION
PUBLIC UTILITY TAX BUREAU

APPROVED AS A TAX MAP PURSUANT TO THE PROVISIONS OF CHAPTER 175, LAWS OF 1913, ETC. FOR THE DIRECTOR, DIVISION OF TAXATION

J. R. Deane

DATE **JAN 16 1970** # 480 SERIAL NO. **480**

NEW JERSEY DEPARTMENT OF THE TREASURY
DIVISION OF TAXATION
PUBLIC UTILITY TAX BUREAU

APPROVED AS A TAX MAP PURSUANT TO THE PROVISIONS OF CHAPTER 175, LAWS OF 1913, ETC. FOR THE DIRECTOR, DIVISION OF TAXATION

J. R. Deane

DATE **OCT 27 1981** # 1118 SERIAL NO. **1118**

SHEET 20

VILLAGE TAX MAP OF RIDGEWOOD
BERGEN COUNTY N. J.
ROBERT MARSHALL

SCALE: 1" = 100'

DATE OCTOBER 1, 1959 REVISION OCTOBER 1, 1990
REVISED OCTOBER 1, 1964
REVISED OCTOBER 1, 1969
REVISED OCTOBER 1, 1974
REVISED SEPTEMBER 25, 1976
REVISED APRIL 1, 1985

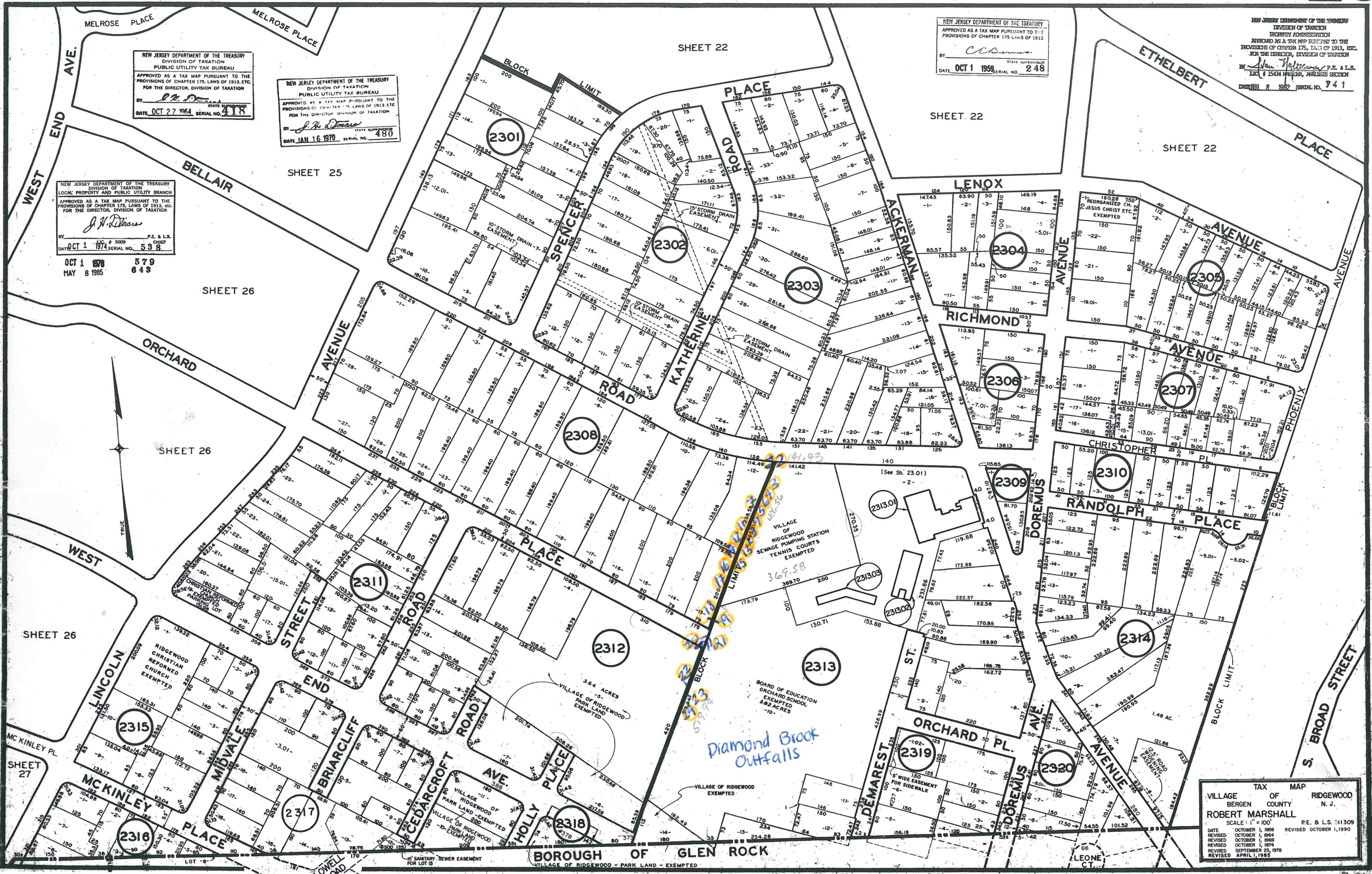
NEW JERSEY DEPARTMENT OF THE TREASURY
 DIVISION OF TAXATION
 APPROVED AS A TAX MAP PURSUANT TO THE
 PROVISIONS OF CHAPTER 175, LAWS OF 1913,
 BY *[Signature]* STATE SUPERVISOR
 DATE OCT 1 1959 SERIAL NO. 248

NEW JERSEY DEPARTMENT OF THE TREASURY
 DIVISION OF TAXATION
 PROPERTY ADMINISTRATION
 APPROVED AS A TAX MAP PURSUANT TO THE
 PROVISIONS OF CHAPTER 175, LAWS OF 1913, ETC.
 FOR THE DIRECTOR, DIVISION OF TAXATION
 BY *[Signature]* P.E. & L.S.
 DATE JAN 16 1970 SERIAL NO. 480

NEW JERSEY DEPARTMENT OF THE TREASURY
 DIVISION OF TAXATION
 PUBLIC UTILITY TAX BUREAU
 APPROVED AS A TAX MAP PURSUANT TO THE
 PROVISIONS OF CHAPTER 175, LAWS OF 1913, ETC.
 FOR THE DIRECTOR, DIVISION OF TAXATION
 BY *[Signature]* STATE SUPERVISOR
 DATE OCT 27 1964 SERIAL NO. 418

NEW JERSEY DEPARTMENT OF THE TREASURY
 DIVISION OF TAXATION
 PUBLIC UTILITY TAX BUREAU
 APPROVED AS A TAX MAP PURSUANT TO THE
 PROVISIONS OF CHAPTER 175, LAWS OF 1913, ETC.
 FOR THE DIRECTOR, DIVISION OF TAXATION
 BY *[Signature]* STATE SUPERVISOR
 DATE JAN 16 1970 SERIAL NO. 480

NEW JERSEY DEPARTMENT OF THE TREASURY
 DIVISION OF TAXATION
 LOCAL PROPERTY AND PUBLIC UTILITY BRANCH
 APPROVED AS A TAX MAP PURSUANT TO THE
 PROVISIONS OF CHAPTER 175, LAWS OF 1913, ETC.
 FOR THE DIRECTOR, DIVISION OF TAXATION
 BY *[Signature]* P.E. & L.S.
 DATE OCT 1 1970 SERIAL NO. 538
 OCT 1 1970 579
 MAY 8 1965 643



VILLAGE TAX MAP
 OF
 RIDGEWOOD
 BERGEN COUNTY N. J.
 ROBERT MARSHALL
 SCALE: 1" = 100'
 DATE OCTOBER 1, 1969 REVISOR OCTOBER 1, 1990
 REVISED OCTOBER 1, 1964
 REVISED OCTOBER 1, 1969
 REVISED OCTOBER 1, 1974
 REVISED SEPTEMBER 25, 1978
 REVISED APRIL 1, 1985

NEW JERSEY DEPARTMENT OF THE TREASURY
 DIVISION OF TAXATION
 PUBLIC UTILITY TAX BUREAU
 APPROVED AS A TAX MAP PURSUANT TO THE
 PROVISIONS OF CHAPTER 175, LAWS OF 1913, ETC.
 FOR THE DIRECTOR, DIVISION OF TAXATION
 BY *J. H. Adams* P.E. & L.S.
 DATE OCT 1 1974 SERIAL NO. 579

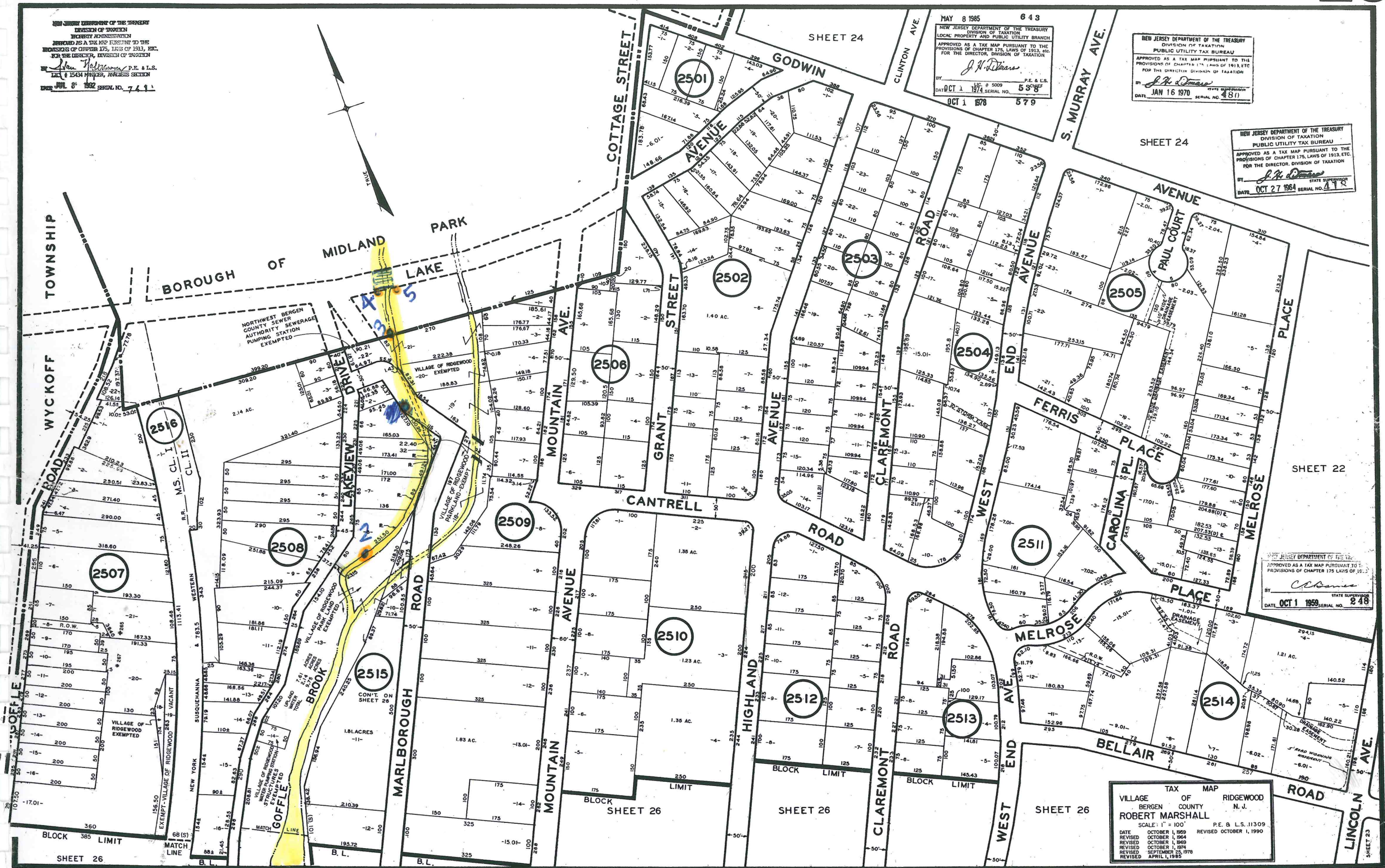
MAY 8 1985 643
 NEW JERSEY DEPARTMENT OF THE TREASURY
 DIVISION OF TAXATION
 LOCAL PROPERTY AND PUBLIC UTILITY BRANCH
 APPROVED AS A TAX MAP PURSUANT TO THE
 PROVISIONS OF CHAPTER 175, LAWS OF 1913, ETC.
 FOR THE DIRECTOR, DIVISION OF TAXATION
 BY *J. H. Adams* P.E. & L.S.
 DATE OCT 1 1974 SERIAL NO. 579

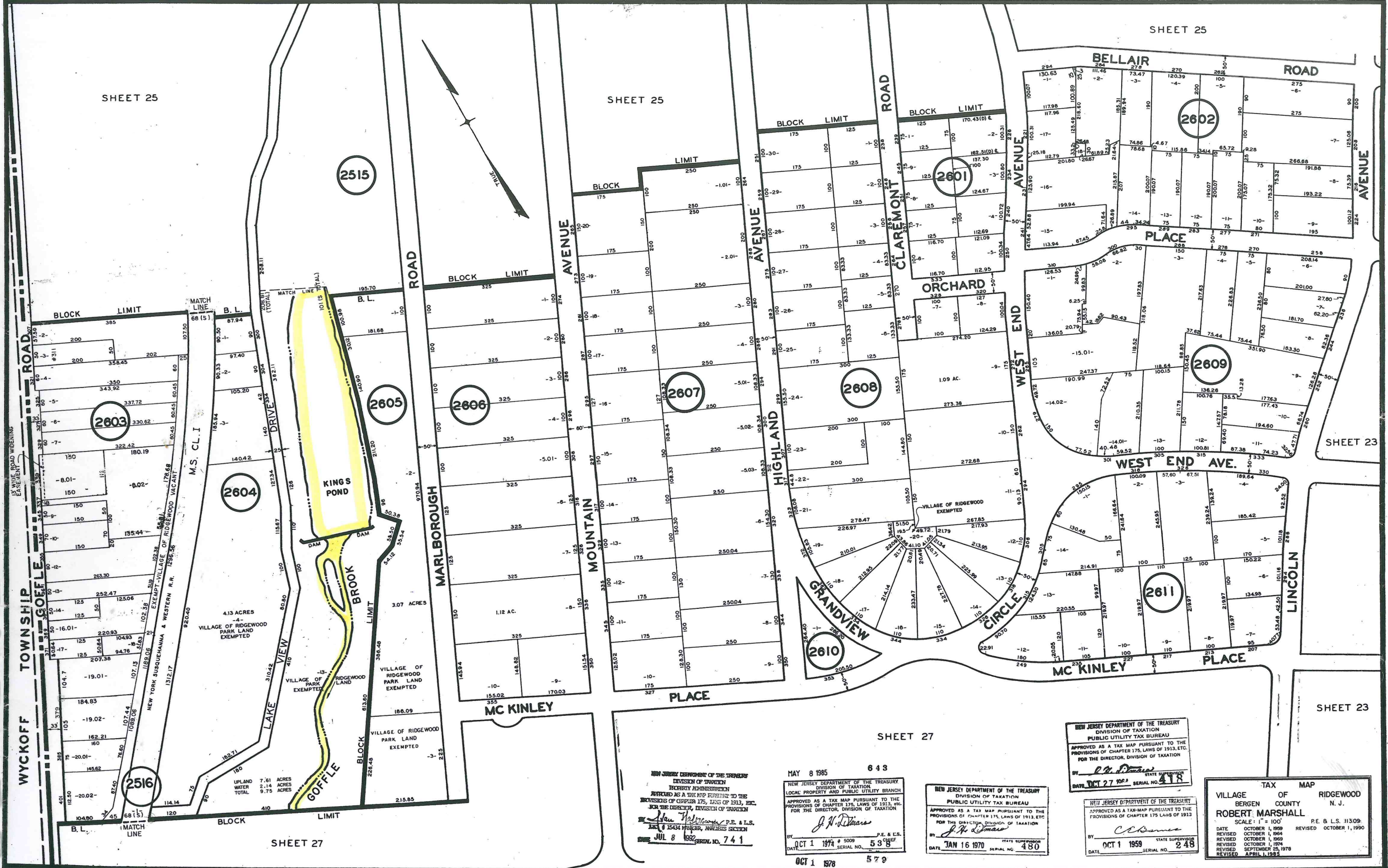
NEW JERSEY DEPARTMENT OF THE TREASURY
 DIVISION OF TAXATION
 PUBLIC UTILITY TAX BUREAU
 APPROVED AS A TAX MAP PURSUANT TO THE
 PROVISIONS OF CHAPTER 175, LAWS OF 1913, ETC.
 FOR THE DIRECTOR, DIVISION OF TAXATION
 BY *J. H. Adams* P.E. & L.S.
 DATE JAN 16 1970 SERIAL NO. 480

NEW JERSEY DEPARTMENT OF THE TREASURY
 DIVISION OF TAXATION
 PUBLIC UTILITY TAX BUREAU
 APPROVED AS A TAX MAP PURSUANT TO THE
 PROVISIONS OF CHAPTER 175, LAWS OF 1913, ETC.
 FOR THE DIRECTOR, DIVISION OF TAXATION
 BY *J. H. Adams* P.E. & L.S.
 DATE OCT 27 1964 SERIAL NO. 478

NEW JERSEY DEPARTMENT OF THE TREASURY
 DIVISION OF TAXATION
 PUBLIC UTILITY TAX BUREAU
 APPROVED AS A TAX MAP PURSUANT TO THE
 PROVISIONS OF CHAPTER 175 LAWS OF 1913...
 BY *C. Adams* P.E. & L.S.
 DATE OCT 1 1959 SERIAL NO. 248

TAX MAP
 VILLAGE OF RIDGEWOOD
 BERGEN COUNTY N. J.
 ROBERT MARSHALL
 SCALE: 1" = 100'
 P.E. & L.S. 11309
 DATE OCTOBER 1, 1959 REVISED OCTOBER 1, 1964
 REVISED OCTOBER 1, 1964 REVISED OCTOBER 1, 1974
 REVISED OCTOBER 1, 1974 REVISED OCTOBER 1, 1978
 REVISED APRIL 1, 1985





SHEET 25

SHEET 25

SHEET 25

SHEET 23

SHEET 23

SHEET 27

SHEET 27

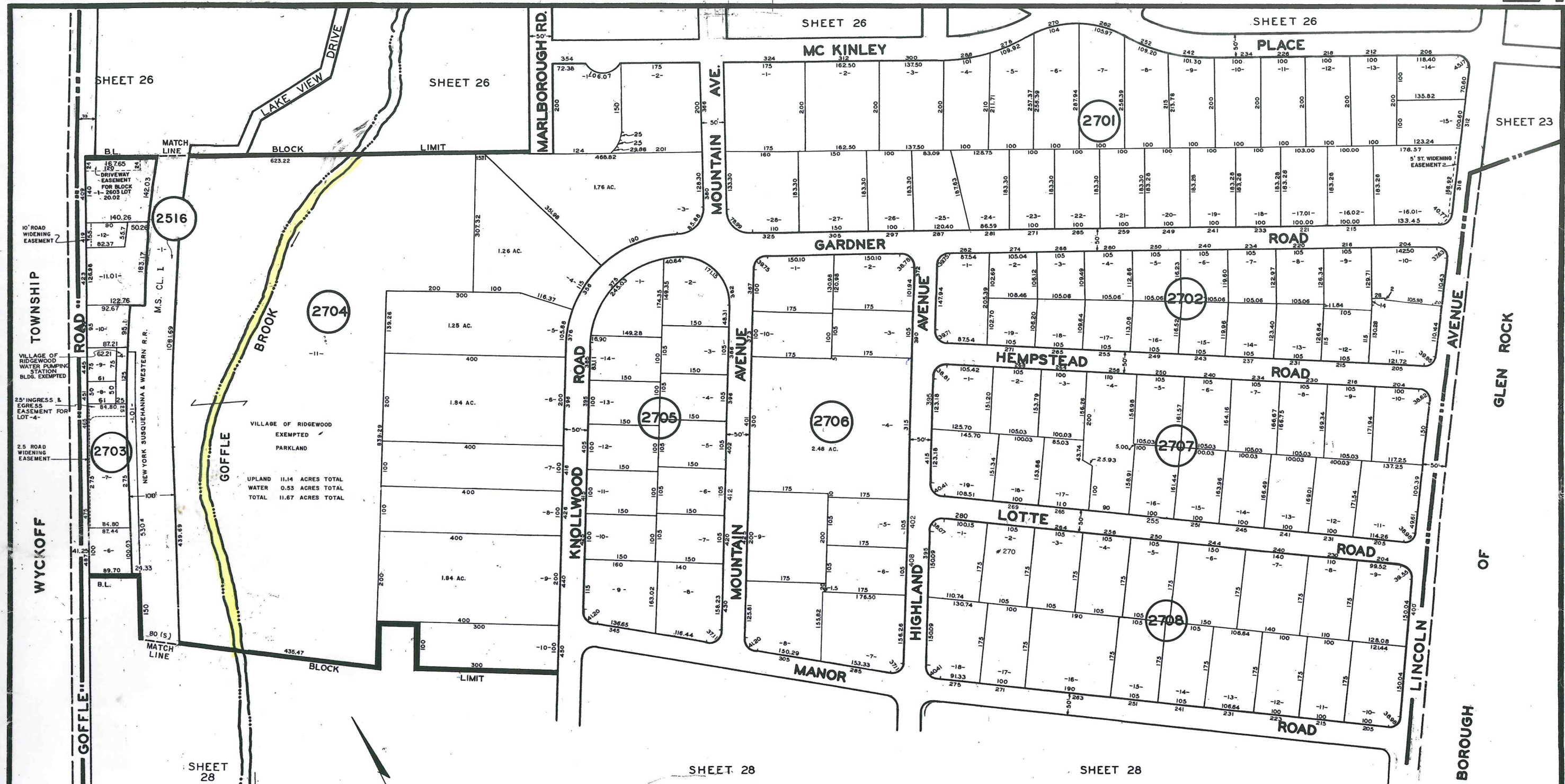
NEW JERSEY DEPARTMENT OF THE TREASURY
 DIVISION OF TAXATION
 EXEMPT REMINDERS
 REFERRED AS A TAX MAP PURSUANT TO THE
 PROVISIONS OF CHAPTER 175, LAWS OF 1913, ETC.
 FOR THE DIRECTOR, DIVISION OF TAXATION
J. H. Dumas P.E. & L.S.
 JUL 8 1992 SERIAL NO. 741

MAY 8 1985 643
 NEW JERSEY DEPARTMENT OF THE TREASURY
 DIVISION OF TAXATION
 LOCAL PROPERTY AND PUBLIC UTILITY BRANCH
 APPROVED AS A TAX MAP PURSUANT TO THE
 PROVISIONS OF CHAPTER 175, LAWS OF 1913, ETC.
 FOR THE DIRECTOR, DIVISION OF TAXATION
J. H. Dumas P.E. & L.S.
 OCT 1 1979 # 5009 538
 DATE OCT 1 1978 SERIAL NO. 579

NEW JERSEY DEPARTMENT OF THE TREASURY
 DIVISION OF TAXATION
 PUBLIC UTILITY TAX BUREAU
 APPROVED AS A TAX MAP PURSUANT TO THE
 PROVISIONS OF CHAPTER 175, LAWS OF 1913, ETC.
 FOR THE DIRECTOR, DIVISION OF TAXATION
J. H. Dumas
 DATE JAN 16 1970 SERIAL NO. 480

NEW JERSEY DEPARTMENT OF THE TREASURY
 DIVISION OF TAXATION
 PUBLIC UTILITY TAX BUREAU
 APPROVED AS A TAX MAP PURSUANT TO THE
 PROVISIONS OF CHAPTER 175, LAWS OF 1913, ETC.
 FOR THE DIRECTOR, DIVISION OF TAXATION
J. H. Dumas STATE SUPERVISOR
 DATE OCT 27 1979 SERIAL NO. 478

TAX MAP
 VILLAGE OF RIDGEWOOD
 BERGEN COUNTY N. J.
 ROBERT MARSHALL
 SCALE: 1" = 100'
 P.E. & L.S. 11309
 DATE OCTOBER 1, 1999
 REVISED OCTOBER 1, 1994
 REVISED OCTOBER 1, 1989
 REVISED OCTOBER 1, 1974
 REVISED SEPTEMBER 25, 1978
 REVISED APRIL 1, 1953



NEW JERSEY DEPARTMENT OF THE TREASURY
 DIVISION OF TAXATION
 APPROVED AS A TAX MAP PURSUANT TO THE
 PROVISIONS OF CHAPTER 175, LAWS OF 1913, ETC.
 FOR THE DIRECTOR, DIVISION OF TAXATION
 BY: *C. D. ...*
 STATE SUPERVISOR
 DATE: OCT 1 1959 SERIAL NO. 248

NEW JERSEY DEPARTMENT OF THE TREASURY
 DIVISION OF TAXATION
 PROPERTY ADMINISTRATION
 APPROVED AS A TAX MAP PURSUANT TO THE
 PROVISIONS OF CHAPTER 175, LAWS OF 1913, ETC.
 FOR THE DIRECTOR, DIVISION OF TAXATION
 BY: *John ...* P.E. & L.S.
 DATE: MAY 8 1962 SERIAL NO. 244

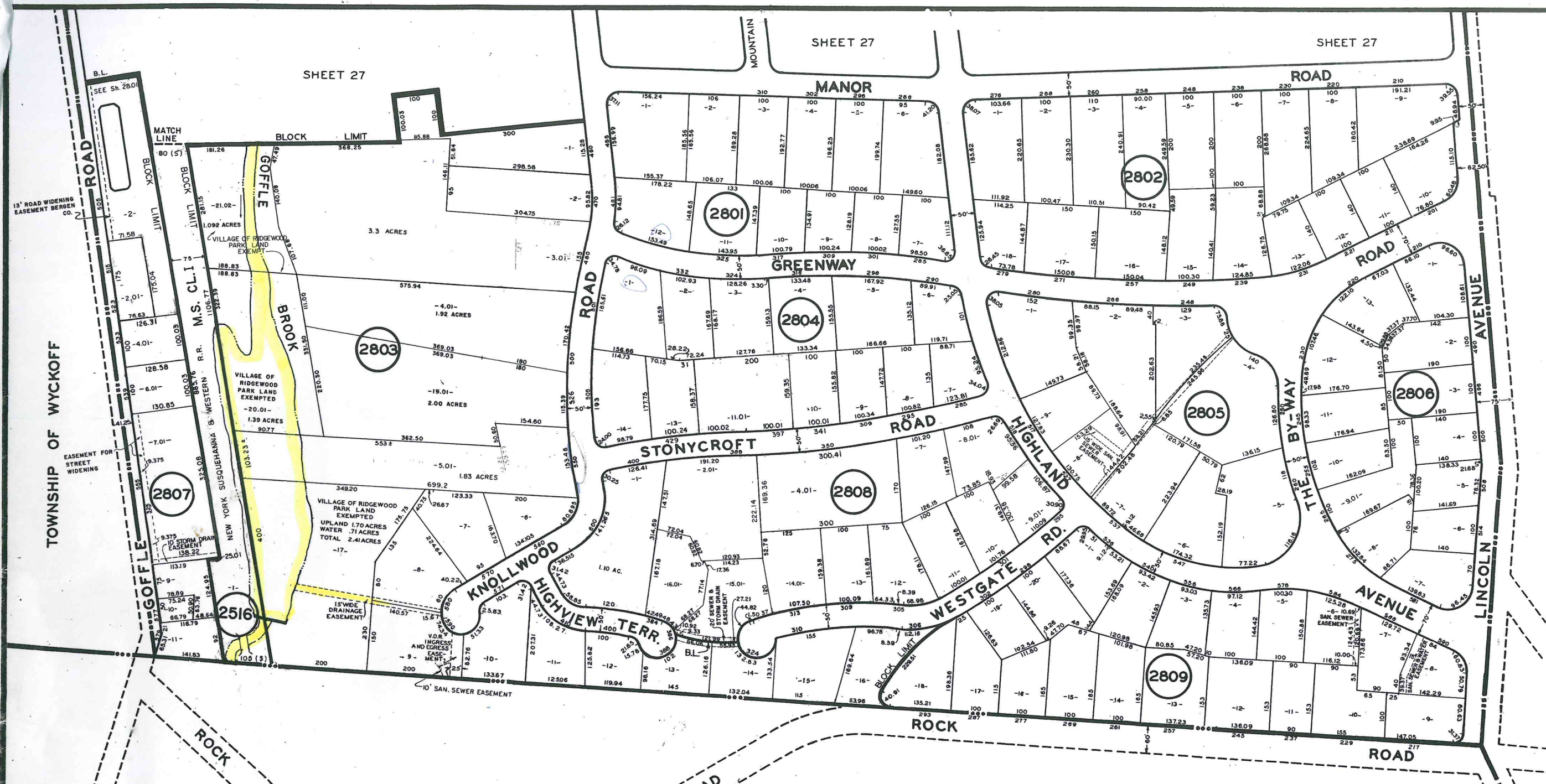
MAY 8 1965 643
 OCT 1 1978 579

NEW JERSEY DEPARTMENT OF THE TREASURY
 DIVISION OF TAXATION
 LOCAL PROPERTY AND PUBLIC UTILITY TAX BRANCH
 APPROVED AS A TAX MAP PURSUANT TO THE
 PROVISIONS OF CHAPTER 175, LAWS OF 1913, ETC.
 FOR THE DIRECTOR, DIVISION OF TAXATION
 BY: *J. H. ...*
 P.E. & L.S.
 DATE: OCT 1 1974 SERIAL NO. 538

NEW JERSEY DEPARTMENT OF THE TREASURY
 DIVISION OF TAXATION
 PUBLIC UTILITY TAX BUREAU
 APPROVED AS A TAX MAP PURSUANT TO THE
 PROVISIONS OF CHAPTER 175, LAWS OF 1913, ETC.
 FOR THE DIRECTOR, DIVISION OF TAXATION
 BY: *J. H. ...*
 STATE SUPERVISOR
 DATE: JAN 16 1970 SERIAL NO. 480

NEW JERSEY DEPARTMENT OF THE TREASURY
 DIVISION OF TAXATION
 PUBLIC UTILITY TAX BUREAU
 APPROVED AS A TAX MAP PURSUANT TO THE
 PROVISIONS OF CHAPTER 175, LAWS OF 1913, ETC.
 FOR THE DIRECTOR, DIVISION OF TAXATION
 BY: *J. H. ...*
 STATE SUPERVISOR
 DATE: OCT 27 1964 SERIAL NO. 418

TAX MAP
 VILLAGE OF RIDGEWOOD
 BERGEN COUNTY N. J.
 ROBERT MARSHALL
 SCALE: 1" = 100'
 P.E. & L.S. 31309
 DATE: OCTOBER 1, 1959
 REVISED: OCTOBER 1, 1964
 REVISED: OCTOBER 1, 1969
 REVISED: OCTOBER 1, 1974
 REVISED: SEPTEMBER 25, 1978
 REVISED: APRIL 1, 1985



BOROUGH OF HAWTHORNE
PASSAIC COUNTY

NEW JERSEY DEPARTMENT OF THE TREASURY
DIVISION OF TAXATION
PUBLIC UTILITY TAX BUREAU
APPROVED AS A TAX MAP PURSUANT TO THE
PROVISIONS OF CHAPTER 175, LAWS OF 1913, ETC.
FOR THE DIRECTOR, DIVISION OF TAXATION
BY *J. H. Dumas* STATE SUPERVISOR
DATE OCT 27 1964 SERIAL NO. 418

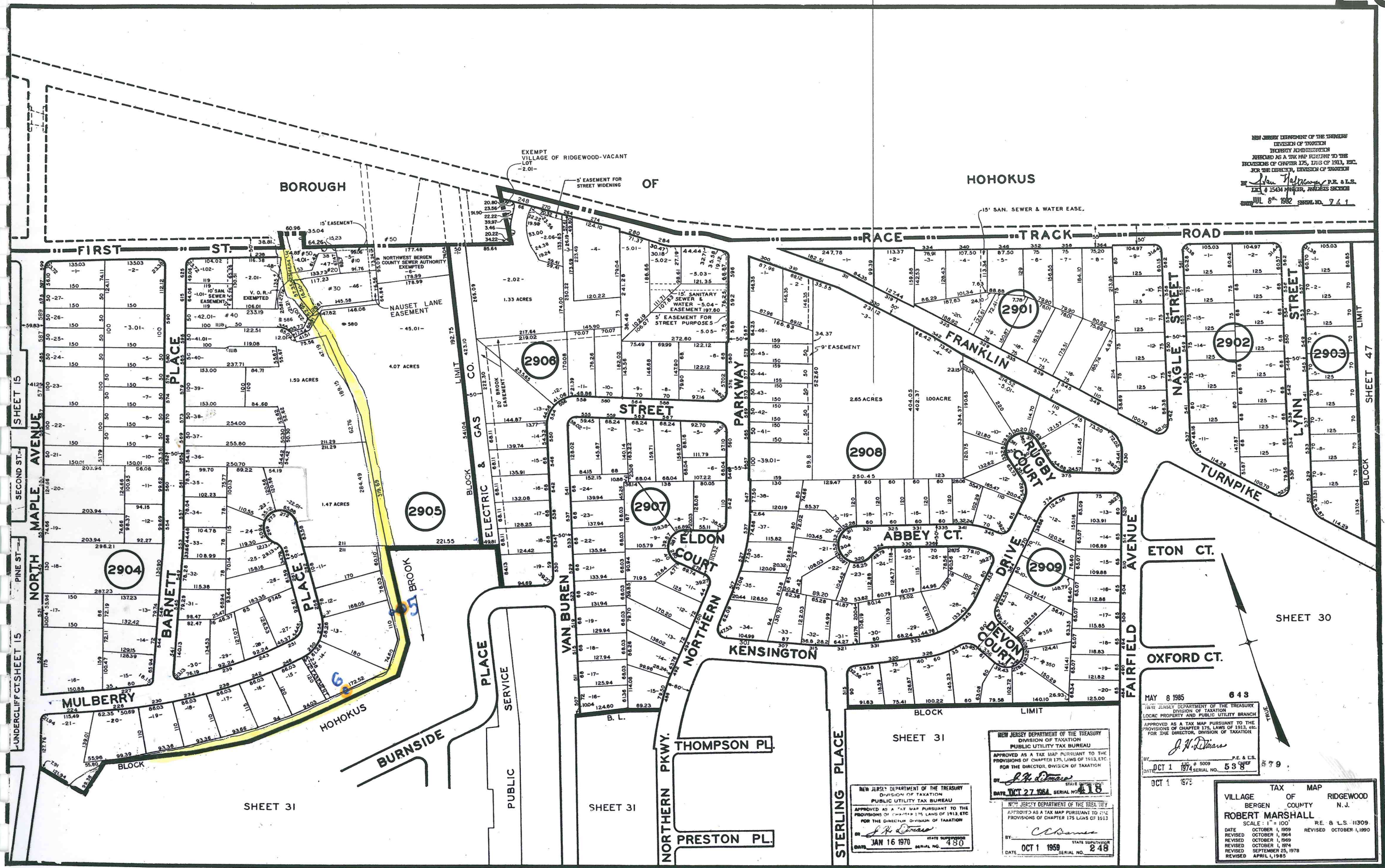
NEW JERSEY DEPARTMENT OF THE TREASURY
DIVISION OF TAXATION
PROPERTY ADMINISTRATION
APPROVED AS A TAX MAP PURSUANT TO THE
PROVISIONS OF CHAPTER 175, LAWS OF 1913, ETC.
FOR THE DIRECTOR, DIVISION OF TAXATION
BY *John Hoffmann* P.E. & L.S.
DATE JUL 8 1962 SERIAL NO. 711

MAY 8 1985 643
NEW JERSEY DEPARTMENT OF THE TREASURY
DIVISION OF TAXATION
LOCAL PROPERTY AND PUBLIC UTILITY BRANCH
APPROVED AS A TAX MAP PURSUANT TO THE
PROVISIONS OF CHAPTER 175, LAWS OF 1913, ETC.
FOR THE DIRECTOR, DIVISION OF TAXATION
BY *J. N. Dumas* P.E. & L.S.
DATE OCT 1 1974 SERIAL NO. 538
OCT 1 1978 579

NEW JERSEY DEPARTMENT OF THE TREASURY
DIVISION OF TAXATION
PUBLIC UTILITY TAX BUREAU
APPROVED AS A TAX MAP PURSUANT TO THE
PROVISIONS OF CHAPTER 175, LAWS OF 1913, ETC.
FOR THE DIRECTOR, DIVISION OF TAXATION
BY *J. H. Dumas* STATE SUPERVISOR
DATE JAN 16 1970 SERIAL NO. 480

NEW JERSEY DEPARTMENT OF THE TREASURY
DIVISION OF TAXATION
PUBLIC UTILITY TAX BUREAU
APPROVED AS A TAX MAP PURSUANT TO THE
PROVISIONS OF CHAPTER 175, LAWS OF 1913, ETC.
FOR THE DIRECTOR, DIVISION OF TAXATION
BY *C. Adams* STATE SUPERVISOR
DATE OCT 1 1959 SERIAL NO. 248

TAX MAP
VILLAGE OF RIDGEWOOD
BERGEN COUNTY N. J.
ROBERT MARSHALL
SCALE: 1" = 100' P.E. & L.S. 11309
DATE OCTOBER 1, 1959 REVISED OCTOBER 1, 1964
REVISED OCTOBER 1, 1969 REVISED OCTOBER 1, 1978
REVISED APRIL 1, 1985



NEW JERSEY DEPARTMENT OF THE TREASURY
 DIVISION OF TAXATION
 PROPERTY ACQUISITION
 APPROVED AS A TAX MAP PURSUANT TO THE
 PROVISIONS OF CHAPTER 175, LAWS OF 1913, ETC.
 FOR THE DIRECTOR, DIVISION OF TAXATION
 BY *J. H. Owens* P.E. & L.S.
 DATE OCT 1 1974 SERIAL NO. 538

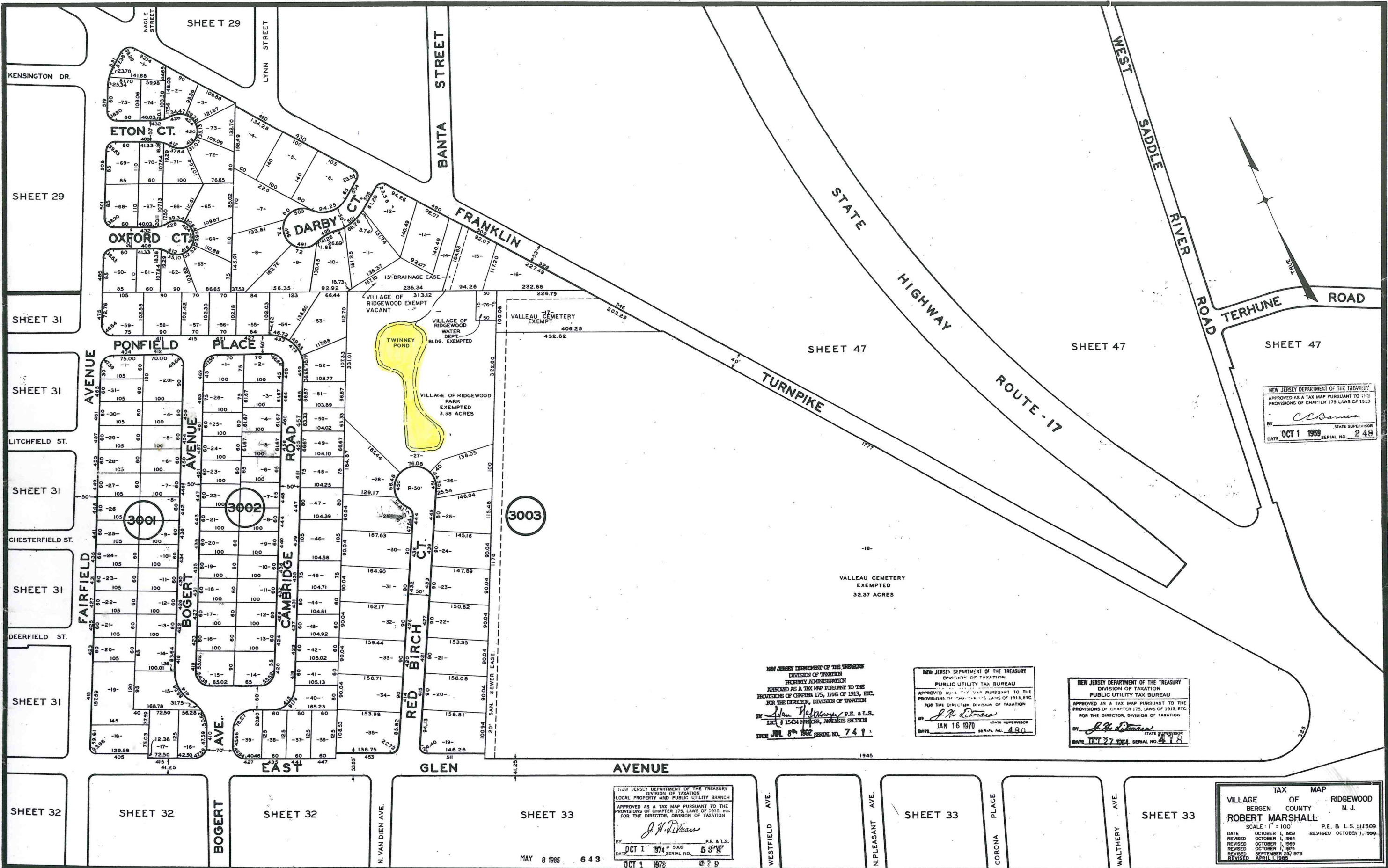
MAY 8 1985
 643
 NEW JERSEY DEPARTMENT OF THE TREASURY
 DIVISION OF TAXATION
 LOCAL PROPERTY AND PUBLIC UTILITY TAX BUREAU
 APPROVED AS A TAX MAP PURSUANT TO THE
 PROVISIONS OF CHAPTER 175, LAWS OF 1913, ETC.
 FOR THE DIRECTOR, DIVISION OF TAXATION
 BY *J. H. Owens* P.E. & L.S.
 DATE OCT 1 1974 SERIAL NO. 538

NEW JERSEY DEPARTMENT OF THE TREASURY
 DIVISION OF TAXATION
 PUBLIC UTILITY TAX BUREAU
 APPROVED AS A TAX MAP PURSUANT TO THE
 PROVISIONS OF CHAPTER 175, LAWS OF 1913, ETC.
 FOR THE DIRECTOR, DIVISION OF TAXATION
 BY *J. H. Owens* P.E. & L.S.
 DATE OCT 27 1964 SERIAL NO. 418

NEW JERSEY DEPARTMENT OF THE TREASURY
 DIVISION OF TAXATION
 PUBLIC UTILITY TAX BUREAU
 APPROVED AS A TAX MAP PURSUANT TO THE
 PROVISIONS OF CHAPTER 175, LAWS OF 1913, ETC.
 FOR THE DIRECTOR, DIVISION OF TAXATION
 BY *J. H. Owens* P.E. & L.S.
 DATE JAN 16 1970 SERIAL NO. 480

NEW JERSEY DEPARTMENT OF THE TREASURY
 DIVISION OF TAXATION
 PUBLIC UTILITY TAX BUREAU
 APPROVED AS A TAX MAP PURSUANT TO THE
 PROVISIONS OF CHAPTER 175, LAWS OF 1913, ETC.
 FOR THE DIRECTOR, DIVISION OF TAXATION
 BY *C. Owens* P.E. & L.S.
 DATE OCT 1 1959 SERIAL NO. 248

TAX MAP
 VILLAGE OF RIDGEWOOD
 BERGEN COUNTY N.J.
 ROBERT MARSHALL
 SCALE: 1" = 100'
 RE. & L.S. 11309
 DATE OCTOBER 1, 1959 REVISOR OCTOBER 1, 1969
 REVISOR OCTOBER 1, 1969 REVISOR OCTOBER 1, 1974
 REVISOR SEPTEMBER 25, 1978
 REVISOR APRIL 1, 1985



NEW JERSEY DEPARTMENT OF THE TREASURY
 APPROVED AS A TAX MAP PURSUANT TO THE
 PROVISIONS OF CHAPTER 175, LAWS OF 1912
 BY *C. J. ...* STATE SUPERVISOR
 DATE OCT 1 1959 SERIAL NO. 248

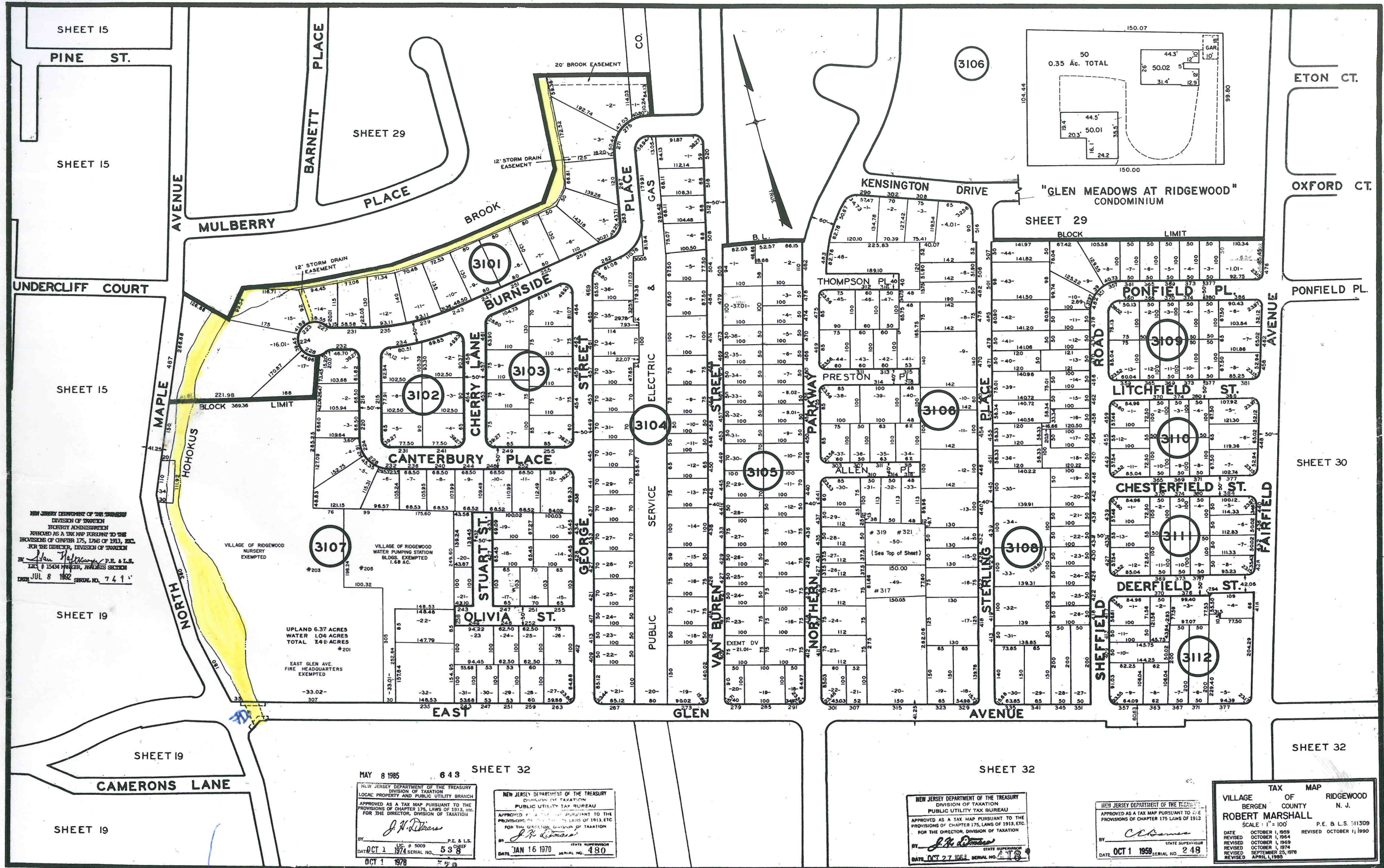
NEW JERSEY DEPARTMENT OF THE TREASURY
 DIVISION OF TAXATION
 RECORDS ADMINISTRATION
 APPROVED AS A TAX MAP PURSUANT TO THE
 PROVISIONS OF CHAPTER 175, LAWS OF 1912, ETC.
 FOR THE DIRECTOR, DIVISION OF TAXATION
 BY *Jan ...* P.E. & L.S.
 DATE JUL 8 1962 SERIAL NO. 749

NEW JERSEY DEPARTMENT OF THE TREASURY
 DIVISION OF TAXATION
 PUBLIC UTILITY TAX BUREAU
 APPROVED AS A TAX MAP PURSUANT TO THE
 PROVISIONS OF CHAPTER 175, LAWS OF 1912, ETC.
 FOR THE DIRECTOR, DIVISION OF TAXATION
 BY *J. R. ...*
 DATE JAN 16 1970 SERIAL NO. 480

NEW JERSEY DEPARTMENT OF THE TREASURY
 DIVISION OF TAXATION
 PUBLIC UTILITY TAX BUREAU
 APPROVED AS A TAX MAP PURSUANT TO THE
 PROVISIONS OF CHAPTER 175, LAWS OF 1912, ETC.
 FOR THE DIRECTOR, DIVISION OF TAXATION
 BY *J. R. ...*
 DATE OCT 27 1964 SERIAL NO. 418

NEW JERSEY DEPARTMENT OF THE TREASURY
 DIVISION OF TAXATION
 LOCAL PROPERTY AND PUBLIC UTILITY BRANCH
 APPROVED AS A TAX MAP PURSUANT TO THE
 PROVISIONS OF CHAPTER 175, LAWS OF 1912, ETC.
 FOR THE DIRECTOR, DIVISION OF TAXATION
 BY *J. N. ...*
 DATE OCT 1 1974 SERIAL NO. 538

TAX MAP
 VILLAGE OF RIDGEWOOD
 BERGEN COUNTY N. J.
 ROBERT MARSHALL
 SCALE: 1" = 100'
 DATE OCTOBER 1, 1959
 REVISED OCTOBER 1, 1964
 REVISED OCTOBER 1, 1969
 REVISED OCTOBER 1, 1974
 REVISED SEPTEMBER 25, 1978
 REVISED APRIL 1, 1985
 P.E. & L.S. 311309
 REVISED OCTOBER 1, 1990



NEW JERSEY DEPARTMENT OF THE TREASURY
 DIVISION OF TAXATION
 PROPERTY ADMINISTRATION
 APPROVED AS A TAX MAP PURSUANT TO THE
 PROVISIONS OF CHAPTER 175, LAWS OF 1913, ETC.
 FOR THE DIRECTOR, DIVISION OF TAXATION
 BY *John H. Deane*, P.E. & L.S.
 LIC. # 15434 MANAGER, ANALYSIS SECTION
 DATE JUL 8 1992 SERIAL NO. 7411

VILLAGE OF RIDGEWOOD
 NURSERY EXEMPTED

VILLAGE OF RIDGEWOOD
 WATER PUMPING STATION
 BLDGS. EXEMPTED
 1.68 AC.

UPLAND 6.37 ACRES
 WATER 1.04 ACRES
 TOTAL 7.41 ACRES

EAST GLEN AVE.
 FIRE HEADQUARTERS
 EXEMPTED

MAY 8 1985 643 SHEET 32
 NEW JERSEY DEPARTMENT OF THE TREASURY
 DIVISION OF TAXATION
 LOCAL PROPERTY AND PUBLIC UTILITY BRANCH
 APPROVED AS A TAX MAP PURSUANT TO THE
 PROVISIONS OF CHAPTER 175, LAWS OF 1913, ETC.
 FOR THE DIRECTOR, DIVISION OF TAXATION
 BY *J. H. Deane*
 P.E. & L.S.
 LIC. # 5009
 DATE OCT 1 1978 SERIAL NO. 538

NEW JERSEY DEPARTMENT OF THE TREASURY
 DIVISION OF TAXATION
 PUBLIC UTILITY TAX BUREAU
 APPROVED AS A TAX MAP PURSUANT TO THE
 PROVISIONS OF CHAPTER 175, LAWS OF 1913, ETC.
 FOR THE DIRECTOR, DIVISION OF TAXATION
 BY *J. H. Deane*
 STATE SUPERVISOR
 DATE JAN 16 1970 SERIAL NO. 480

NEW JERSEY DEPARTMENT OF THE TREASURY
 DIVISION OF TAXATION
 PUBLIC UTILITY TAX BUREAU
 APPROVED AS A TAX MAP PURSUANT TO THE
 PROVISIONS OF CHAPTER 175, LAWS OF 1913, ETC.
 FOR THE DIRECTOR, DIVISION OF TAXATION
 BY *J. H. Deane*
 STATE SUPERVISOR
 DATE OCT 27 1982 SERIAL NO. 118

NEW JERSEY DEPARTMENT OF THE TREASURY
 DIVISION OF TAXATION
 PUBLIC UTILITY TAX BUREAU
 APPROVED AS A TAX MAP PURSUANT TO THE
 PROVISIONS OF CHAPTER 175, LAWS OF 1913, ETC.
 FOR THE DIRECTOR, DIVISION OF TAXATION
 BY *C. Deane*
 STATE SUPERVISOR
 DATE OCT 1 1959 SERIAL NO. 249

TAX MAP
 VILLAGE OF RIDGEWOOD
 BERGEN COUNTY N. J.
 ROBERT MARSHALL
 SCALE: 1" = 100' P.E. & L.S. 311309
 DATE OCTOBER 1, 1959 REVISED OCTOBER 1, 1959
 REVISION OCTOBER 1, 1959
 REVISION OCTOBER 1, 1974
 REVISION SEPTEMBER 25, 1978
 REVISION APRIL 1, 1985