

NEW JERSEY DEPARTMENT OF THE TREASURY  
 DIVISION OF TAXATION  
 PUBLIC UTILITY TAX BUREAU  
 APPROVED AS A TAX MAP PURSUANT TO THE  
 PROVISIONS OF CHAPTER 175, LAWS OF 1913, ETC.  
 FOR THE DIRECTOR, DIVISION OF TAXATION  
 BY: *[Signature]*  
 DATE: OCT 27 1959 SERIAL NO. 249

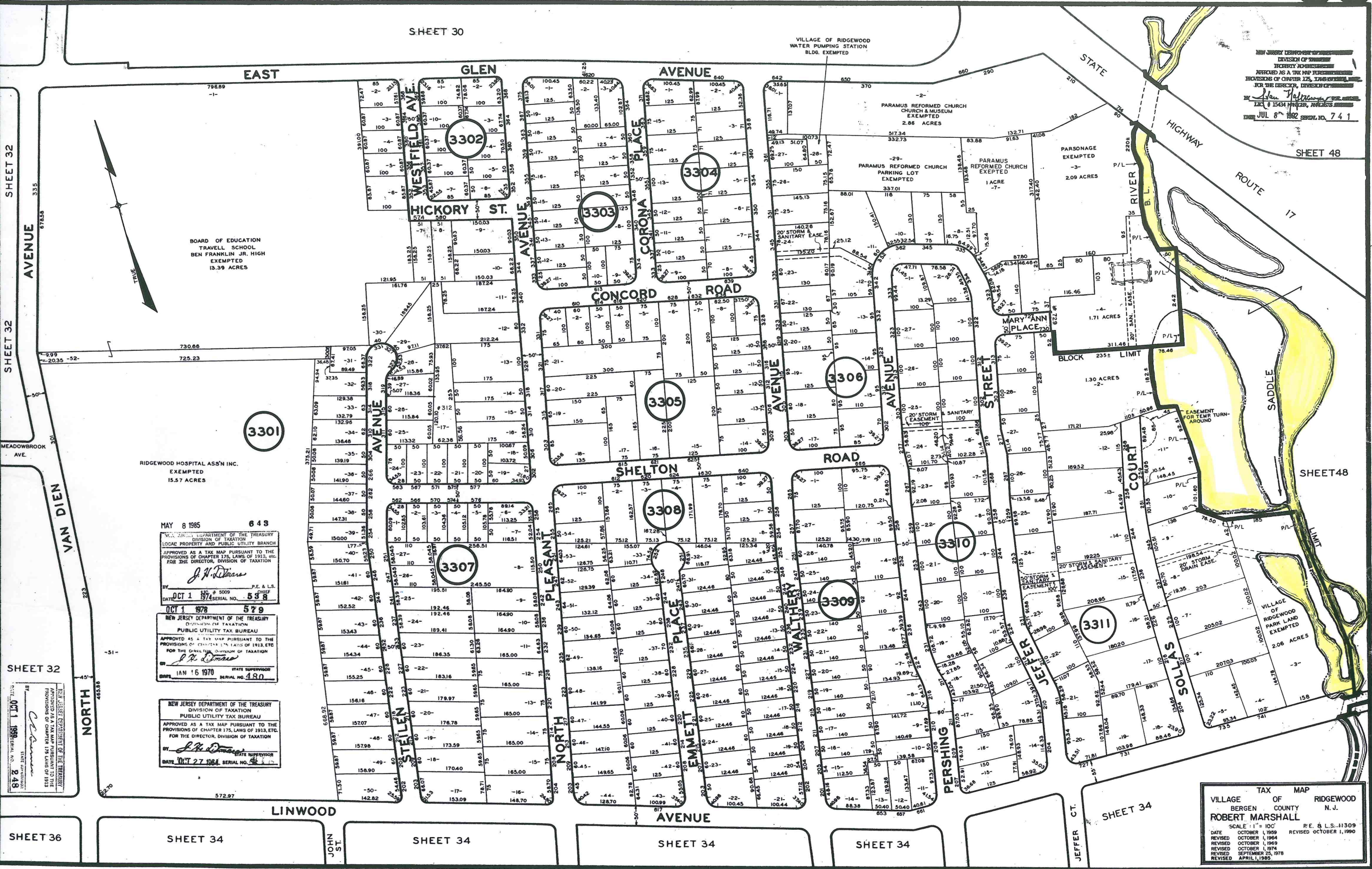
NEW JERSEY DEPARTMENT OF THE TREASURY  
 DIVISION OF TAXATION  
 PUBLIC UTILITY TAX BUREAU  
 APPROVED AS A TAX MAP PURSUANT TO THE  
 PROVISIONS OF CHAPTER 175, LAWS OF 1913, ETC.  
 FOR THE DIRECTOR, DIVISION OF TAXATION  
 BY: *[Signature]*  
 DATE: JAN 16 1970 SERIAL NO. 480

NEW JERSEY DEPARTMENT OF THE TREASURY  
 DIVISION OF TAXATION  
 LOCAL PROPERTY AND PUBLIC UTILITY BRANCH  
 APPROVED AS A TAX MAP PURSUANT TO THE  
 PROVISIONS OF CHAPTER 175, LAWS OF 1913, ETC.  
 FOR THE DIRECTOR, DIVISION OF TAXATION  
 BY: *[Signature]*  
 DATE: OCT 1 1974 SERIAL NO. 538

VILLAGE TAX MAP  
 OF  
 RIDGEWOOD  
 COUNTY N. J.  
 ROBERT MARSHALL  
 SCALE: 1" = 100'  
 DATE: OCTOBER 1, 1959 P.E. & L.S. 11309  
 REVISED: OCTOBER 1, 1964 REVISED: OCTOBER 1, 1990  
 REVISED: OCTOBER 1, 1969  
 REVISED: OCTOBER 1, 1974  
 REVISED: SEPTEMBER 25, 1976  
 REVISED: APRIL 1, 1985

NEW JERSEY DEPARTMENT OF THE TREASURY  
 DIVISION OF TAXATION  
 LOCAL PROPERTY AND PUBLIC UTILITY BRANCH  
 APPROVED AS A TAX MAP PURSUANT TO THE  
 PROVISIONS OF CHAPTER 175, LAWS OF 1913, ETC.  
 FOR THE DIRECTOR, DIVISION OF TAXATION  
 BY: *[Signature]*  
 DATE: OCT 1 1959 SERIAL NO. 249

NEW JERSEY DEPARTMENT OF THE TREASURY  
 DIVISION OF TAXATION  
 LOCAL PROPERTY AND PUBLIC UTILITY BRANCH  
 APPROVED AS A TAX MAP PURSUANT TO THE  
 PROVISIONS OF CHAPTER 175, LAWS OF 1913, ETC.  
 FOR THE DIRECTOR, DIVISION OF TAXATION  
 BY: *[Signature]*  
 DATE: OCT 1 1959 SERIAL NO. 249



SHEET 30

NEW JERSEY DEPARTMENT OF THE TREASURY  
DIVISION OF TAXATION  
PROPERTY ADMINISTRATION  
APPROVED AS A TAX MAP PURSUANT TO THE  
PROVISIONS OF CHAPTER 175, LAWS OF 1913, ETC.  
FOR THE DIRECTOR, DIVISION OF TAXATION  
*J. N. ...*  
DATE JUL 8 1982 SERIAL NO. 741

BOARD OF EDUCATION  
TRAVELL SCHOOL  
BEN FRANKLIN JR. HIGH  
EXEMPTED  
13.39 ACRES

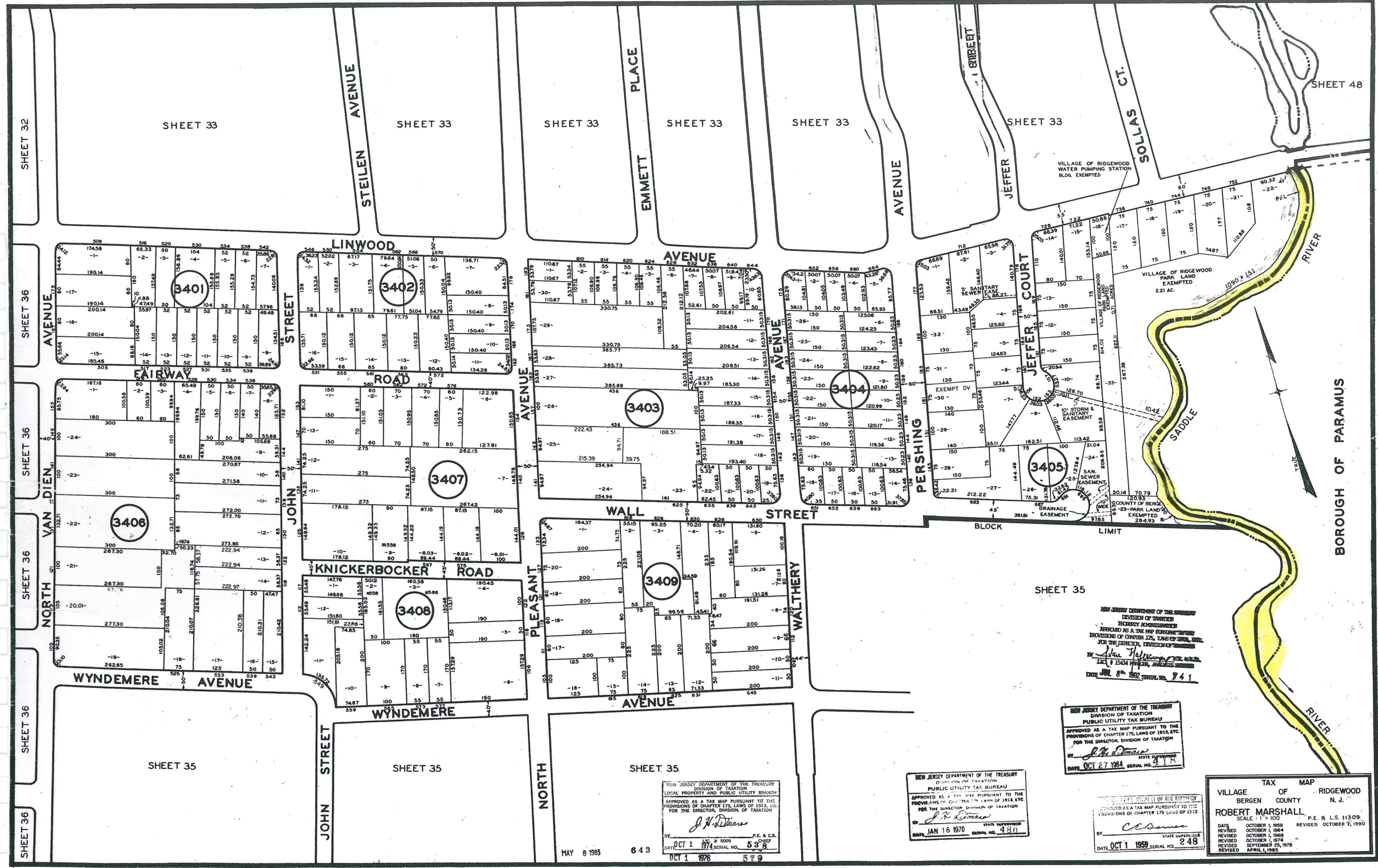
RIDGEWOOD HOSPITAL ASS'N INC.  
EXEMPTED  
15.57 ACRES

MAY 8 1985 643  
NEW JERSEY DEPARTMENT OF THE TREASURY  
DIVISION OF TAXATION  
LOCAL PROPERTY AND PUBLIC UTILITY BRANCH  
APPROVED AS A TAX MAP PURSUANT TO THE  
PROVISIONS OF CHAPTER 175, LAWS OF 1913, ETC.  
FOR THE DIRECTOR, DIVISION OF TAXATION  
*J. N. ...*  
DATE OCT 1 1974 SERIAL NO. 538

OCT 1 1978 579  
NEW JERSEY DEPARTMENT OF THE TREASURY  
DIVISION OF TAXATION  
PUBLIC UTILITY TAX BUREAU  
APPROVED AS A TAX MAP PURSUANT TO THE  
PROVISIONS OF CHAPTER 175, LAWS OF 1913, ETC.  
FOR THE DIRECTOR, DIVISION OF TAXATION  
*J. N. ...*  
DATE JAN 16 1970 SERIAL NO. 480

NEW JERSEY DEPARTMENT OF THE TREASURY  
DIVISION OF TAXATION  
PUBLIC UTILITY TAX BUREAU  
APPROVED AS A TAX MAP PURSUANT TO THE  
PROVISIONS OF CHAPTER 175, LAWS OF 1913, ETC.  
FOR THE DIRECTOR, DIVISION OF TAXATION  
*J. N. ...*  
DATE OCT 27 1984 SERIAL NO. ...

TAX MAP  
VILLAGE OF RIDGEWOOD  
BERGEN COUNTY N. J.  
ROBERT MARSHALL  
SCALE: 1" = 100' P.E. & L.S. 11309  
DATE OCTOBER 1, 1959 REVISED OCTOBER 1, 1969  
REVISED OCTOBER 1, 1969 REVISED OCTOBER 1, 1974  
REVISED SEPTEMBER 25, 1978  
REVISED APRIL 1, 1985



NEW JERSEY DEPARTMENT OF THE TREASURY  
 DIVISION OF TAXATION  
 PUBLIC UTILITY TAX BUREAU  
 APPROVED AS A TAX MAP PURSUANT TO THE  
 PROVISIONS OF CHAPTER 175, LAWS OF 1913, ETC.  
 FOR THE DIRECTOR, DIVISION OF TAXATION  
*J. H. Deans*  
 DATE: JUL 8 1962 SERIAL NO. 741

NEW JERSEY DEPARTMENT OF THE TREASURY  
 DIVISION OF TAXATION  
 PUBLIC UTILITY TAX BUREAU  
 APPROVED AS A TAX MAP PURSUANT TO THE  
 PROVISIONS OF CHAPTER 175, LAWS OF 1913, ETC.  
 FOR THE DIRECTOR, DIVISION OF TAXATION  
*J. H. Deans*  
 DATE: OCT 27 1964 SERIAL NO. 418

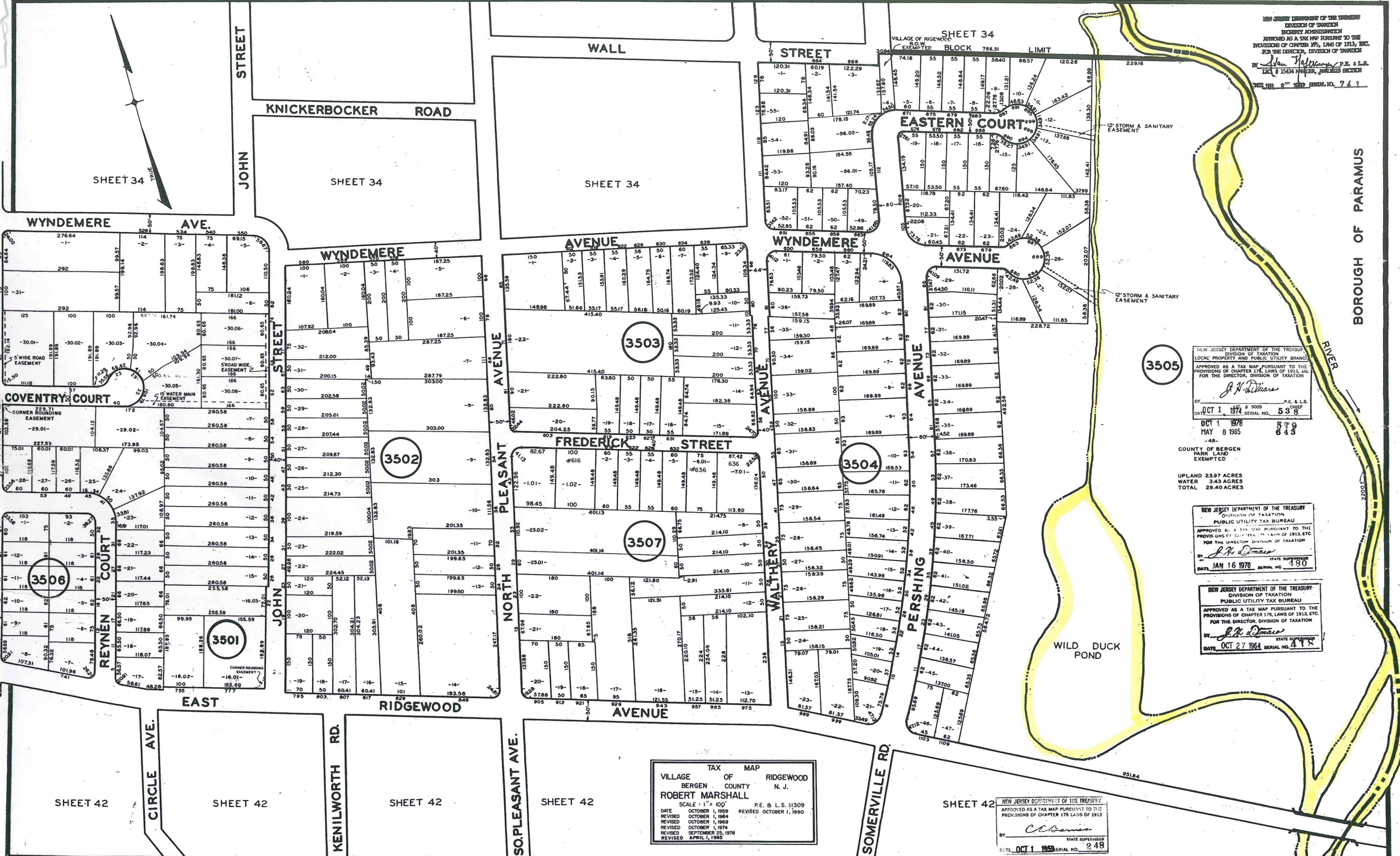
NEW JERSEY DEPARTMENT OF THE TREASURY  
 DIVISION OF TAXATION  
 PUBLIC UTILITY TAX BUREAU  
 APPROVED AS A TAX MAP PURSUANT TO THE  
 PROVISIONS OF CHAPTER 175, LAWS OF 1913, ETC.  
 FOR THE DIRECTOR, DIVISION OF TAXATION  
*C. B. Berman*  
 DATE: OCT 1 1959 SERIAL NO. 248

TAX MAP  
 VILLAGE OF RIDGEWOOD  
 BERGEN COUNTY N. J.  
 ROBERT MARSHALL  
 SCALE: 1" = 100' P.E. & L.S. 113.09  
 DATE: OCTOBER 1, 1959 REVISION: OCTOBER 1, 1960  
 DATE: OCTOBER 1, 1964 REVISION: OCTOBER 1, 1969  
 DATE: OCTOBER 1, 1974 REVISION: SEPTEMBER 25, 1978  
 DATE: APRIL 1, 1985

NEW JERSEY DEPARTMENT OF THE TREASURY  
 DIVISION OF TAXATION  
 LOCAL PROPERTY AND PUBLIC UTILITY BRANCH  
 APPROVED AS A TAX MAP PURSUANT TO THE  
 PROVISIONS OF CHAPTER 175, LAWS OF 1913, ETC.  
 FOR THE DIRECTOR, DIVISION OF TAXATION  
*J. H. Deans*  
 DATE: OCT 1 1974 SERIAL NO. 538  
 P.E. & L.S. CHIEF

NEW JERSEY DEPARTMENT OF THE TREASURY  
 DIVISION OF TAXATION  
 PUBLIC UTILITY TAX BUREAU  
 APPROVED AS A TAX MAP PURSUANT TO THE  
 PROVISIONS OF CHAPTER 175, LAWS OF 1913, ETC.  
 FOR THE DIRECTOR, DIVISION OF TAXATION  
*J. H. Deans*  
 DATE: JAN 16 1970 SERIAL NO. 480

MAY 8 1985 643 OCT 1 1976 579



NEW JERSEY DEPARTMENT OF THE TREASURY  
 DIVISION OF TAXATION  
 APPROVED AS A TAX MAP PURSUANT TO THE  
 PROVISIONS OF CHAPTER 175, LAWS OF 1913, ETC.  
 FOR THE DIRECTOR, DIVISION OF TAXATION  
 BY *Van H. Williams* P.E. & L.S.  
 DATE OCT 1 1974 SERIAL NO. 538

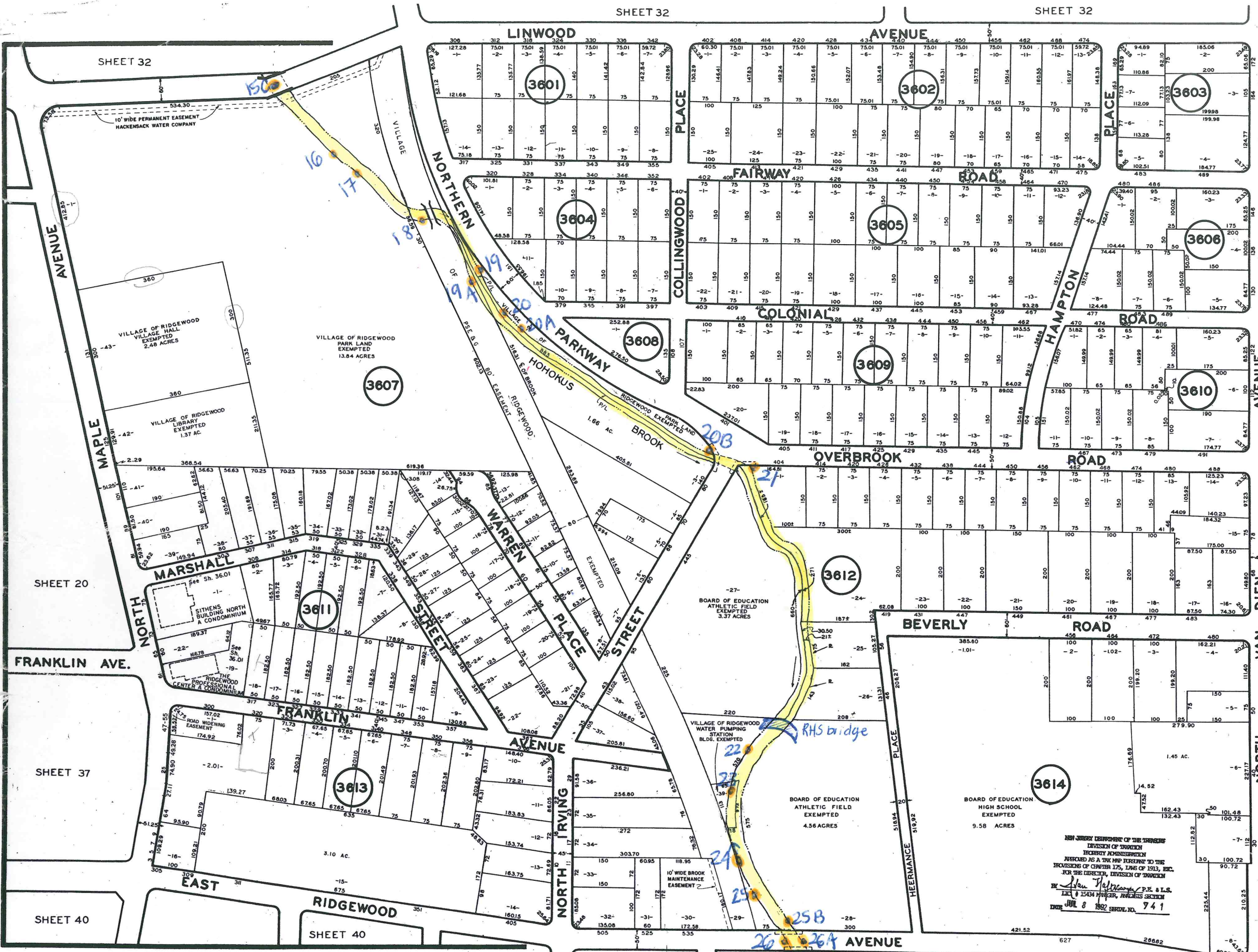
NEW JERSEY DEPARTMENT OF THE TREASURY  
 DIVISION OF TAXATION  
 LOCAL PROPERTY AND PUBLIC UTILITY TAX BUREAU  
 APPROVED AS A TAX MAP PURSUANT TO THE  
 PROVISIONS OF CHAPTER 175, LAWS OF 1913, ETC.  
 FOR THE DIRECTOR, DIVISION OF TAXATION  
 BY *J. N. Williams* P.E. & L.S.  
 DATE OCT 1 1974 SERIAL NO. 538  
 OCT 1 1974  
 MAY 8 1985  
 COUNTY OF BERGEN  
 PARK LAND  
 EXEMPTED  
 UPLAND 2597 ACRES  
 WATER 343 ACRES  
 TOTAL 2940 ACRES

NEW JERSEY DEPARTMENT OF THE TREASURY  
 DIVISION OF TAXATION  
 PUBLIC UTILITY TAX BUREAU  
 APPROVED AS A TAX MAP PURSUANT TO THE  
 PROVISIONS OF CHAPTER 175, LAWS OF 1913, ETC.  
 FOR THE DIRECTOR, DIVISION OF TAXATION  
 BY *J. N. Williams* P.E. & L.S.  
 DATE JAN 16 1970 SERIAL NO. 480

NEW JERSEY DEPARTMENT OF THE TREASURY  
 DIVISION OF TAXATION  
 PUBLIC UTILITY TAX BUREAU  
 APPROVED AS A TAX MAP PURSUANT TO THE  
 PROVISIONS OF CHAPTER 175, LAWS OF 1913, ETC.  
 FOR THE DIRECTOR, DIVISION OF TAXATION  
 BY *J. N. Williams* P.E. & L.S.  
 DATE OCT 27 1964 SERIAL NO. 478

VILLAGE OF RIDGEWOOD  
 BERGEN COUNTY N. J.  
 TAX MAP  
 ROBERT MARSHALL  
 SCALE 1" = 100' P.E. & L.S. 11309  
 DATE OCTOBER 1, 1969 REVISED OCTOBER 1, 1990  
 REVISED OCTOBER 1, 1964  
 REVISED OCTOBER 1, 1969  
 REVISED OCTOBER 1, 1974  
 REVISED SEPTEMBER 25, 1978  
 REVISED APRIL 1, 1985

NEW JERSEY DEPARTMENT OF THE TREASURY  
 DIVISION OF TAXATION  
 APPROVED AS A TAX MAP PURSUANT TO THE  
 PROVISIONS OF CHAPTER 175, LAWS OF 1913  
 BY *C. Adams* P.E. & L.S.  
 DATE OCT 1 1958 SERIAL NO. 248



SHEET 34

NEW JERSEY DEPARTMENT OF THE TREASURY  
DIVISION OF TAXATION  
PUBLIC UTILITY TAX BUREAU  
APPROVED AS A TAX MAP PURSUANT TO THE PROVISIONS OF CHAPTER 175, LAWS OF 1913, ETC. FOR THE DIRECTOR, DIVISION OF TAXATION  
BY *J. H. Doman* STATE SUPERVISOR  
DATE JAN 16 1970 SERIAL NO. 489

SHEET 34

NEW JERSEY DEPARTMENT OF THE TREASURY  
DIVISION OF TAXATION  
LOCAL PROPERTY AND PUBLIC UTILITY TAX BRANCH  
APPROVED AS A TAX MAP PURSUANT TO THE PROVISIONS OF CHAPTER 175, LAWS OF 1913, ETC. FOR THE DIRECTOR, DIVISION OF TAXATION  
BY *J. W. Williams* P.E. & L.S.  
DATE OCT 1 1978 SERIAL NO. 538

NEW JERSEY DEPARTMENT OF THE TREASURY  
DIVISION OF TAXATION  
PUBLIC UTILITY TAX BUREAU  
APPROVED AS A TAX MAP PURSUANT TO THE PROVISIONS OF CHAPTER 175, LAWS OF 1913, ETC. FOR THE DIRECTOR, DIVISION OF TAXATION  
BY *J. H. Doman* STATE SUPERVISOR  
DATE OCT 27 1954 SERIAL NO. 418

WYNDEMERE AVE.  
MAY 8 1985 643

SHEET 35

COVENTRY CT.

REYNECT CT.

NEW JERSEY DEPARTMENT OF THE TREASURY  
DIVISION OF TAXATION  
APPROVED AS A TAX MAP PURSUANT TO THE PROVISIONS OF CHAPTER 175, LAWS OF 1913  
BY *C. Doman* STATE SUPERVISOR  
DATE OCT 1 1959 SERIAL NO. 248

TAX MAP

VILLAGE OF RIDGEWOOD  
BERGEN COUNTY N. J.  
ROBERT MARSHALL  
SCALE: 1" = 100' P.E. & L.S. 11309  
DATE OCTOBER 1, 1959 REVISED OCTOBER 1, 1964  
REVISED OCTOBER 1, 1969  
REVISED OCTOBER 1, 1974  
REVISED SEPTEMBER 25, 1978  
REVISED APRIL 1, 1985

SHEET 20

SHEET 37

SHEET 40

NEW JERSEY DEPARTMENT OF THE TREASURY  
DIVISION OF TAXATION

APPROVED AS A TAX MAP PURSUANT TO THE PROVISIONS OF CHAPTER 175, LAWS OF 1913, ETC. FOR THE DIRECTOR, DIVISION OF TAXATION  
BY *J. N. Deane* P.E. & L.S.  
DATE: **OCT 1 1978** SERIAL NO. **741**

SHEET 37

DAYTON

NEW JERSEY DEPARTMENT OF THE TREASURY  
DIVISION OF TAXATION  
LOCAL PROPERTY AND PUBLIC UTILITY TAX BRANCH  
APPROVED AS A TAX MAP PURSUANT TO THE PROVISIONS OF CHAPTER 175, LAWS OF 1913, ETC. FOR THE DIRECTOR, DIVISION OF TAXATION  
BY *J. N. Deane* P.E. & L.S.  
DATE: **OCT 1 1978** SERIAL NO. **538**

WALTON ST.

DEDICATED TO THE COUNTY OF BERGEN AS A R.O.W. FOR ROAD WIDENING PURPOSES

MASONIC ASSOCIATION EXEMPTED

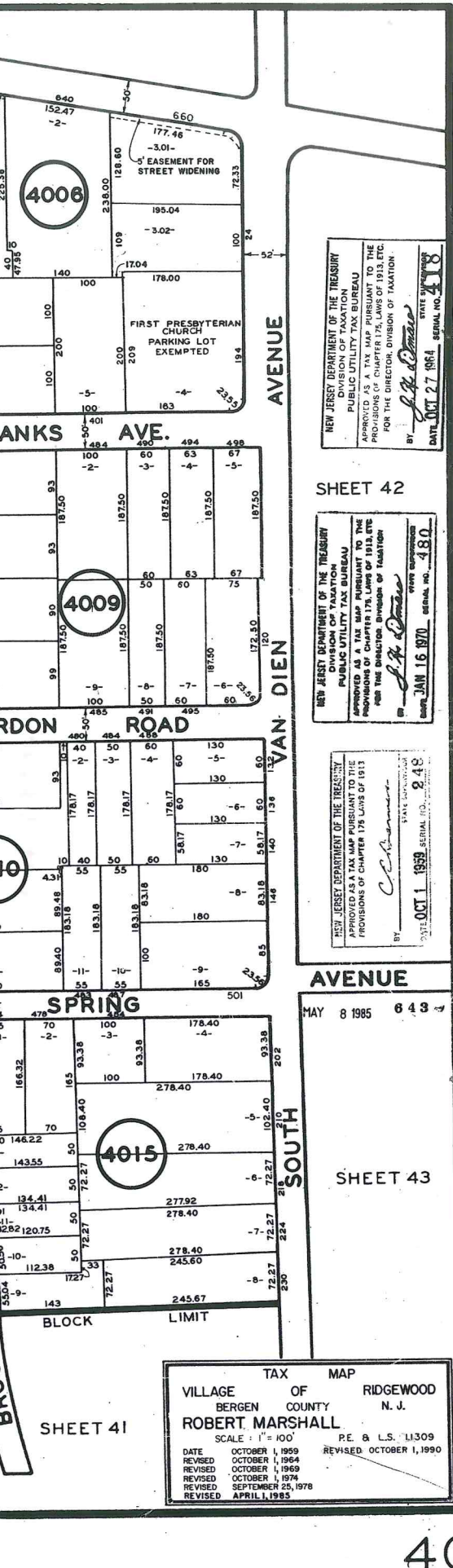
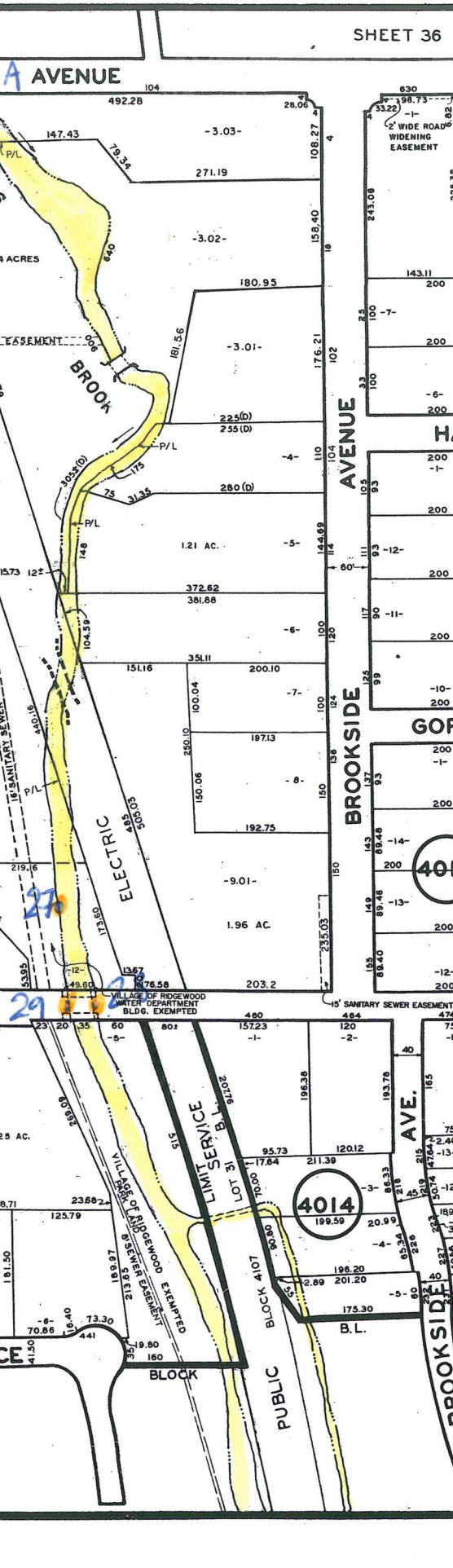
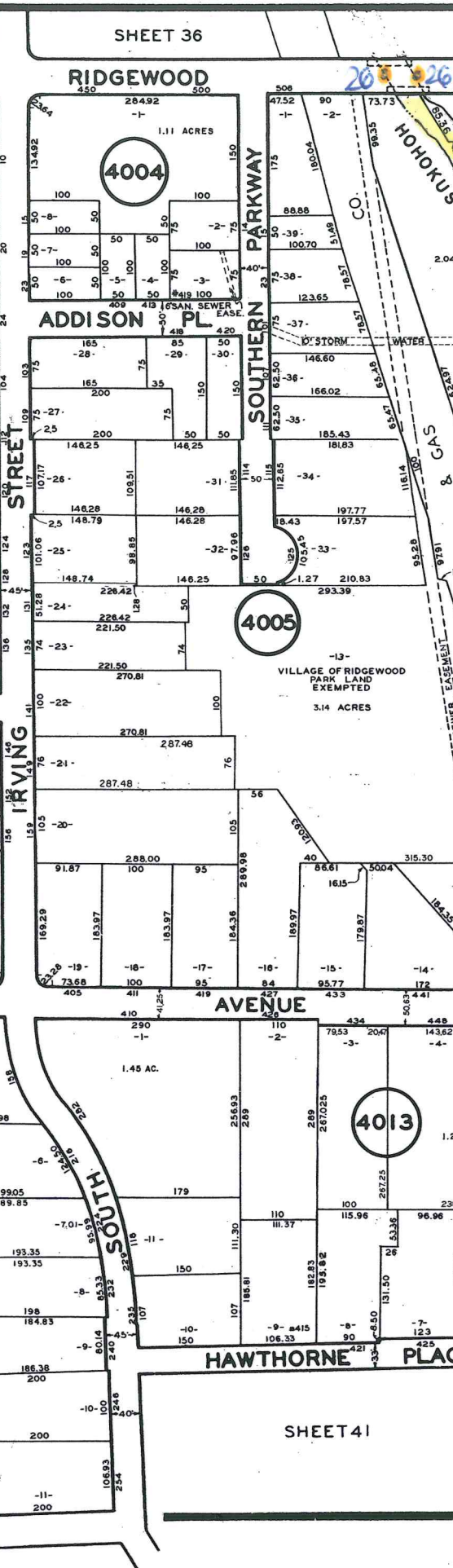
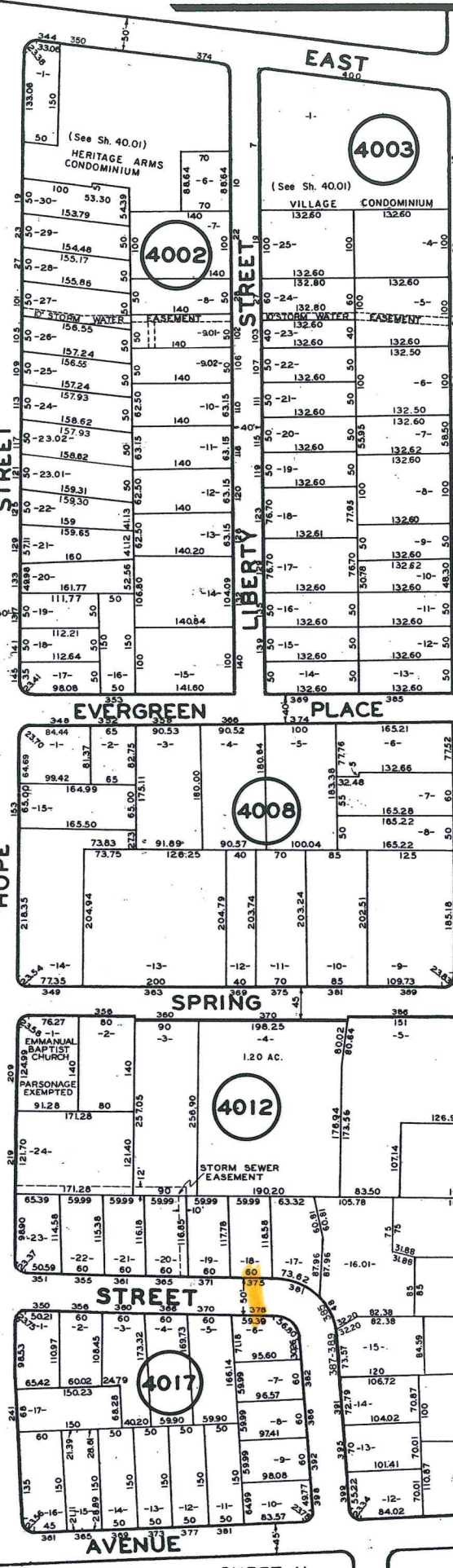
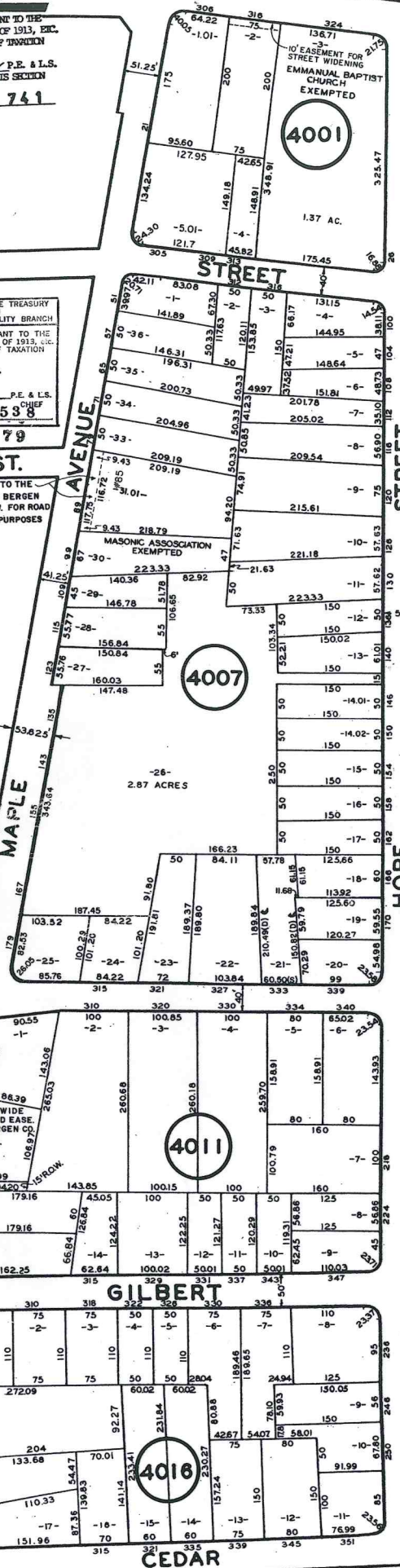
SHEET 37

UNION ST.

SHEET 39

PROSPECT

SHEET 41



SHEET 36

SHEET 36

RIDGEWOOD

20 26A AVENUE

HOHOKUS

CO. & CAS

BROOK

SOUTHERN PARKWAY

ADDISON PL

LIBERTY STREET

HOPE STREET

EVERGREEN PLACE

IRVING STREET

SPRING AVENUE

HAWTHORNE PLACE

BL

AVENUE

AVENUE

AVENUE

AVENUE

AVENUE

AVENUE

AVENUE

AVENUE

AVENUE

AVENUE

AVENUE

AVENUE

AVENUE

AVENUE

AVENUE

AVENUE

AVENUE

AVENUE

AVENUE

AVENUE

AVENUE

AVENUE

AVENUE

AVENUE

AVENUE

AVENUE

AVENUE

AVENUE

AVENUE

AVENUE

AVENUE

TAX MAP  
VILLAGE OF RIDGEWOOD  
BERGEN COUNTY N.J.  
ROBERT MARSHALL  
SCALE: 1" = 100'  
DATE: OCTOBER 1, 1959  
REVISED: OCTOBER 1, 1964  
REVISED: OCTOBER 1, 1969  
REVISED: OCTOBER 1, 1974  
REVISED: SEPTEMBER 25, 1978  
REVISED: APRIL 1, 1985

NEW JERSEY DEPARTMENT OF THE TREASURY  
DIVISION OF TAXATION  
PUBLIC UTILITY TAX BUREAU  
APPROVED AS A TAX MAP PURSUANT TO THE PROVISIONS OF CHAPTER 175, LAWS OF 1913, ETC. FOR THE DIRECTOR, DIVISION OF TAXATION  
BY *J. N. Deane* P.E. & L.S.  
DATE: **OCT 27 1984** SERIAL NO. **418**

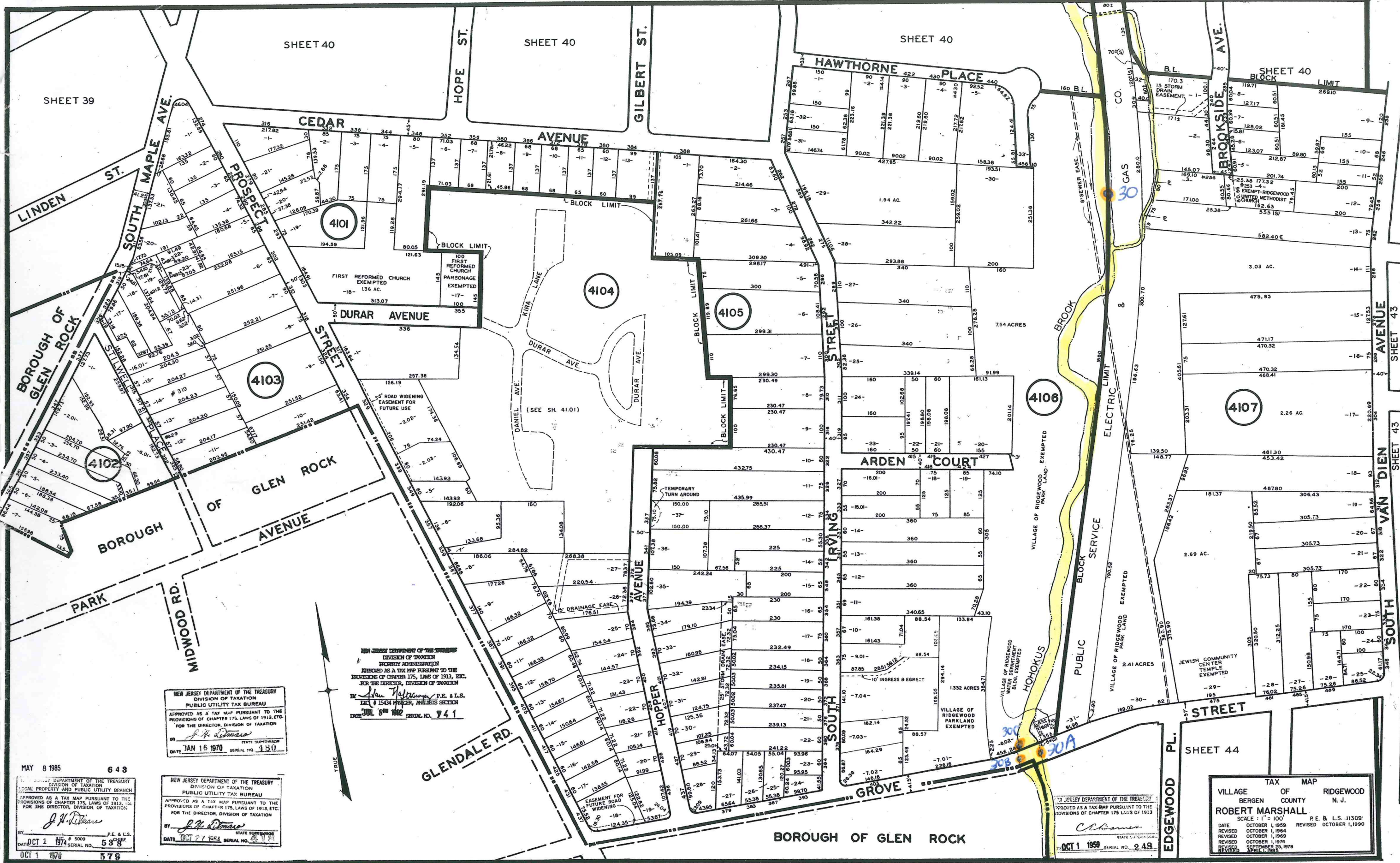
SHEET 42  
NEW JERSEY DEPARTMENT OF THE TREASURY  
DIVISION OF TAXATION  
PUBLIC UTILITY TAX BUREAU  
APPROVED AS A TAX MAP PURSUANT TO THE PROVISIONS OF CHAPTER 175, LAWS OF 1913, ETC. FOR THE DIRECTOR, DIVISION OF TAXATION  
BY *J. N. Deane* P.E. & L.S.  
DATE: **JAN 16 1970** SERIAL NO. **480**

NEW JERSEY DEPARTMENT OF THE TREASURY  
DIVISION OF TAXATION  
PUBLIC UTILITY TAX BUREAU  
APPROVED AS A TAX MAP PURSUANT TO THE PROVISIONS OF CHAPTER 175, LAWS OF 1913, ETC. FOR THE DIRECTOR, DIVISION OF TAXATION  
BY *J. N. Deane* P.E. & L.S.  
DATE: **OCT 1 1959** SERIAL NO. **945**

AVENUE

MAY 8 1985 6 43

SHEET 43



NEW JERSEY DEPARTMENT OF THE TREASURY  
 DIVISION OF TAXATION  
 PUBLIC UTILITY TAX BUREAU  
 APPROVED AS A TAX MAP PURSUANT TO THE  
 PROVISIONS OF CHAPTER 175, LAWS OF 1913, ETC.  
 FOR THE DIRECTOR, DIVISION OF TAXATION  
 BY *J. H. Romano* P.E. & L.S.  
 DATE JAN 15 1970 SERIAL NO. 430

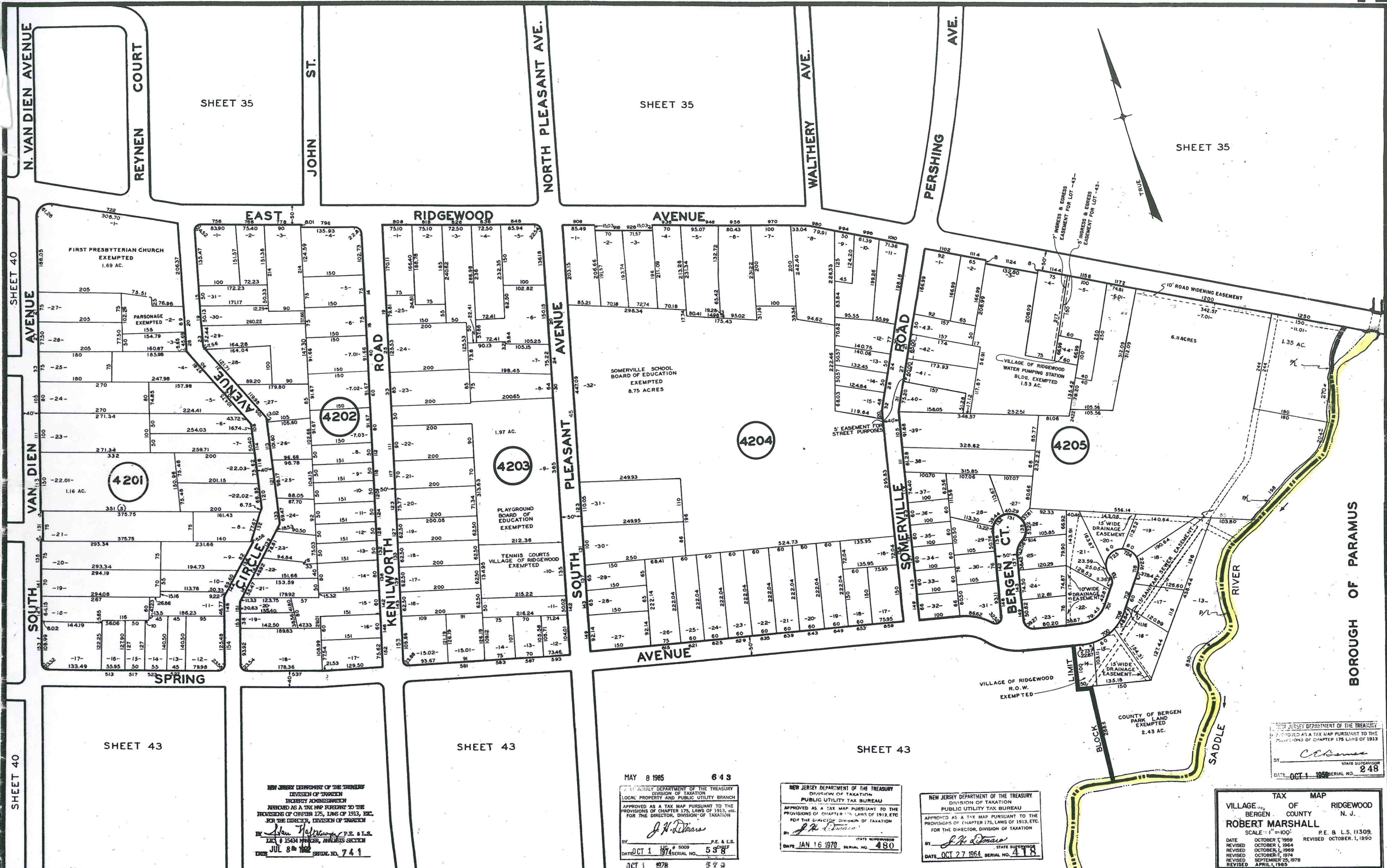
NEW JERSEY DEPARTMENT OF THE TREASURY  
 DIVISION OF TAXATION  
 PUBLIC UTILITY TAX BUREAU  
 APPROVED AS A TAX MAP PURSUANT TO THE  
 PROVISIONS OF CHAPTER 175, LAWS OF 1913, ETC.  
 FOR THE DIRECTOR, DIVISION OF TAXATION  
 BY *John Pappalardo* P.E. & L.S.  
 DATE OCT 1 1977 SERIAL NO. 741

NEW JERSEY DEPARTMENT OF THE TREASURY  
 DIVISION OF TAXATION  
 PUBLIC UTILITY TAX BUREAU  
 APPROVED AS A TAX MAP PURSUANT TO THE  
 PROVISIONS OF CHAPTER 175, LAWS OF 1913, ETC.  
 FOR THE DIRECTOR, DIVISION OF TAXATION  
 BY *J. H. Romano* P.E. & L.S.  
 DATE OCT 27 1974 SERIAL NO. 478

MAY 8 1985 643  
 NEW JERSEY DEPARTMENT OF THE TREASURY  
 DIVISION OF TAXATION  
 LOCAL PROPERTY AND PUBLIC UTILITY BRANCH  
 APPROVED AS A TAX MAP PURSUANT TO THE  
 PROVISIONS OF CHAPTER 175, LAWS OF 1913, ETC.  
 FOR THE DIRECTOR, DIVISION OF TAXATION  
 BY *J. H. Romano* P.E. & L.S.  
 DATE OCT 1 1977 SERIAL NO. 538  
 OCT 1 1978 SERIAL NO. 578

NEW JERSEY DEPARTMENT OF THE TREASURY  
 DIVISION OF TAXATION  
 PUBLIC UTILITY TAX BUREAU  
 APPROVED AS A TAX MAP PURSUANT TO THE  
 PROVISIONS OF CHAPTER 175, LAWS OF 1913  
 BY *C. Chasner*  
 DATE OCT 1 1959 SERIAL NO. 243

TAX MAP  
 VILLAGE OF RIDGEWOOD  
 BERGEN COUNTY N. J.  
 ROBERT MARSHALL  
 SCALE: 1" = 100'  
 P.E. & L.S. JJ309  
 DATE OCTOBER 1, 1959 REVISED OCTOBER 1, 1964  
 REVISED OCTOBER 1, 1969 REVISED OCTOBER 1, 1974  
 REVISED SEPTEMBER 25, 1978  
 REVISED APRIL 1, 1985



NEW JERSEY DEPARTMENT OF THE TREASURY  
 DIVISION OF TAXATION  
 PROPERTY ADMINISTRATION  
 APPROVED AS A TAX MAP PURSUANT TO THE  
 PROVISIONS OF CHAPTER 175, LAWS OF 1913, ETC.  
 FOR THE DIRECTOR, DIVISION OF TAXATION  
 BY *J. H. DeMarco*, P.E. & L.S.  
 LIC. # 15434 MANAGER, ANALYSIS SECTION  
 DATE JUL 8 1974 SERIAL NO. 741

MAY 8 1985 643  
 NEW JERSEY DEPARTMENT OF THE TREASURY  
 DIVISION OF TAXATION  
 LOCAL PROPERTY AND PUBLIC UTILITY BRANCH  
 APPROVED AS A TAX MAP PURSUANT TO THE  
 PROVISIONS OF CHAPTER 175, LAWS OF 1913, ETC.  
 FOR THE DIRECTOR, DIVISION OF TAXATION  
 BY *J. H. DeMarco*, P.E. & L.S.  
 LIC. # 15434 MANAGER, ANALYSIS SECTION  
 DATE OCT 1 1974 SERIAL NO. 538  
 OCT 1 1978

NEW JERSEY DEPARTMENT OF THE TREASURY  
 DIVISION OF TAXATION  
 PUBLIC UTILITY TAX BUREAU  
 APPROVED AS A TAX MAP PURSUANT TO THE  
 PROVISIONS OF CHAPTER 175, LAWS OF 1913, ETC.  
 FOR THE DIRECTOR, DIVISION OF TAXATION  
 BY *J. H. DeMarco*, P.E. & L.S.  
 LIC. # 15434 MANAGER, ANALYSIS SECTION  
 DATE JAN 16 1970 SERIAL NO. 480

NEW JERSEY DEPARTMENT OF THE TREASURY  
 DIVISION OF TAXATION  
 PUBLIC UTILITY TAX BUREAU  
 APPROVED AS A TAX MAP PURSUANT TO THE  
 PROVISIONS OF CHAPTER 175, LAWS OF 1913, ETC.  
 FOR THE DIRECTOR, DIVISION OF TAXATION  
 BY *J. H. DeMarco*, P.E. & L.S.  
 LIC. # 15434 MANAGER, ANALYSIS SECTION  
 DATE OCT 27 1964 SERIAL NO. 418

NEW JERSEY DEPARTMENT OF THE TREASURY  
 DIVISION OF TAXATION  
 APPROVED AS A TAX MAP PURSUANT TO THE  
 PROVISIONS OF CHAPTER 175, LAWS OF 1913  
 BY *C. J. DeMarco*, P.E. & L.S.  
 LIC. # 15434 MANAGER, ANALYSIS SECTION  
 DATE OCT 1 1958 SERIAL NO. 248

TAX MAP  
 VILLAGE OF RIDGEWOOD  
 BERGEN COUNTY N. J.  
 ROBERT MARSHALL  
 SCALE: 1" = 100'  
 P.E. & L.S. #1309  
 DATE OCTOBER 1, 1969  
 REVISIONS:  
 OCTOBER 1, 1964  
 OCTOBER 1, 1969  
 OCTOBER 7, 1974  
 SEPTEMBER 25, 1978  
 APRIL 1, 1985



SHEET 40

SHEET 42

SHEET 42

SHEET 40

SHEET 41

MAY 8 1955  
NEW JERSEY DEPARTMENT OF THE TREASURY  
DIVISION OF TAXATION  
PUBLIC UTILITY TAX BUREAU  
APPROVED AS A TAX MAP PURSUANT TO THE  
PROVISIONS OF CHAPTER 175, LAWS OF 1913, ETC.  
FOR THE DIRECTOR, DIVISION OF TAXATION  
BY *J.H. Omas*  
DATE OCT 1 1974 SERIAL NO. 538

SHEET 44

SHEET 44

SHEET 45

SHEET 45



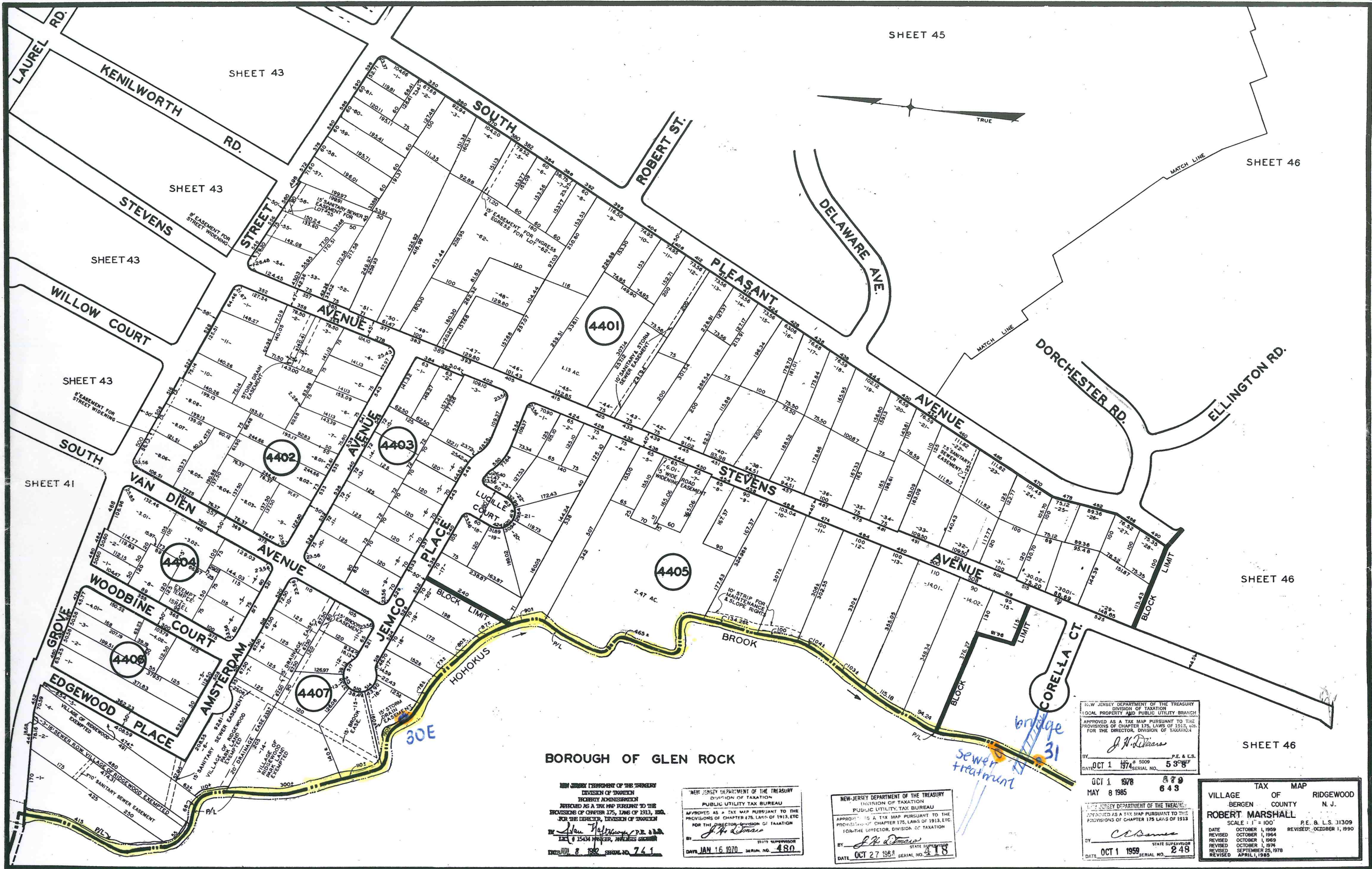
NEW JERSEY DEPARTMENT OF THE TREASURY  
DIVISION OF TAXATION  
PUBLIC UTILITY TAX BUREAU  
APPROVED AS A TAX MAP PURSUANT TO THE  
PROVISIONS OF CHAPTER 175, LAWS OF 1913, ETC.  
FOR THE DIRECTOR, DIVISION OF TAXATION  
BY *J.H. Omas*  
DATE OCT 8 1972 SERIAL NO. 941

NEW JERSEY DEPARTMENT OF THE TREASURY  
DIVISION OF TAXATION  
PUBLIC UTILITY TAX BUREAU  
APPROVED AS A TAX MAP PURSUANT TO THE  
PROVISIONS OF CHAPTER 175, LAWS OF 1913, ETC.  
FOR THE DIRECTOR, DIVISION OF TAXATION  
BY *J.H. Omas*  
DATE JAN 16 1970 SERIAL NO. 480

VILLAGE TAX MAP  
OF  
RIDGEWOOD  
BERGEN COUNTY N. J.  
ROBERT MARSHALL  
SCALE: 1" = 100'  
DATE OCT 1 1959  
REVISED OCT 1 1964  
REVISED OCT 1 1969  
REVISED OCT 1 1974  
REVISED SEPTEMBER 25, 1978  
REVISED APRIL 1, 1985

NEW JERSEY DEPARTMENT OF THE TREASURY  
DIVISION OF TAXATION  
PUBLIC UTILITY TAX BUREAU  
APPROVED AS A TAX MAP PURSUANT TO THE  
PROVISIONS OF CHAPTER 175, LAWS OF 1913, ETC.  
FOR THE DIRECTOR, DIVISION OF TAXATION  
BY *J.H. Omas*  
DATE OCT 27 1961 SERIAL NO. 418

NEW JERSEY DEPARTMENT OF THE TREASURY  
DIVISION OF TAXATION  
PUBLIC UTILITY TAX BUREAU  
APPROVED AS A TAX MAP PURSUANT TO THE  
PROVISIONS OF CHAPTER 175, LAWS OF 1913  
BY *C. Omas*  
DATE OCT 1 1959 SERIAL NO. 248



SHEET 45

SHEET 46

SHEET 46

SHEET 46

BOROUGH OF GLEN ROCK

NEW JERSEY DEPARTMENT OF THE TREASURY  
 DIVISION OF TAXATION  
 PROPERTY TAX BUREAU  
 APPROVED AS A TAX MAP PURSUANT TO THE  
 PROVISIONS OF CHAPTER 175, LAWS OF 1913, ETC.  
 FOR THE DIRECTOR, DIVISION OF TAXATION  
 BY *J. H. Thomas* P.E. & L.S.  
 DATE JAN 8 1982 SERIAL NO. 741

NEW JERSEY DEPARTMENT OF THE TREASURY  
 DIVISION OF TAXATION  
 PUBLIC UTILITY TAX BUREAU  
 APPROVED AS A TAX MAP PURSUANT TO THE  
 PROVISIONS OF CHAPTER 175, LAWS OF 1913, ETC.  
 FOR THE DIRECTOR, DIVISION OF TAXATION  
 BY *J. H. Thomas*  
 DATE JAN 16 1970 SERIAL NO. 480

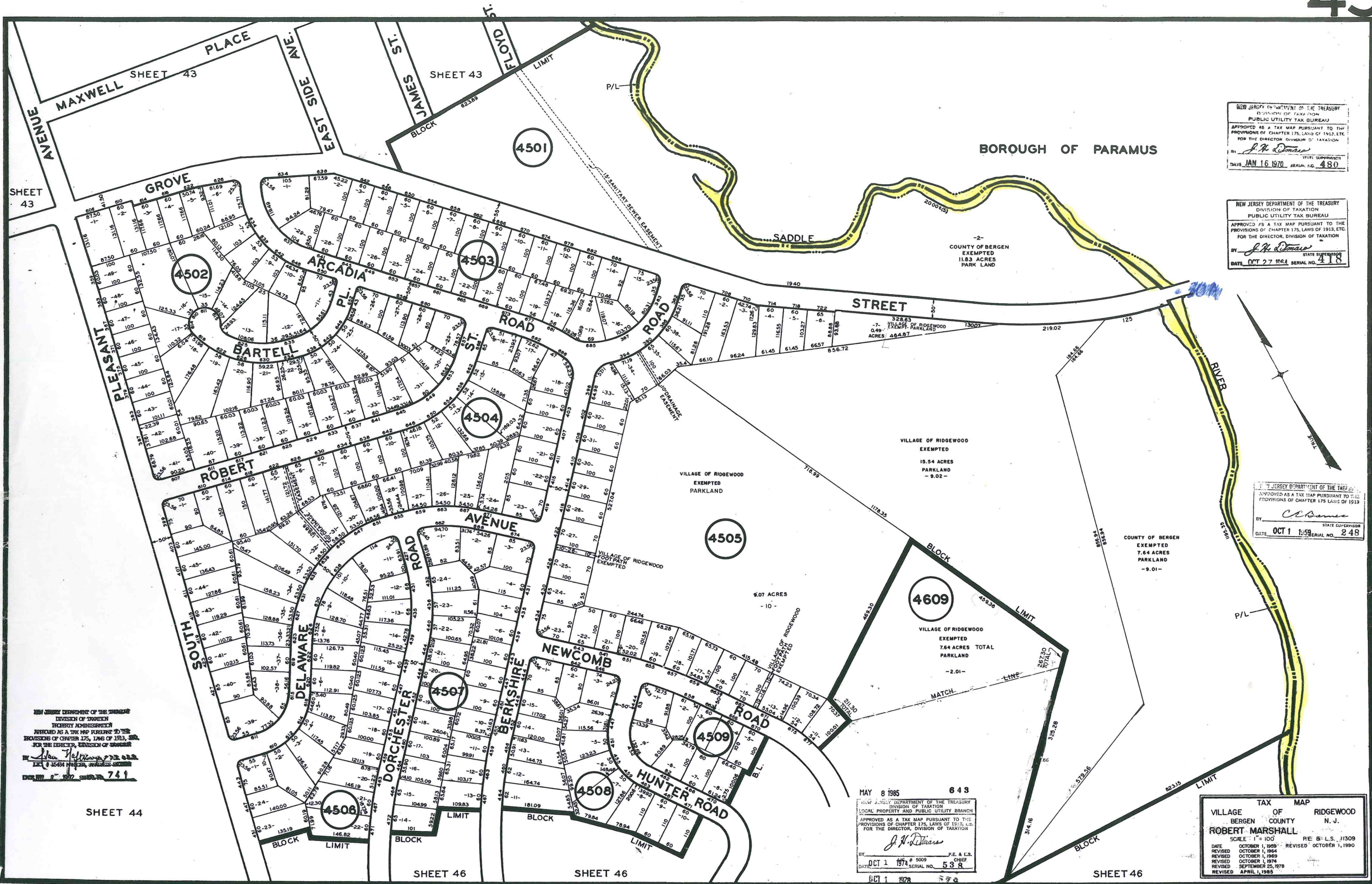
NEW JERSEY DEPARTMENT OF THE TREASURY  
 DIVISION OF TAXATION  
 PUBLIC UTILITY TAX BUREAU  
 APPROVED AS A TAX MAP PURSUANT TO THE  
 PROVISIONS OF CHAPTER 175, LAWS OF 1913, ETC.  
 FOR THE DIRECTOR, DIVISION OF TAXATION  
 BY *J. H. Thomas*  
 DATE OCT 27 1980 SERIAL NO. 418

NEW JERSEY DEPARTMENT OF THE TREASURY  
 DIVISION OF TAXATION  
 LOCAL PROPERTY AND PUBLIC UTILITY BRANCH  
 APPROVED AS A TAX MAP PURSUANT TO THE  
 PROVISIONS OF CHAPTER 175, LAWS OF 1913, ETC.  
 FOR THE DIRECTOR, DIVISION OF TAXATION  
 BY *J. H. Thomas* P.E. & L.S.  
 DATE OCT 1 1978 SERIAL NO. 598

NEW JERSEY DEPARTMENT OF THE TREASURY  
 DIVISION OF TAXATION  
 LOCAL PROPERTY AND PUBLIC UTILITY BRANCH  
 APPROVED AS A TAX MAP PURSUANT TO THE  
 PROVISIONS OF CHAPTER 175, LAWS OF 1913, ETC.  
 FOR THE DIRECTOR, DIVISION OF TAXATION  
 BY *C. B. Stone*  
 DATE OCT 1 1959 SERIAL NO. 248

TAX MAP  
 VILLAGE OF RIDGEWOOD  
 BERGEN COUNTY N. J.  
 ROBERT MARSHALL  
 SCALE: 1" = 100'  
 DATE OCTOBER 1, 1959  
 REVISIONS: OCTOBER 1, 1964; OCTOBER 1, 1969; OCTOBER 1, 1976; SEPTEMBER 25, 1978; APRIL 1, 1985  
 P.E. & L.S. 31309  
 REVISION: OCTOBER 1, 1990

bridge 31  
 sewer treatment



NEW JERSEY DEPARTMENT OF THE TREASURY  
 DIVISION OF TAXATION  
 PUBLIC UTILITY TAX BUREAU  
 APPROVED AS A TAX MAP PURSUANT TO THE  
 PROVISIONS OF CHAPTER 175, LAWS OF 1913, ETC.  
 FOR THE DIRECTOR, DIVISION OF TAXATION  
 BY *J. H. Adams* STATE SUPERVISOR  
 DATE JAN 16 1970 SERIAL NO. 480

NEW JERSEY DEPARTMENT OF THE TREASURY  
 DIVISION OF TAXATION  
 PUBLIC UTILITY TAX BUREAU  
 APPROVED AS A TAX MAP PURSUANT TO THE  
 PROVISIONS OF CHAPTER 175, LAWS OF 1913, ETC.  
 FOR THE DIRECTOR, DIVISION OF TAXATION  
 BY *J. H. Adams* STATE SUPERVISOR  
 DATE OCT 27 1964 SERIAL NO. 418

NEW JERSEY DEPARTMENT OF THE TREASURY  
 DIVISION OF TAXATION  
 APPROVED AS A TAX MAP PURSUANT TO THE  
 PROVISIONS OF CHAPTER 175 LAWS OF 1913  
 BY *C. Adams* STATE SUPERVISOR  
 DATE OCT 1 1959 SERIAL NO. 248

NEW JERSEY DEPARTMENT OF THE TREASURY  
 DIVISION OF TAXATION  
 APPROVED AS A TAX MAP PURSUANT TO THE  
 PROVISIONS OF CHAPTER 175, LAWS OF 1913, ETC.  
 FOR THE DIRECTOR, DIVISION OF TAXATION  
 BY *Stan Helfman* STATE SUPERVISOR  
 DATE 11 18 1962 SERIAL NO. 741

MAY 8 1985 643  
 NEW JERSEY DEPARTMENT OF THE TREASURY  
 DIVISION OF TAXATION  
 LOCAL PROPERTY AND PUBLIC UTILITY BRANCH  
 APPROVED AS A TAX MAP PURSUANT TO THE  
 PROVISIONS OF CHAPTER 175, LAWS OF 1913, ETC.  
 FOR THE DIRECTOR, DIVISION OF TAXATION  
 BY *J. H. Adams* STATE SUPERVISOR  
 DATE OCT 1 1974 SERIAL NO. 538

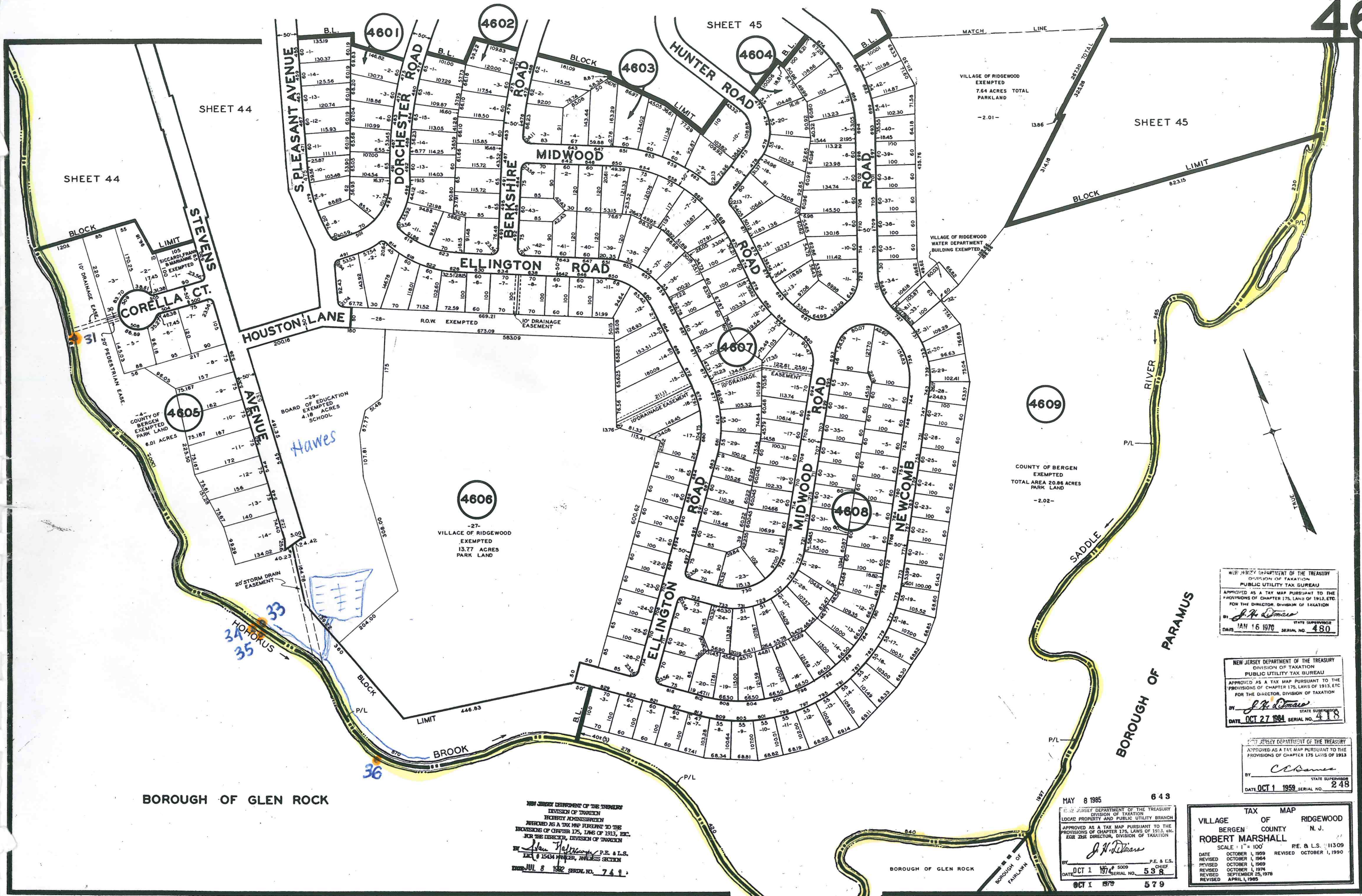
VILLAGE TAX MAP  
 OF  
 RIDGEWOOD  
 BERGEN COUNTY N. J.  
 ROBERT MARSHALL  
 SCALE 1" = 100' RE: B. L.S. 11309  
 DATE OCTOBER 1, 1959 REVISED OCTOBER 1, 1960  
 REVISED OCTOBER 1, 1964 REVISED OCTOBER 1, 1969  
 REVISED OCTOBER 1, 1974 REVISED SEPTEMBER 25, 1978  
 REVISED APRIL 1, 1985

SHEET 44

SHEET 46

SHEET 46

SHEET 46



BOROUGH OF GLEN ROCK

NEW JERSEY DEPARTMENT OF THE TREASURY  
 DIVISION OF TAXATION  
 EXEMPTED  
 APPROVED AS A TAX MAP PURSUANT TO THE PROVISIONS OF CHAPTER 175, LAWS OF 1913, ETC. FOR THE DIRECTOR, DIVISION OF TAXATION  
 BY *John P. ...* P.E. & L.S.  
 DATE: JUL 8 1982 SERIAL NO. 741

MAY 8 1985  
 NEW JERSEY DEPARTMENT OF THE TREASURY  
 DIVISION OF TAXATION  
 LOCAL PROPERTY AND PUBLIC UTILITY BRANCH  
 APPROVED AS A TAX MAP PURSUANT TO THE PROVISIONS OF CHAPTER 175, LAWS OF 1913, ETC. FOR THE DIRECTOR, DIVISION OF TAXATION  
 BY *J. N. ...* P.E. & L.S.  
 DATE: OCT 1 1979 SERIAL NO. 538

VILLAGE TAX MAP  
 OF  
 RIDGEWOOD  
 BERGEN COUNTY N. J.  
 ROBERT MARSHALL  
 SCALE: 1" = 100'  
 DATE: OCTOBER 1, 1969 REVISOR: OCTOBER 1, 1990  
 REVISOR: OCTOBER 1, 1969  
 REVISOR: OCTOBER 1, 1974  
 REVISOR: SEPTEMBER 25, 1978  
 REVISOR: APRIL 1, 1985

NEW JERSEY DEPARTMENT OF THE TREASURY  
 DIVISION OF TAXATION  
 PUBLIC UTILITY TAX BUREAU  
 APPROVED AS A TAX MAP PURSUANT TO THE PROVISIONS OF CHAPTER 175, LAWS OF 1913, ETC. FOR THE DIRECTOR, DIVISION OF TAXATION  
 BY *J. H. ...*  
 DATE: JAN 16 1970 SERIAL NO. 480

NEW JERSEY DEPARTMENT OF THE TREASURY  
 DIVISION OF TAXATION  
 PUBLIC UTILITY TAX BUREAU  
 APPROVED AS A TAX MAP PURSUANT TO THE PROVISIONS OF CHAPTER 175, LAWS OF 1913, ETC. FOR THE DIRECTOR, DIVISION OF TAXATION  
 BY *J. H. ...*  
 DATE: OCT 27 1984 SERIAL NO. 418

NEW JERSEY DEPARTMENT OF THE TREASURY  
 DIVISION OF TAXATION  
 APPROVED AS A TAX MAP PURSUANT TO THE PROVISIONS OF CHAPTER 175, LAWS OF 1913  
 BY *C. ...*  
 DATE: OCT 1 1959 SERIAL NO. 248

4609

4606

4608

4605

4607

4601

4602

4604

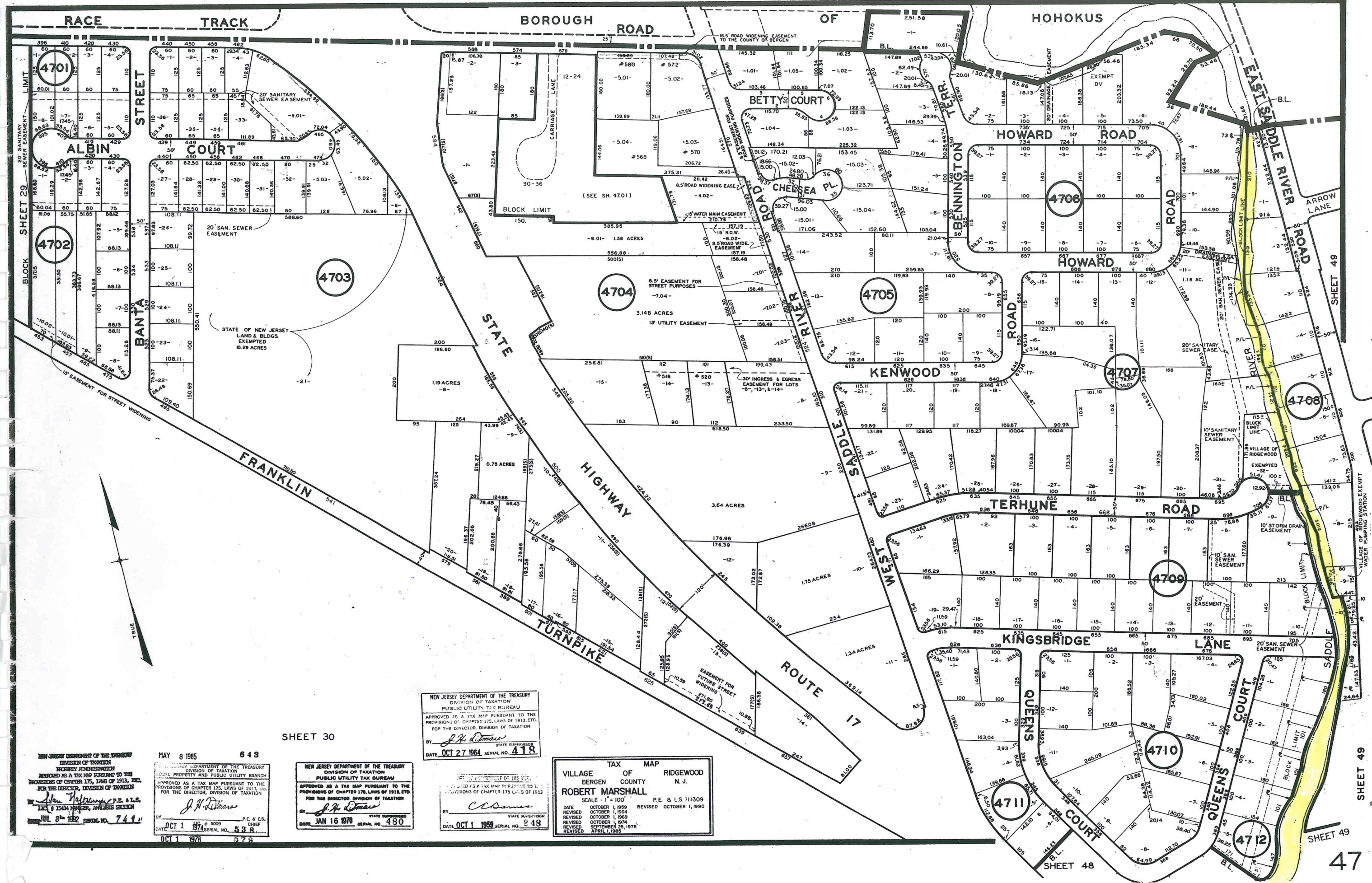
4603

SHEET 44

SHEET 44

SHEET 45

SHEET 45



SHEET 30

NEW JERSEY DEPARTMENT OF THE TREASURY  
 DIVISION OF TAXATION  
 PUBLIC UTILITY TAX BUREAU  
 APPROVED AS A TAX MAP PURSUANT TO THE PROVISIONS OF CHAPTER 175, LAWS OF 1913, ETC.  
 FOR THE DIRECTOR, DIVISION OF TAXATION  
 BY *J. H. Roman* STATE SUPERVISOR  
 DATE OCT 27 1964 SERIAL NO. 418

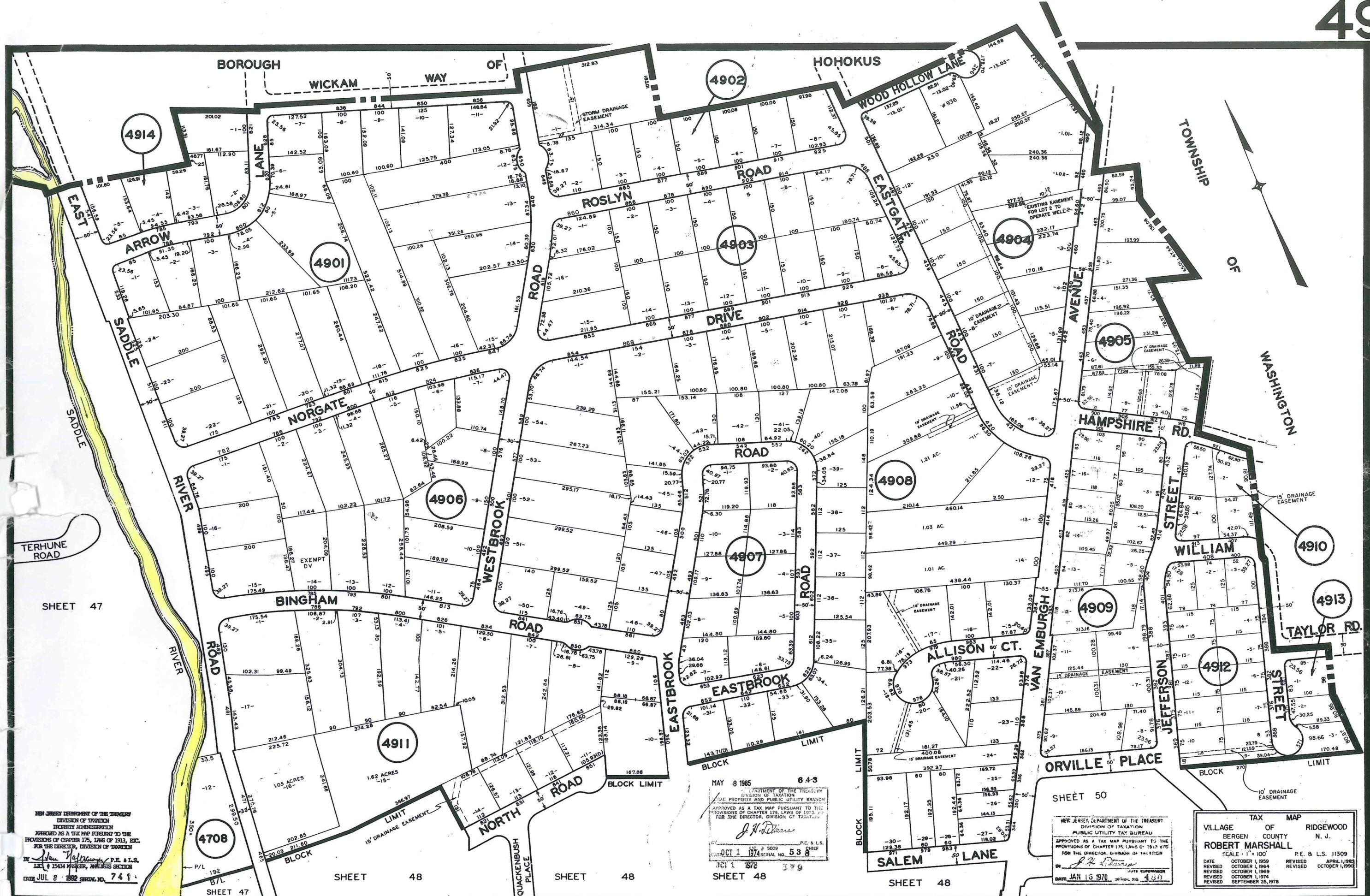
VILLAGE OF RIDGEWOOD  
 BERGEN COUNTY N. J.  
 TAX MAP  
 ROBERT MARSHALL  
 SCALE 1" = 100' P.E. & L.S. 111309  
 DATE OCTOBER 1, 1959 REVISED OCTOBER 1, 1990  
 REVISED OCTOBER 1, 1964  
 REVISED OCTOBER 1, 1969  
 REVISED OCTOBER 1, 1974  
 REVISED SEPTEMBER 25, 1978  
 REVISED APRIL 1, 1985

NEW JERSEY DEPARTMENT OF THE TREASURY  
 DIVISION OF TAXATION  
 PUBLIC UTILITY TAX BUREAU  
 APPROVED AS A TAX MAP PURSUANT TO THE PROVISIONS OF CHAPTER 175, LAWS OF 1913, ETC.  
 FOR THE DIRECTOR, DIVISION OF TAXATION  
 BY *J. H. Roman* STATE SUPERVISOR  
 DATE JAN 16 1970 SERIAL NO. 480

MAY 8 1965 643  
 NEW JERSEY DEPARTMENT OF THE TREASURY  
 DIVISION OF TAXATION  
 LOCAL PROPERTY AND PUBLIC UTILITY BRANCH  
 APPROVED AS A TAX MAP PURSUANT TO THE PROVISIONS OF CHAPTER 175, LAWS OF 1913, ETC.  
 FOR THE DIRECTOR, DIVISION OF TAXATION  
 BY *J. H. Roman* STATE SUPERVISOR  
 DATE OCT 1 1974 SERIAL NO. 538

NEW JERSEY DEPARTMENT OF THE TREASURY  
 DIVISION OF TAXATION  
 REVENUE ADMINISTRATION  
 APPROVED AS A TAX MAP PURSUANT TO THE PROVISIONS OF CHAPTER 175, LAWS OF 1913, ETC.  
 FOR THE DIRECTOR, DIVISION OF TAXATION  
 BY *J. H. Roman* STATE SUPERVISOR  
 DATE JUL 8 1962 SERIAL NO. 744

SHEET 49



SHEET 47

SHEET 50

SHEET 48

SHEET 48

SHEET 48

SHEET 48

NEW JERSEY DEPARTMENT OF THE TREASURY  
 DIVISION OF TAXATION  
 PROPERTY ADMINISTRATION  
 APPROVED AS A TAX MAP PURSUANT TO THE  
 PROVISIONS OF CHAPTER 175, LAWS OF 1913, ETC.  
 FOR THE DIRECTOR, DIVISION OF TAXATION

BY *John P. Williams*, P.E. & L.S.  
 L.S. & 15434 MASON, ANALYSIS SECTION  
 DATE JUL 8 1992 SERIAL NO. 741

MAY 8 1985 643  
 DEPARTMENT OF THE TREASURY  
 DIVISION OF TAXATION  
 LOCAL PROPERTY AND PUBLIC UTILITY BRANCH  
 APPROVED AS A TAX MAP PURSUANT TO THE  
 PROVISIONS OF CHAPTER 175, LAWS OF 1913, ETC.  
 FOR THE DIRECTOR, DIVISION OF TAXATION

*J. P. Williams*  
 P.E. & L.S. CHIEF  
 OCT 1 1974 SERIAL NO. 538

NEW JERSEY DEPARTMENT OF THE TREASURY  
 DIVISION OF TAXATION  
 PUBLIC UTILITY TAX BUREAU  
 APPROVED AS A TAX MAP PURSUANT TO THE  
 PROVISIONS OF CHAPTER 175, LAWS OF 1913, ETC.  
 FOR THE DIRECTOR, DIVISION OF TAXATION

BY *J. P. Williams*  
 P.E. & L.S. CHIEF  
 DATE JAN 16 1970 SERIAL NO. 433

TAX MAP  
 VILLAGE OF RIDGEWOOD  
 BERGEN COUNTY N. J.  
 ROBERT MARSHALL  
 SCALE: 1" = 100'  
 P.E. & L.S. #1309  
 DATE OCTOBER 1, 1969 REVISED APRIL 1, 1983  
 REVISED OCTOBER 1, 1984 REVISED OCTOBER 1, 1990  
 REVISED OCTOBER 1, 1994  
 REVISED SEPTEMBER 25, 1978