



# VILLAGE OF RIDGEWOOD BERGEN COUNTY, NEW JERSEY

## FOR BERGEN COUNTY DEPARTMENT OF PLANNING AND ENGINEERING

### FRANKLIN AVENUE / NORTH MAPLE AVENUE CORRIDOR IMPROVEMENTS

FRANKLINE AVENUE - FROM N. BROAD STREET TO N. MAPLE AVENUE  
NORTH MAPLE AVENUE - FROM FRANKLIN AVENUE TO E. RIDGEWOOD AVENUE  
VOR PROJECT NO. 19026

**GENERAL NOTES:**

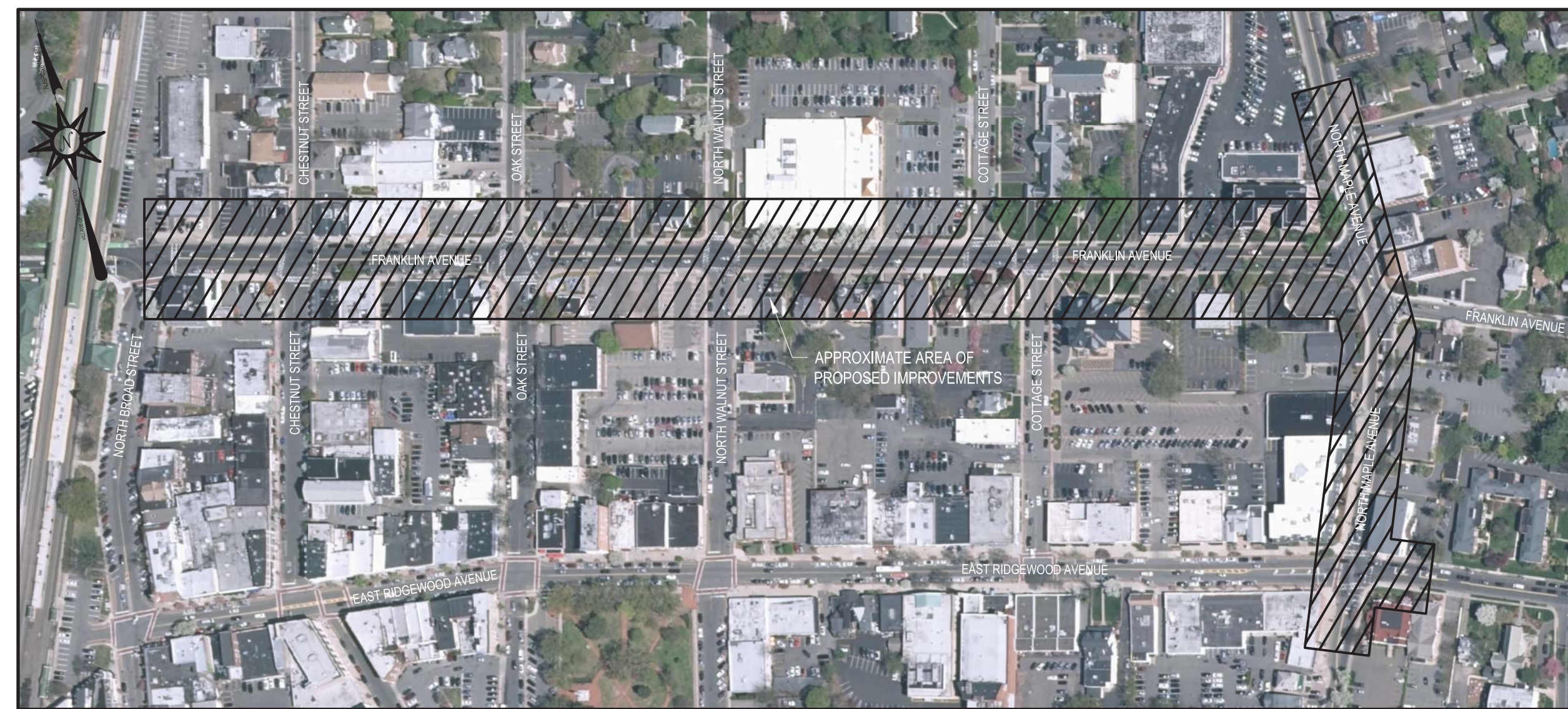
- ALL WORK SHALL CONFORM TO THE NJDOT STANDARD SPECIFICATIONS FOR ROAD AND BRIDGE CONSTRUCTION (LATEST EDITION), AS WELL AS BERGEN COUNTY STANDARDS.
- ALL ADA RAMP SHALL CONFORM TO THE PROPOSED ACCESSIBILITY GUIDELINES FOR PEDESTRIAN FACILITIES IN THE PUBLIC RIGHT-OF-WAY (LATEST EDITION).
- ALL PROPOSED WORK IS TO BE PERFORMED WITHIN THE VILLAGE RIGHT-OF-WAY. IF ANY WORK OUTSIDE OF THE VILLAGE RIGHT-OF-WAY IS NECESSARY, THE VILLAGE SHALL OBTAIN THE APPROPRIATE DOCUMENTATION SAID WORK.
- ALL PAVEMENT MARKINGS AND SIGNAGE (INCLUDING DETOUR SIGNAGE) MUST CONFORM TO STANDARDS SET FORTH IN THE MANUAL ON UNIFORM TRAFFIC CONTROL DEVICES (MUTCD), LATEST EDITION.

**INDEX OF DRAWINGS**

SHEET NAME	DRAWING TITLE	
VOR101	COVER SHEET	(1 of 9)
VOR102a	EXISTING CONDITIONS PLAN	(2 of 9)
VOR102b	EXISTING CONDITIONS PLAN	(3 of 9)
VOR102c	EXISTING CONDITIONS PLAN	(4 of 9)
VOR103a	SITE PLAN	(5 of 9)
VOR103b	SITE PLAN	(6 of 9)
VOR103c	SITE PLAN	(7 of 9)
VOR104	CONSTRUCTION DETAILS	(8 of 9)
VOR105	CONSTRUCTION DETAILS	(9 of 9)

**PUBLIC UTILITIES**

GAS	PUBLIC SERVICE ELECTRIC AND GAS COMPANY
ELECTRIC	PUBLIC SERVICE ELECTRIC AND GAS COMPANY
TEL CO.	VERIZON
TEL CO.	CABLEVISION
WATER	RIDGEWOOD WATER
SEWER	RIDGEWOOD PUBLIC WORKS



**PROJECT LOCATION KEYMAP**  
APPROX SCALE: 1" = 200'

**APPROX. LENGTH OF FRANKLIN AVENUE CORRIDOR = 2,000 LF OR 0.38 MILES**  
**APPROX. LENGTH OF NORTH MAPLE AVENUE = 890 LF OR 0.17 MILES**

**MID-POINT OF PROJECT**

LATITUDE: 40° 58' 51" N  
LONGITUDE: 74° 06' 59" W

MAYOR  
SUSAN KNUDSEN

VILLAGE COUNCIL  
MICHAEL SEDON, DEPUTY MAYOR  
BERNADETTE WALSH, COUNCILWOMAN  
PAMELA PERRON, COUNCILWOMAN  
LORRAINE REYNOLDS, COUNCILWOMAN

CLERK / VILLAGE MANAGER  
HEATHER A. MAILANDER

DIRECTOR OF PUBLIC WORKS / VILLAGE ENGINEER  
CHRISTOPHER J. RUTISHAUSER, PE, CPWM

Christopher J. Rutishauser  
Professional Engineer  
New Jersey License No. 34373  
**PRELIMINARY**  
Date

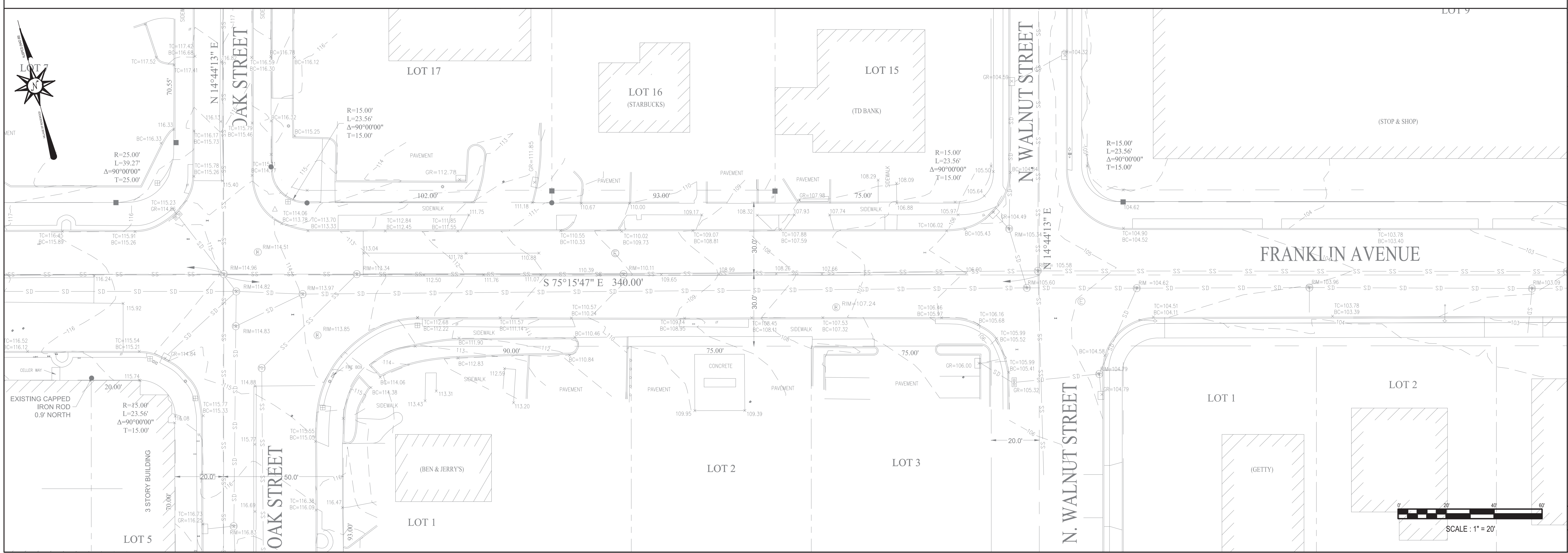
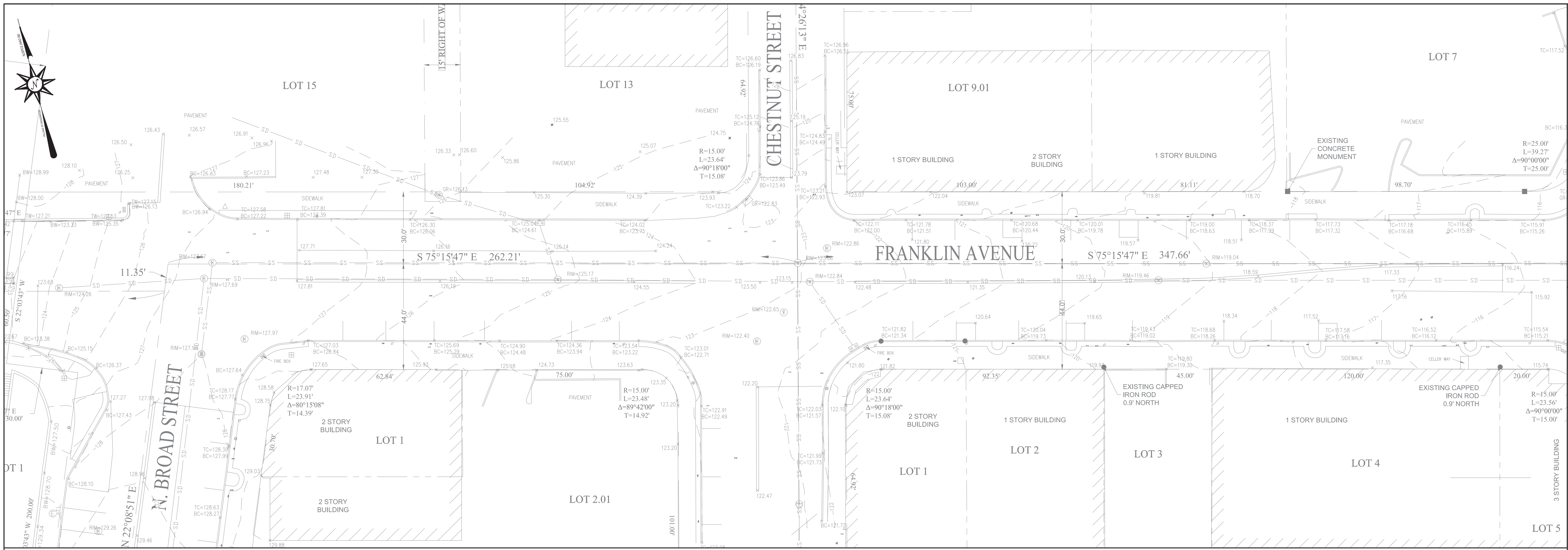
VILLAGE OF RIDGEWOOD  
Department of Public Works  
Division of Engineering  
131 North Maple Avenue  
Ridgewood, New Jersey 07450-3287  
201-670-5500 x 238

Date	Revision	By	Issue Date	Scale
03/04/21	Submission to Village Council	BMD	6/17/19	SEE PLAN

BERGEN COUNTY  
INTERSECTION IMPROVEMENTS ON  
NORTH MAPLE AVE & FRANKLIN AVE  
VOR 101 - COVER SHEET

File No.: 19026  
Sheet No.: 1 OF XX





Christopher J. Rutishauser  
Professional Engineer  
New Jersey License No. 34373

VILLAGE OF RIDGEWOOD  
Department of Public Works  
Division of Engineering  
131 North Maple Avenue  
Ridgewood, New Jersey 07450-3287  
201-670-5500 x 238

Date	Revision	By	Issue Date:
03/04/21	Submission to Village Council	BMD	6/17/19
			Scale:
			SEE PLAN

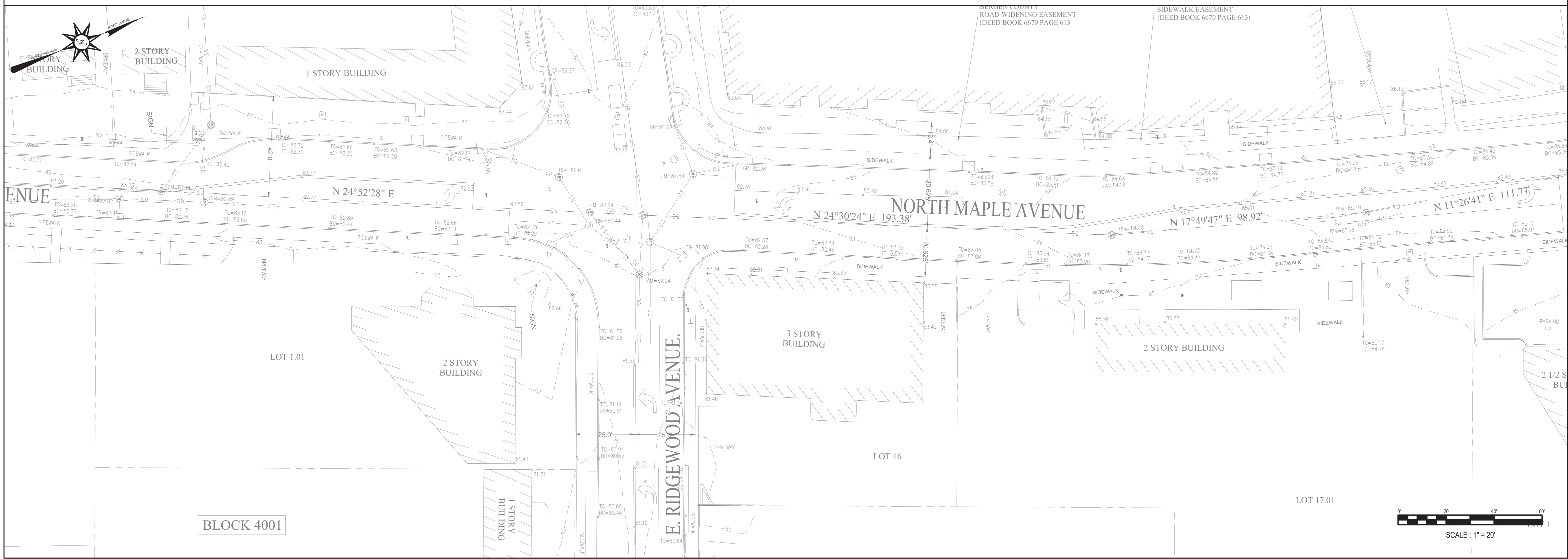
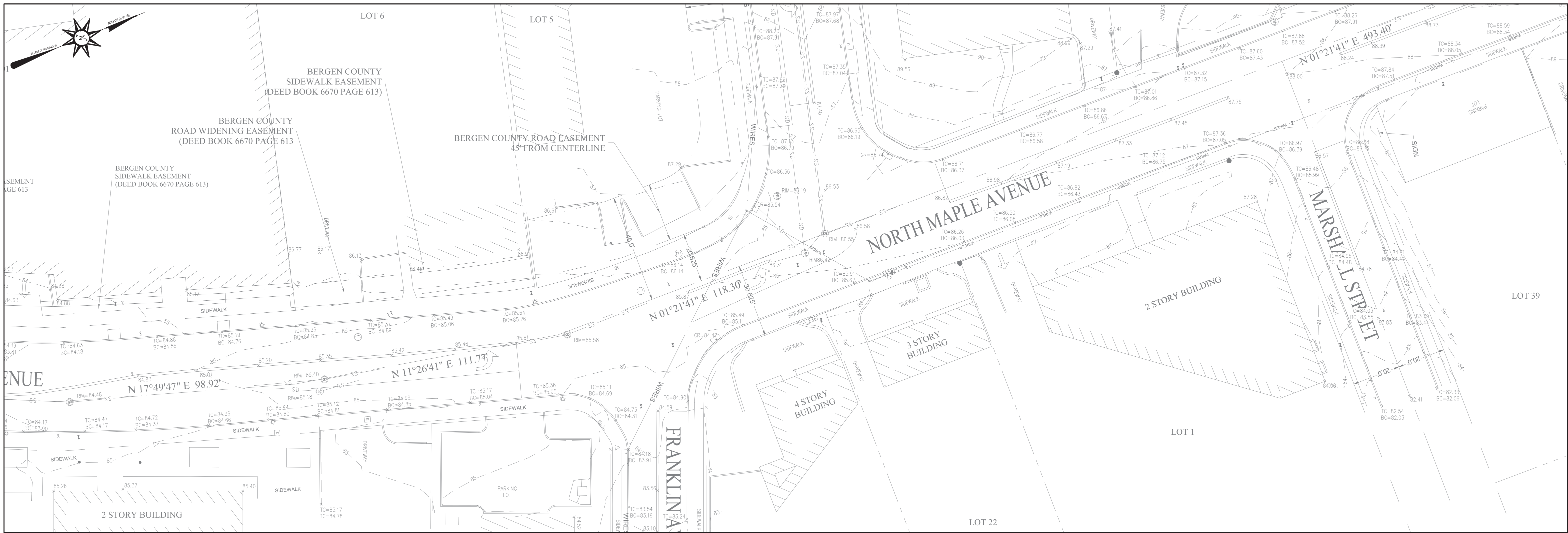
BERGEN COUNTY  
INTERSECTION IMPROVEMENTS ON  
NORTH MAPLE AVE & FRANKLIN AVE  
EXISTING CONDITIONS PLAN  
FRANKLIN AVENUE CORRIDOR (1)

File No.: 19026  
Sheet No.: X OF XX

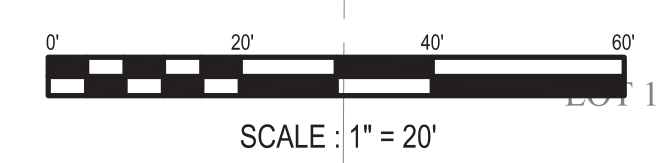








BLOCK 4001



**VILLAGE OF RIDGEWOOD**  
 Department of Public Works  
 Division of Engineering  
 131 North Maple Avenue  
 Ridgewood, New Jersey 07450-3287  
 201-670-5500 x 238

**Christopher J. Rutishauser**  
 Professional Engineer  
 New Jersey License No. 34373

**PRELIMINARY**

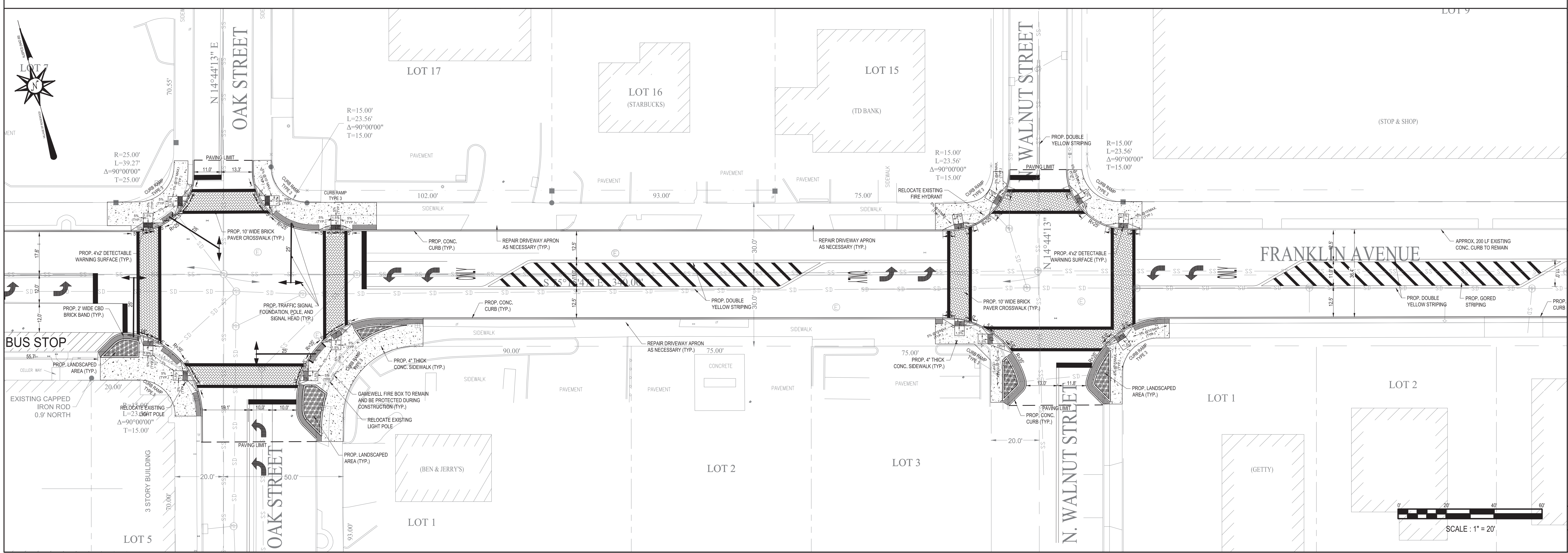
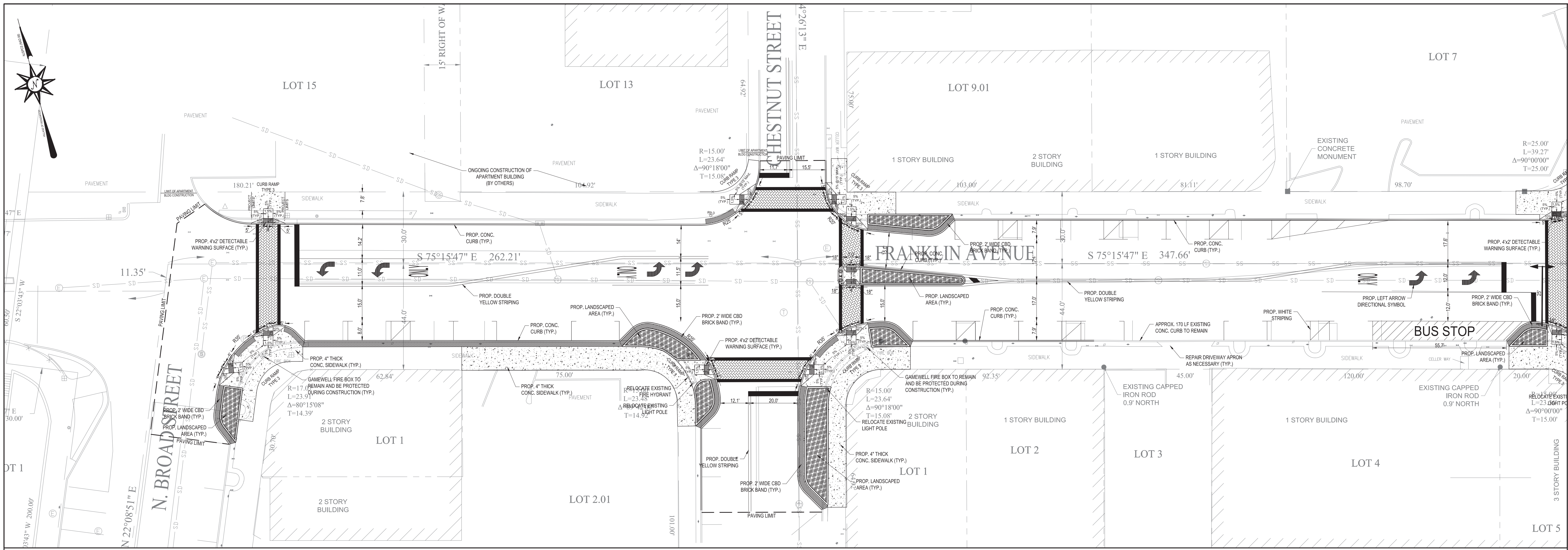
Date \_\_\_\_\_

Date	Revision	By	Issue Date:
03/04/21	Submission to Village Council	BMD	6/17/19
			Scale:
			SEE PLAN

**BERGEN COUNTY**  
**INTERSECTION IMPROVEMENTS ON**  
**NORTH MAPLE AVE & FRANKLIN AVE**  
**EXISTING CONDITIONS PLAN**  
**N. MAPLE AVENUE**

File No.: 19026  
 Sheet No.: X OF XX





**Christopher J. Rutishauser**  
 Professional Engineer  
 New Jersey License No. 33373  
**PRELIMINARY**

**VILLAGE OF RIDGEWOOD**  
 Department of Public Works  
 Division of Engineering  
 131 North Maple Avenue  
 Ridgewood, New Jersey 07450-3287  
 201-670-5500 x 238

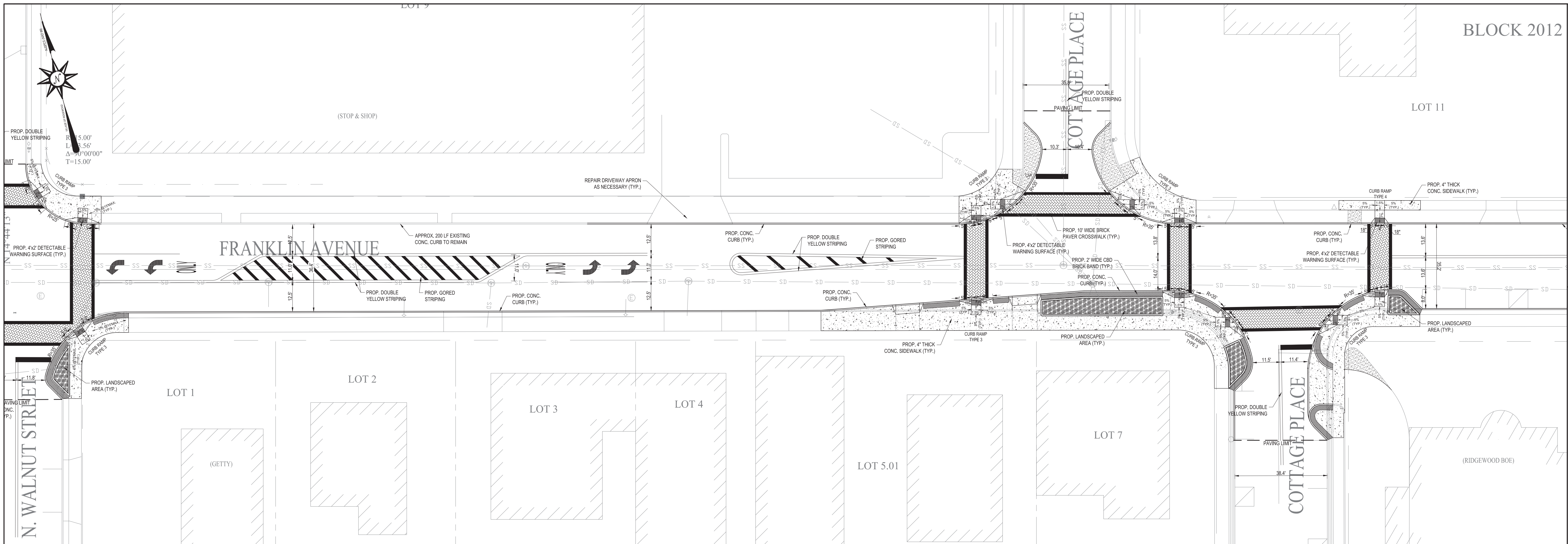
**BERGEN COUNTY**  
**INTERSECTION IMPROVEMENTS ON**  
**NORTH MAPLE AVE & FRANKLIN AVE**  
**VOR 103a - SITE PLAN**  
**FRANKLIN AVENUE CORRIDOR (1)**

File No.: 19026  
 Sheet No.: X OF XX

Date	Revision	By	Issue Date:
03/04/21	Submission to Village Council	BMD	6/17/19
			Scale: SEE PLAN







BLOCK 2012

LOT 11

FRANKLIN AVENUE

COTTAGE PLACE

COTTAGE PLACE

LOT 1

LOT 2

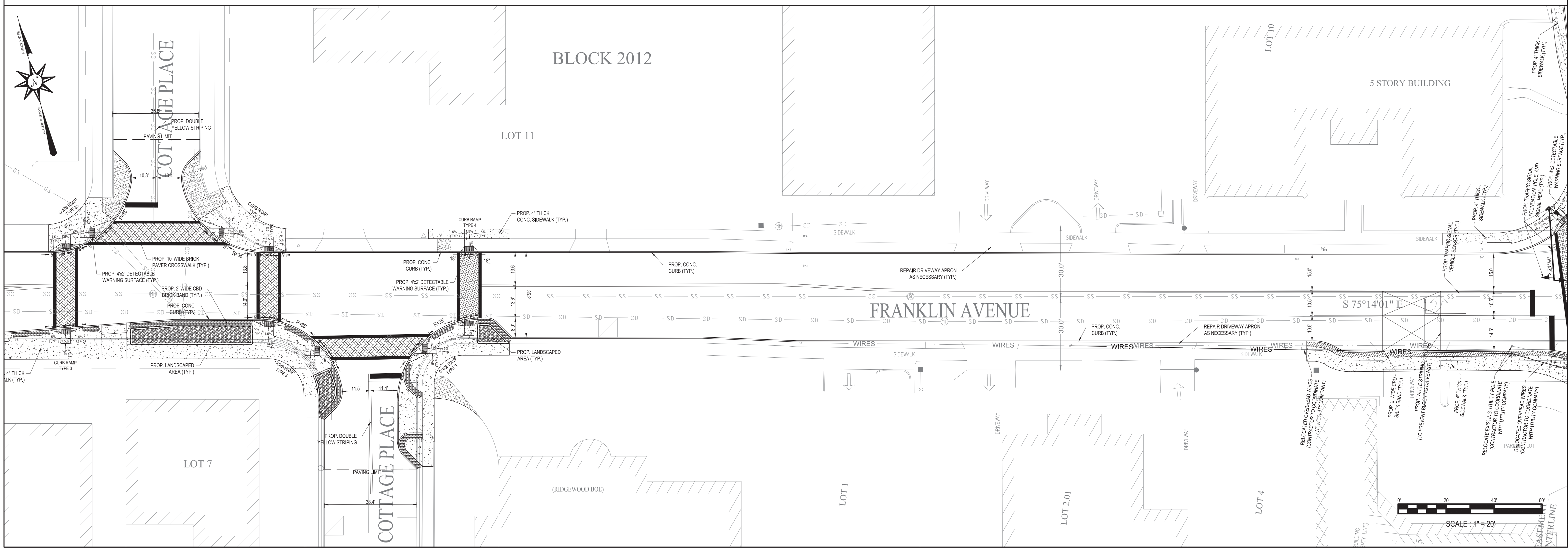
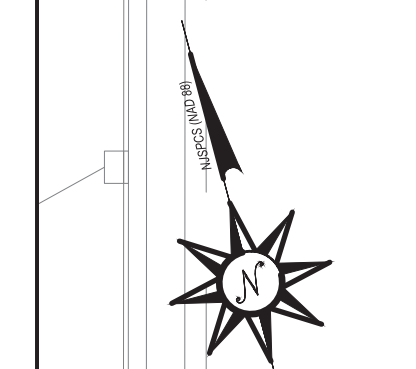
LOT 3

LOT 4

LOT 5.01

LOT 7

N. WALNUT STREET



BLOCK 2012

LOT 11

FRANKLIN AVENUE

LOT 7

COTTAGE PLACE

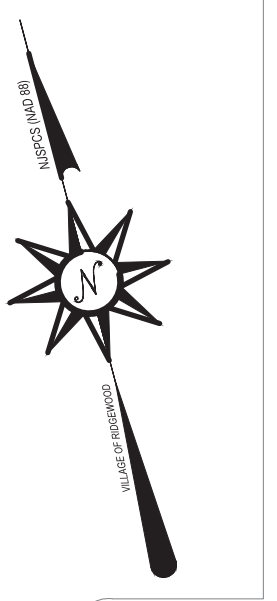
5 STORY BUILDING

LOT 10

LOT 4

LOT 1

LOT 2.01



**Christopher J. Rutishauser**  
Professional Engineer  
New Jersey License No. 33373

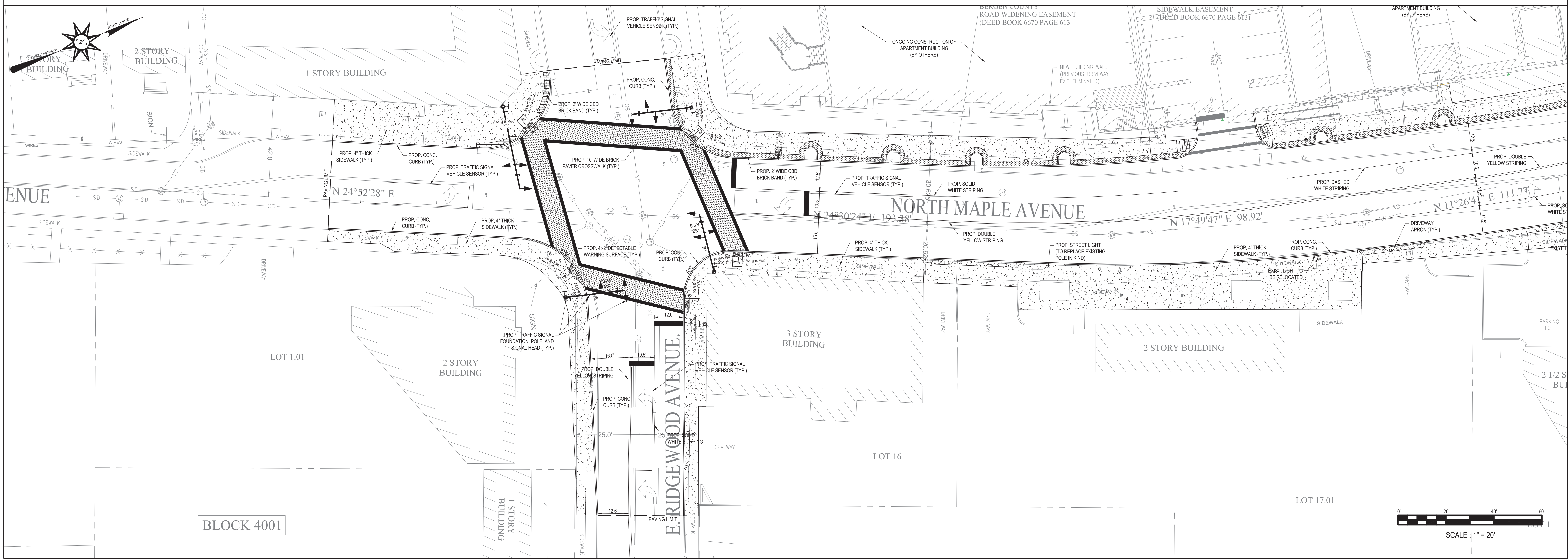
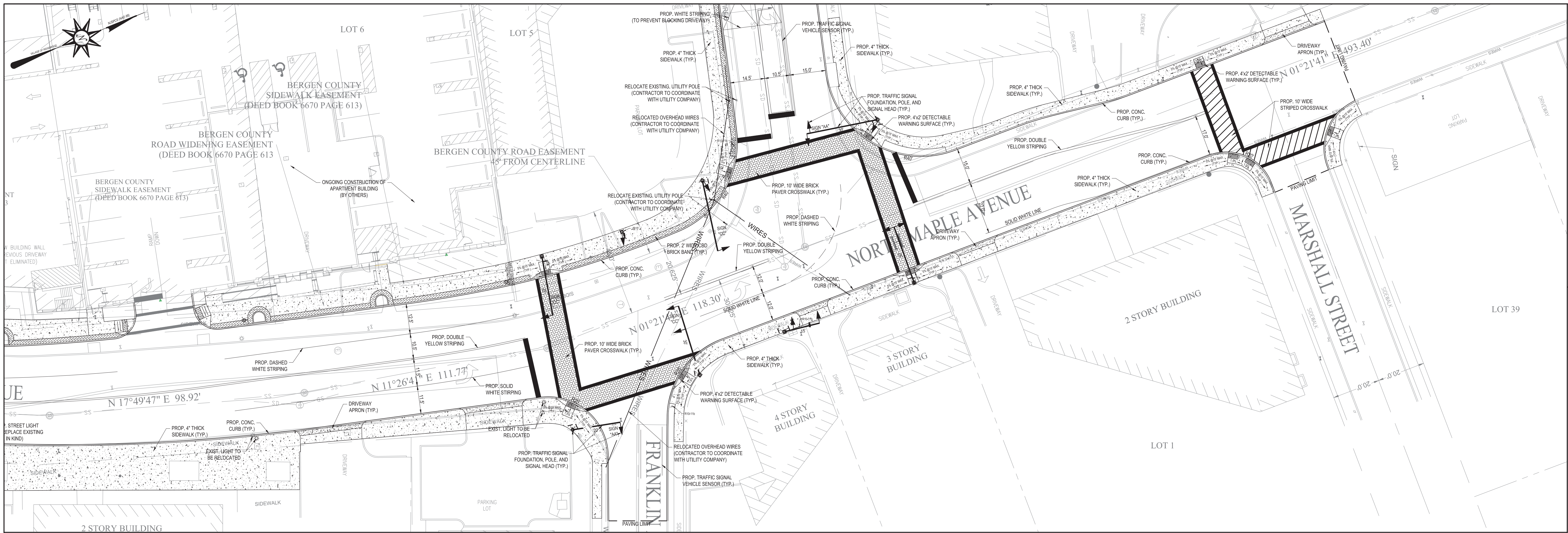
**VILLAGE OF RIDGEWOOD**  
Department of Public Works  
Division of Engineering  
131 North Maple Avenue  
Ridgewood, New Jersey 07450-3287  
201-670-5500 x 238

Date	Revision	By	Issue Date:
03/04/21	Submission to Village Council	BMD	6/17/19
			Scale:
			SEE PLAN

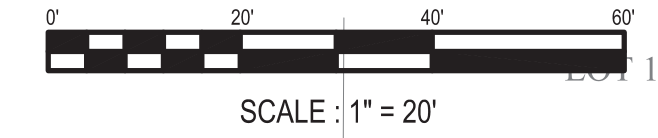
**BERGEN COUNTY**  
**INTERSECTION IMPROVEMENTS ON**  
**NORTH MAPLE AVE & FRANKLIN AVE**  
**VOR103b - SITE PLAN**  
**FRANKLIN AVENUE CORRIDOR (2)**

File No.: 19026  
Sheet No.: X OF XX





BLOCK 4001



**VILLAGE OF RIDGEWOOD**  
 Department of Public Works  
 Division of Engineering  
 131 North Maple Avenue  
 Ridgewood, New Jersey 07450-3287  
 201-670-5500 x 238

**Christopher J. Rutishauser**  
 Professional Engineer  
 New Jersey License No. 33373

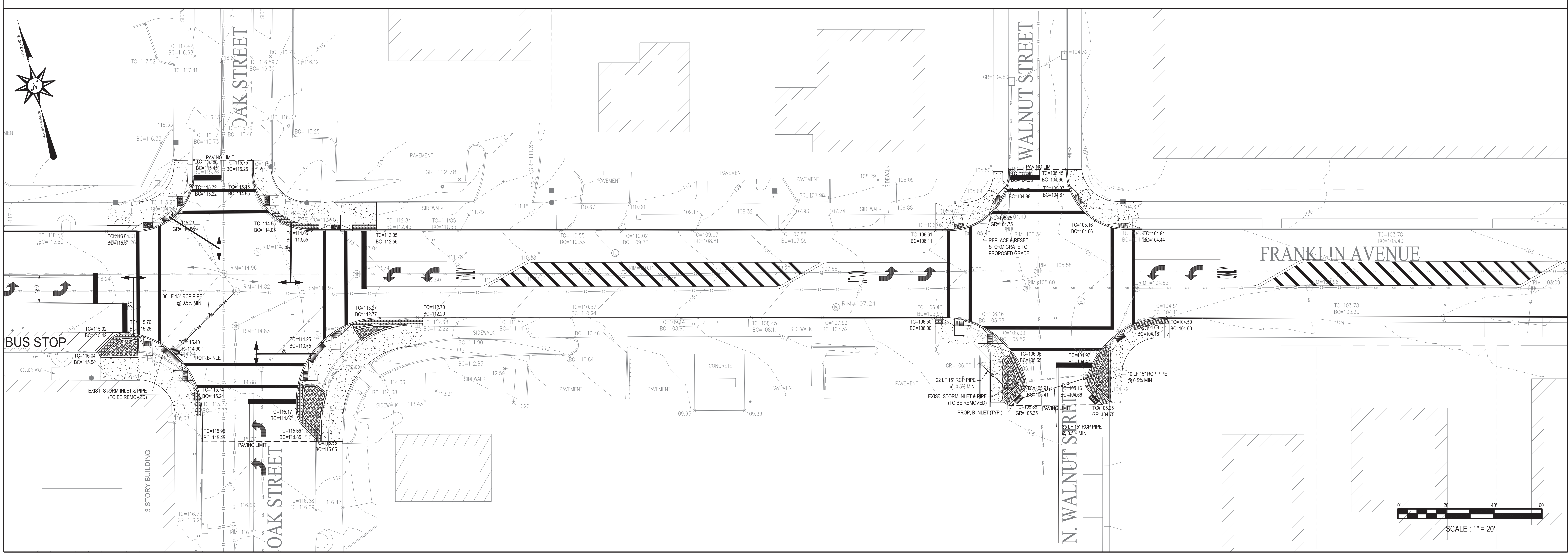
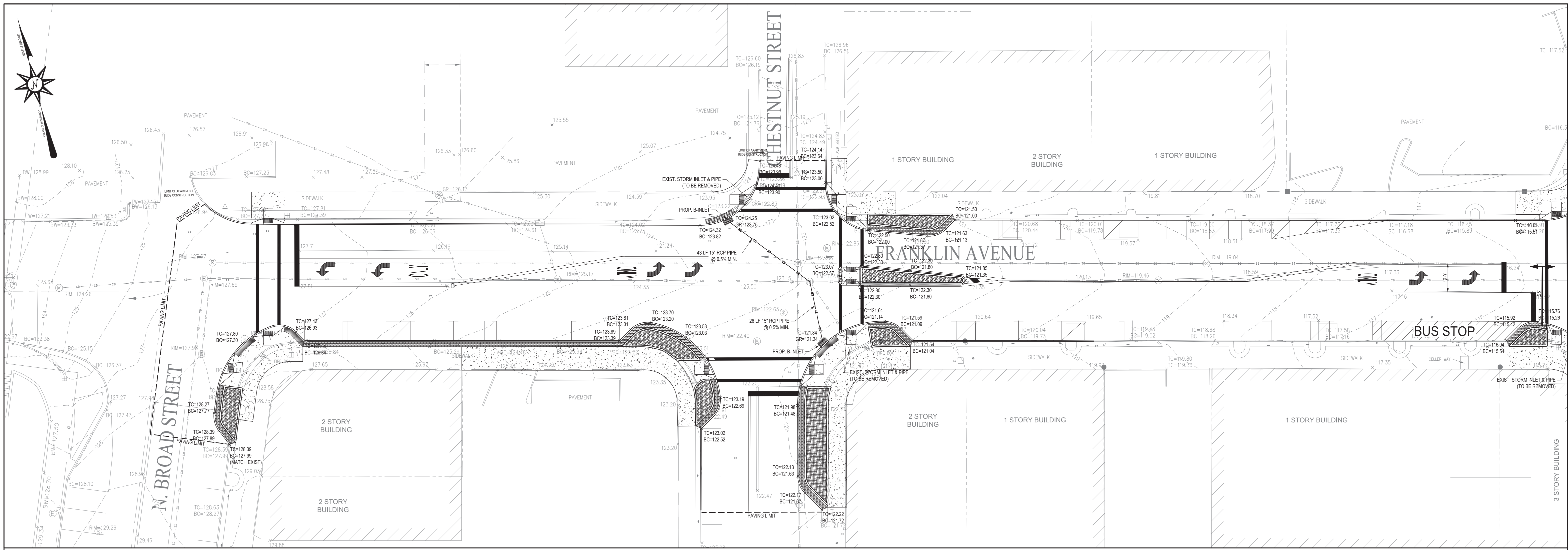
**PRELIMINARY**

Issue Date:	6/17/19
By:	BMD
Revision:	Submission to Village Council
Date:	03/04/21
Scale:	SEE PLAN

**BERGEN COUNTY**  
**INTERSECTION IMPROVEMENTS ON**  
**NORTH MAPLE AVE & FRANKLIN AVE**  
**VOR103c - SITE PLAN**  
**N. MAPLE AVENUE**

File No.: 19026  
 Sheet No.: X OF XX





**Christopher J. Rutishauser**  
 Professional Engineer  
 New Jersey License No. 34373

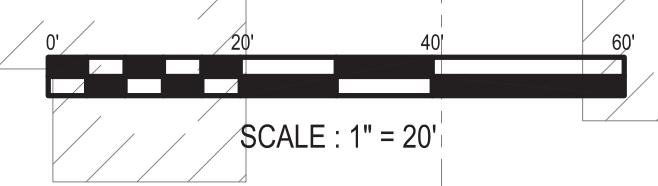
**PRELIMINARY**  
 Date \_\_\_\_\_

**VILLAGE OF RIDGEWOOD**  
 Department of Public Works  
 Division of Engineering  
 131 North Maple Avenue  
 Ridgewood, New Jersey 07450-3287  
 201-670-5500 x 238

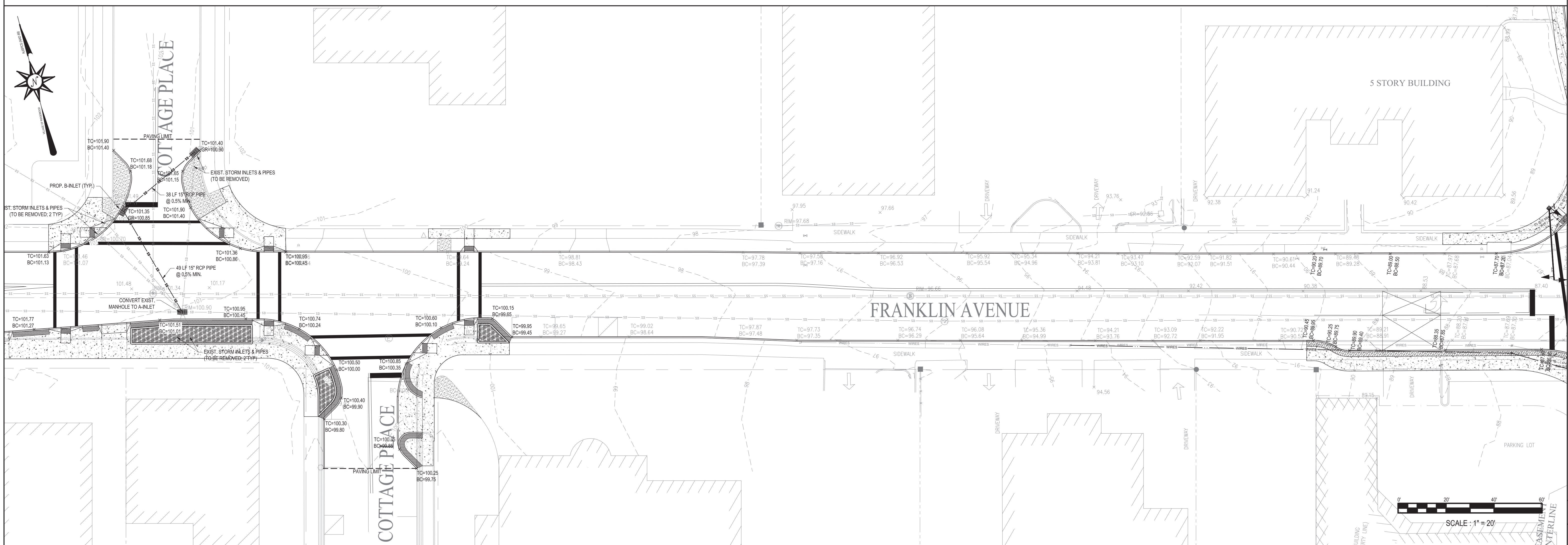
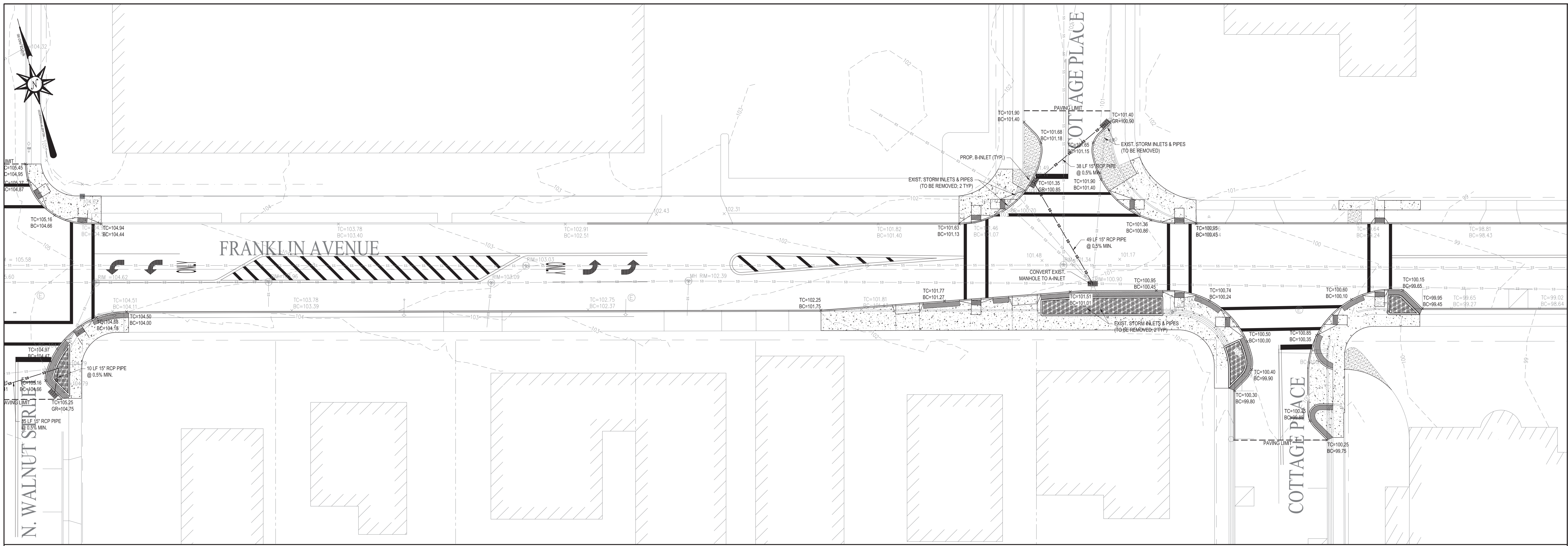
Date	Revision	By	Issue Date:
03/04/21	Submission to Village Council	BMD	6/17/19
			Scale:
			SEE PLAN

**BERGEN COUNTY**  
**INTERSECTION IMPROVEMENTS ON**  
**NORTH MAPLE AVE & FRANKLIN AVE**  
**VOR 104a - GRADING PLAN**  
**FRANKLIN AVENUE CORRIDOR (1)**

File No.: 19026  
 Sheet No.: X OF XX







**Christopher J. Rutishauser**  
 Professional Engineer  
 New Jersey License No. 33373  
**PRELIMINARY**

**VILLAGE OF RIDGEWOOD**  
 Department of Public Works  
 Division of Engineering  
 131 North Maple Avenue  
 Ridgewood, New Jersey 07450-3287  
 201-670-5500 x 238

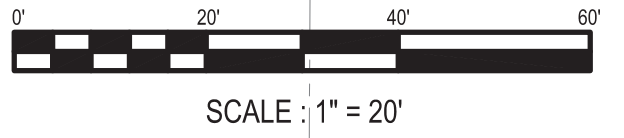
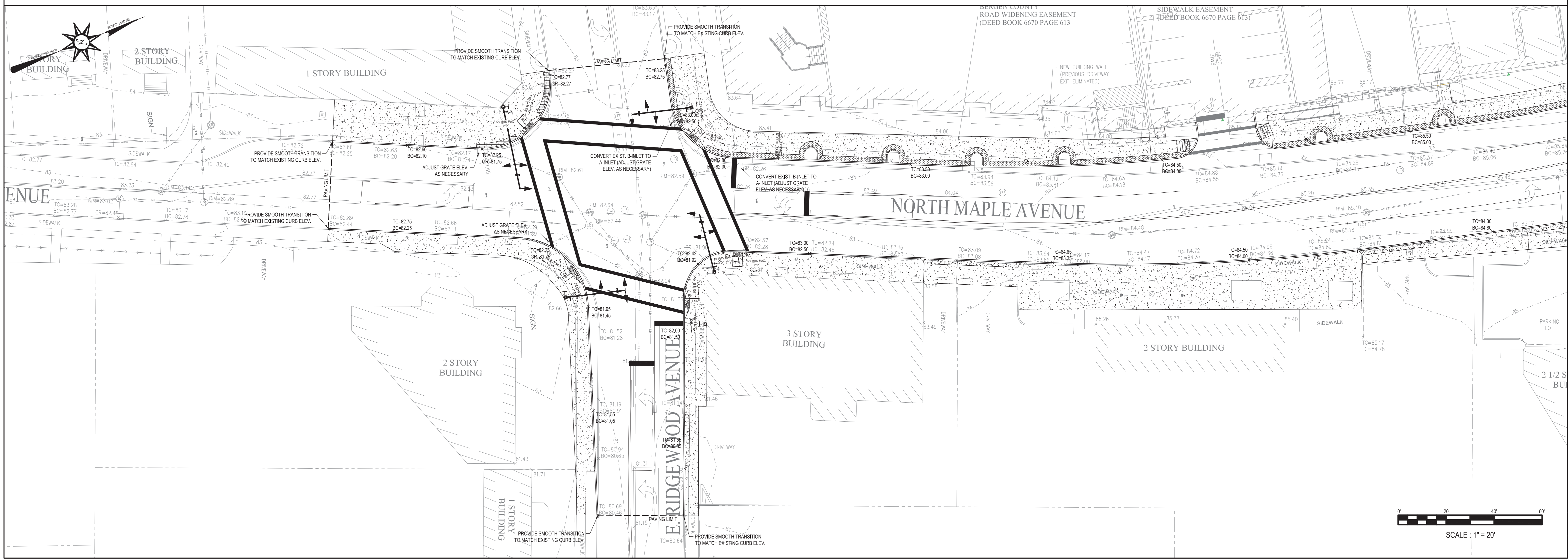
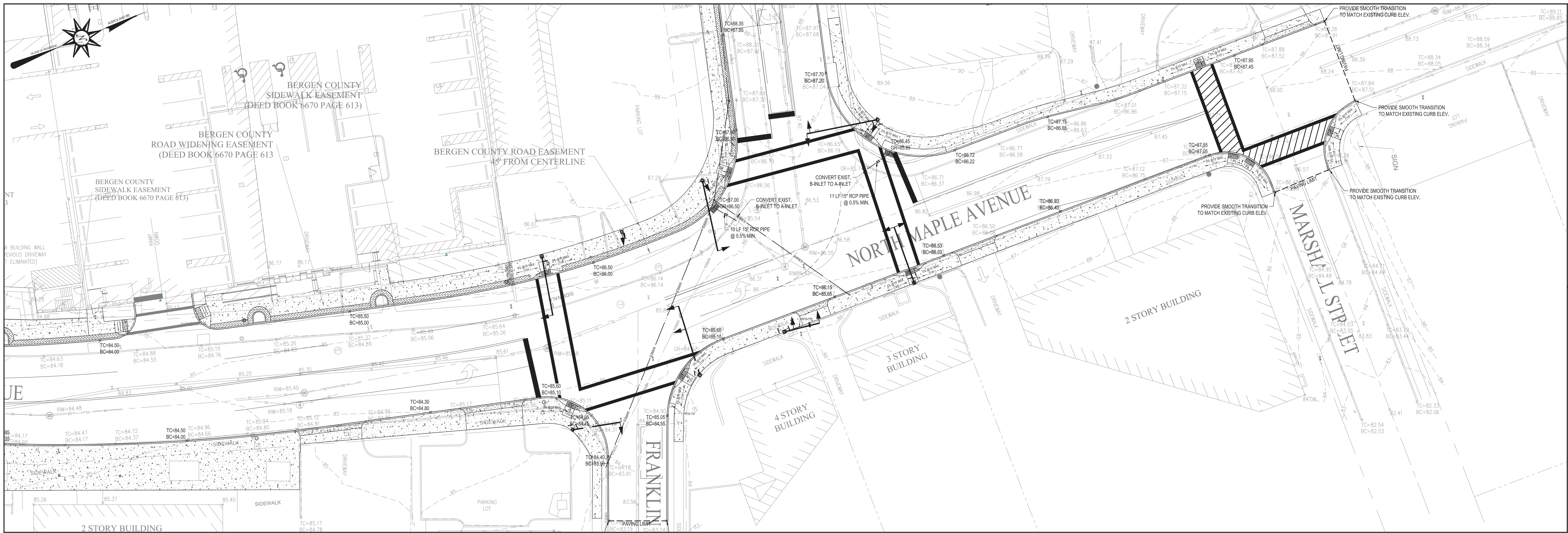
Date	Revision	By	Issue Date:
03/04/21	Submission to Village Council	BMD	6/17/19

**BERGEN COUNTY**  
**INTERSECTION IMPROVEMENTS ON**  
**NORTH MAPLE AVE & FRANKLIN AVE**  
**VOR104b - GRADING PLAN**  
**FRANKLIN AVENUE CORRIDOR (2)**

File No.: 19026  
 Sheet No.: X OF XX







**Christopher J. Rutishauser**  
 Professional Engineer  
 New Jersey License No. 331373  
**PRELIMINARY**  
 Date \_\_\_\_\_

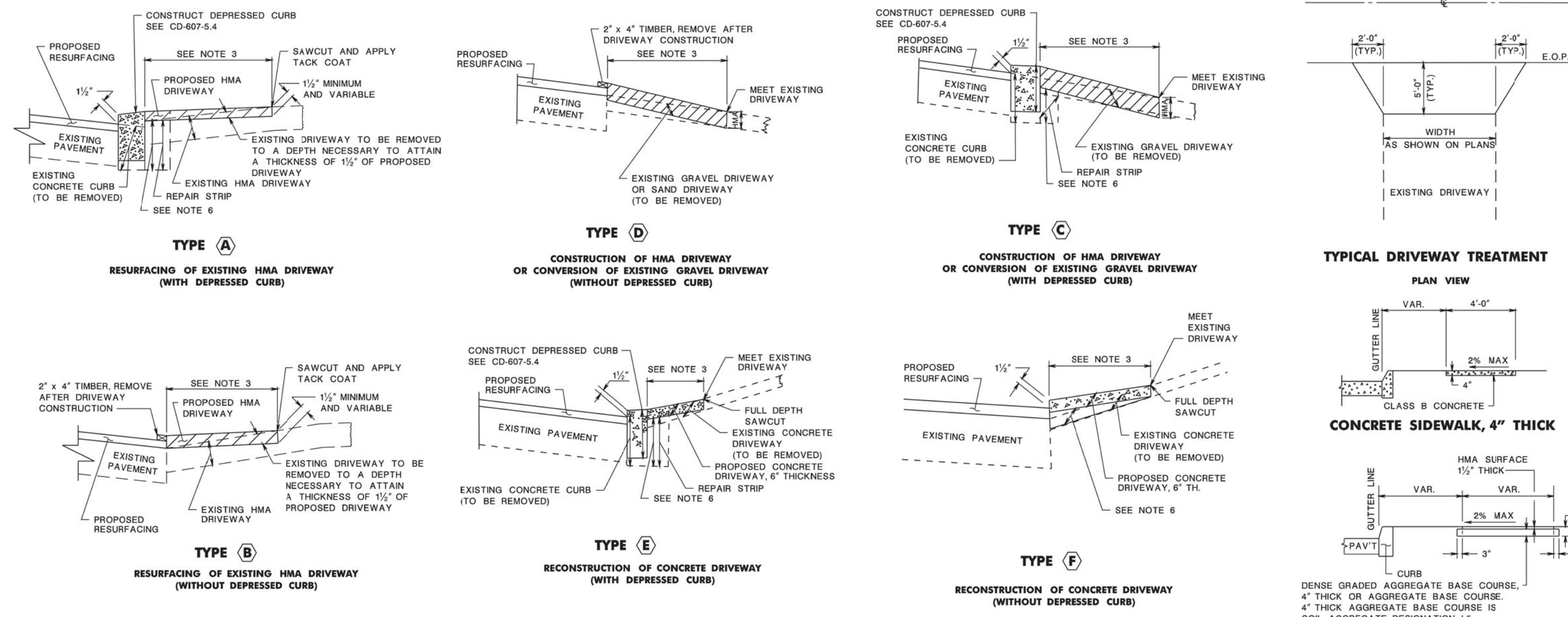
**VILLAGE OF RIDGEWOOD**  
 Department of Public Works  
 Division of Engineering  
 131 North Maple Avenue  
 Ridgewood, New Jersey 07450-3287  
 201-670-5500 x 238

<b>Issue Date:</b>	6/17/19
<b>By:</b>	BMD
<b>Revision:</b>	
<b>Submission to Village Council:</b>	
<b>Date:</b>	03/04/21
<b>Scale:</b>	SEE PLAN

**BERGEN COUNTY**  
**INTERSECTION IMPROVEMENTS ON**  
**NORTH MAPLE AVE & FRANKLIN AVE**  
**VOR104c - GRADING PLAN**  
**N. MAPLE AVENUE**

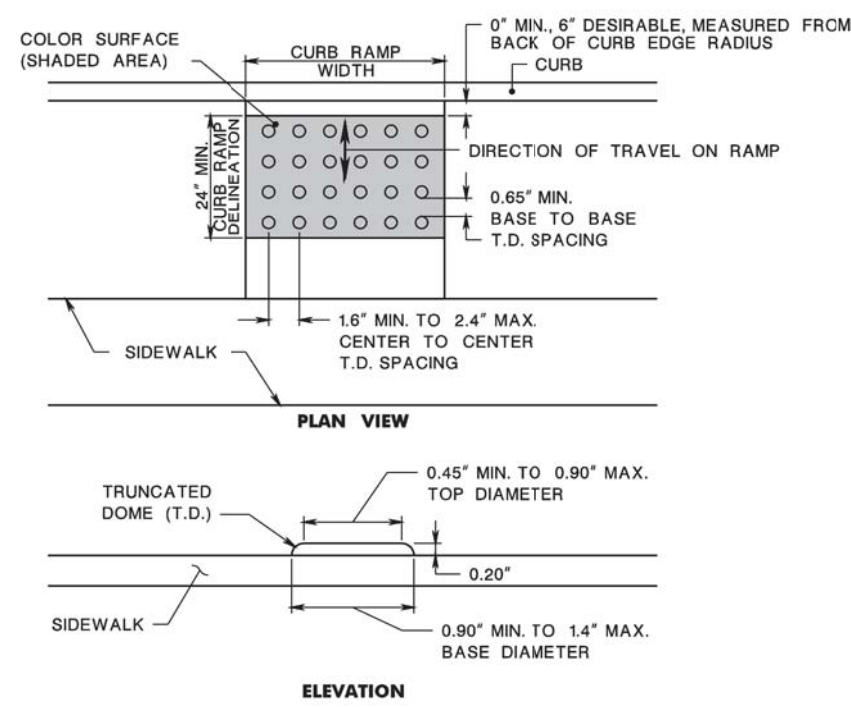
File No.: 19026  
 Sheet No.: X OF XX





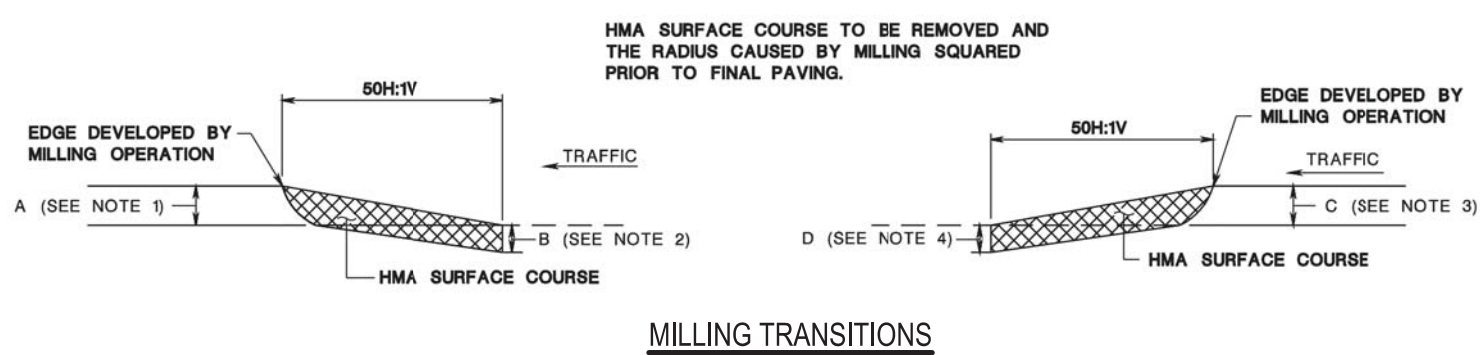
- GENERAL NOTES:
- ALL MATERIAL, REPAIR STRIPS, AND EXCAVATION FOR DRIVEWAY CONSTRUCTION TO BE INCLUDED IN THE BID PRICE FOR HMA DRIVEWAY, CONCRETE DRIVEWAY, OR CONCRETE CURB.
  - USE HMA SURFACE COURSE FOR HMA DRIVEWAY.
  - CONSTRUCT 5 FEET LONG DRIVEWAY UNLESS OTHERWISE SHOWN ON PLANS OR AS DIRECTED.
  - MAINTAIN EXISTING DIRECTION OF FLOW ON DRIVEWAY.
  - USE DENSE GRADED AGGREGATE BASE COURSE TO PROVIDE TEMPORARY ACCESS DURING DRIVEWAY CONSTRUCTION.
  - DENSE GRADED AGGREGATE BASE COURSE.
  - WHERE SIDEWALK CROSS DRIVEWAY, PROVIDE A 2% MAXIMUM SIDEWALK CROSS SLOPE WITHIN DRIVEWAY AREA.

**NJDOT CONCRETE/HMA DRIVEWAY & SIDEWALK DETAIL**  
NOT TO SCALE



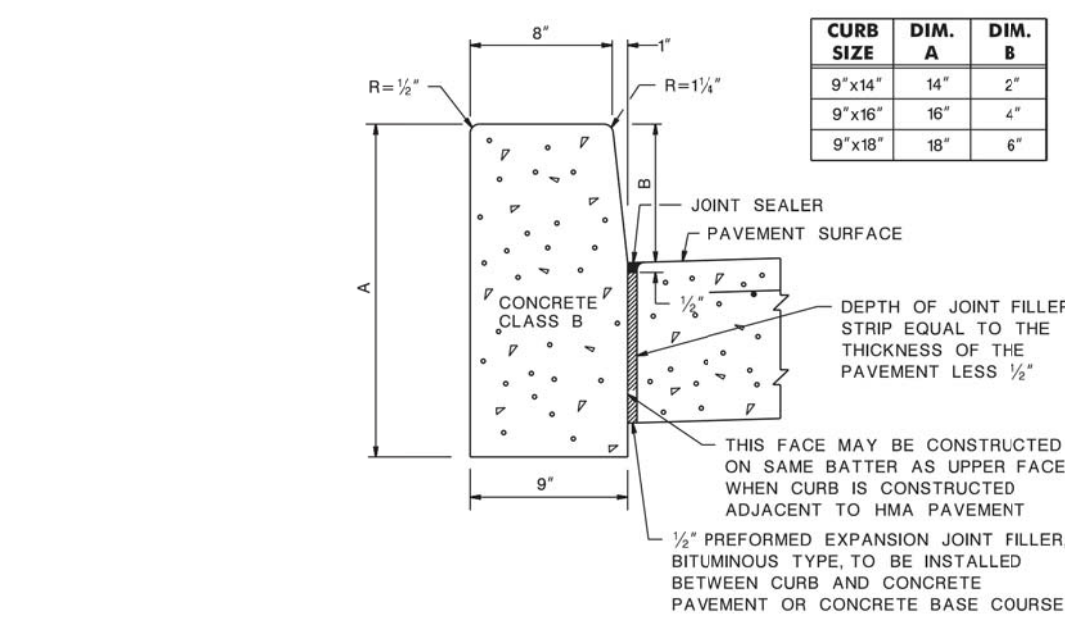
- NOTES:
- KEEP TURNING SPACE, APPROACH SIDEWALK TRANSITIONS, AND CURB RAMP CLEAR OF OBSTRUCTIONS THAT PROTRUDE ABOVE THE SURFACE.
  - CROSSWALKS AND STOP LINES MAY BE MARKED OR UNMARKED. SEE PLANS.
  - CONSTRUCT CURB RAMP TYPES 1, 2, 3, 4, & 7 PERPENDICULAR TO CURBLINE.
  - IF A CURB RAMP IS REQUIRED, THE LOCATION OF THE DETECTABLE WARNING SURFACE MUST BE AT THE BOTTOM OF THE RAMP AND WITHIN THE REQUIRED DISTANCE FROM THE RAIL.
  - A STANDARD DETECTABLE WARNING (DWS) SURFACE IS NOT AVAILABLE TO FIT THIS APPLICATION, AND THEREFORE ONE WILL NEED TO BE CUSTOMIZED. THE DWS SHOULD COVER THE ENTIRE WIDTH OF THE RAMP. THE ROWS OF DOMES ON THE DWS SHOULD FOLLOW THE DIRECTION OF TRAVEL OF THE RAMP. SO PEDESTRIANS WHO USE MOBILE DEVICES CAN TRACK BETWEEN THE DOMES.

**NJDOT DETECTABLE WARNING SURFACE DETAIL**  
NOT TO SCALE

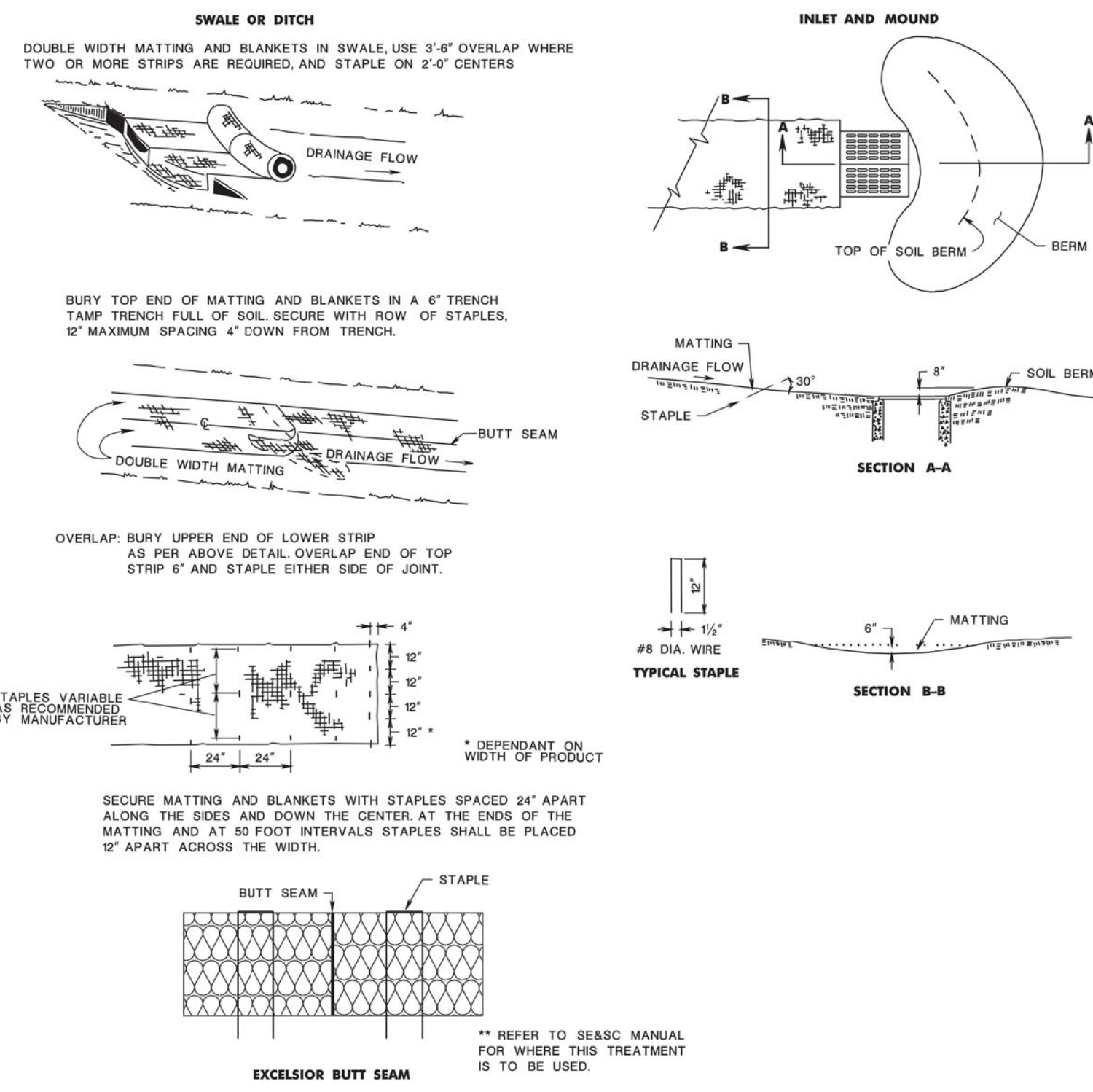


- NOTE:  
REMOVE THE HMA MATERIAL LEFT BY THE DRUM RADIUS AT THE LIMITS OF THE MILLING OPERATION. ENSURE THAT THE FACE IS CLEAN AND VERTICAL BY SAWCUTTING OR TRANSVERSE MILLING. THIS END TREATMENT IS NOT APPLICABLE TO TEMPORARY LIMITS OF MILLING (i.e. END OF WORKDAY). IT IS APPLICABLE TO ALL AREAS WHERE THE COMPLETED MILLING OPERATION MATCHES ANY EXISTING PAVEMENT INCLUDING BRIDGES.
- END TREATMENT FOR MILLING OPERATIONS**
- NOTES:
- USE HMA SURFACE COURSE IN THE MILLING TRANSITION WHEN LEADING EDGE DEVELOPED BY MILLING OPERATION IS EQUAL TO OR GREATER THAN 1 INCH. NONE REQUIRED FOR EDGE LESS THAN 1 INCH.
  - ENSURE THAT THE THICKNESS OF THE HMA SURFACE COURSE IN THE MILLING TRANSITION IS NOT LESS THAN B. B IS EQUAL TO 2 INCHES OR A, WHICHEVER IS LESS.
  - USE HMA SURFACE COURSE IN THE MILLING TRANSITION WHEN TRAILING EDGE DEVELOPED BY MILLING OPERATION IS EQUAL TO OR GREATER THAN 1 1/2 INCHES. NONE REQUIRED FOR EDGE LESS THAN 1 1/2 INCHES.
  - ENSURE THAT THE THICKNESS OF THE HMA SURFACE COURSE IN THE MILLING TRANSITION IS NOT LESS THAN D. D IS EQUAL TO 2 INCHES OR C, WHICHEVER IS LESS.

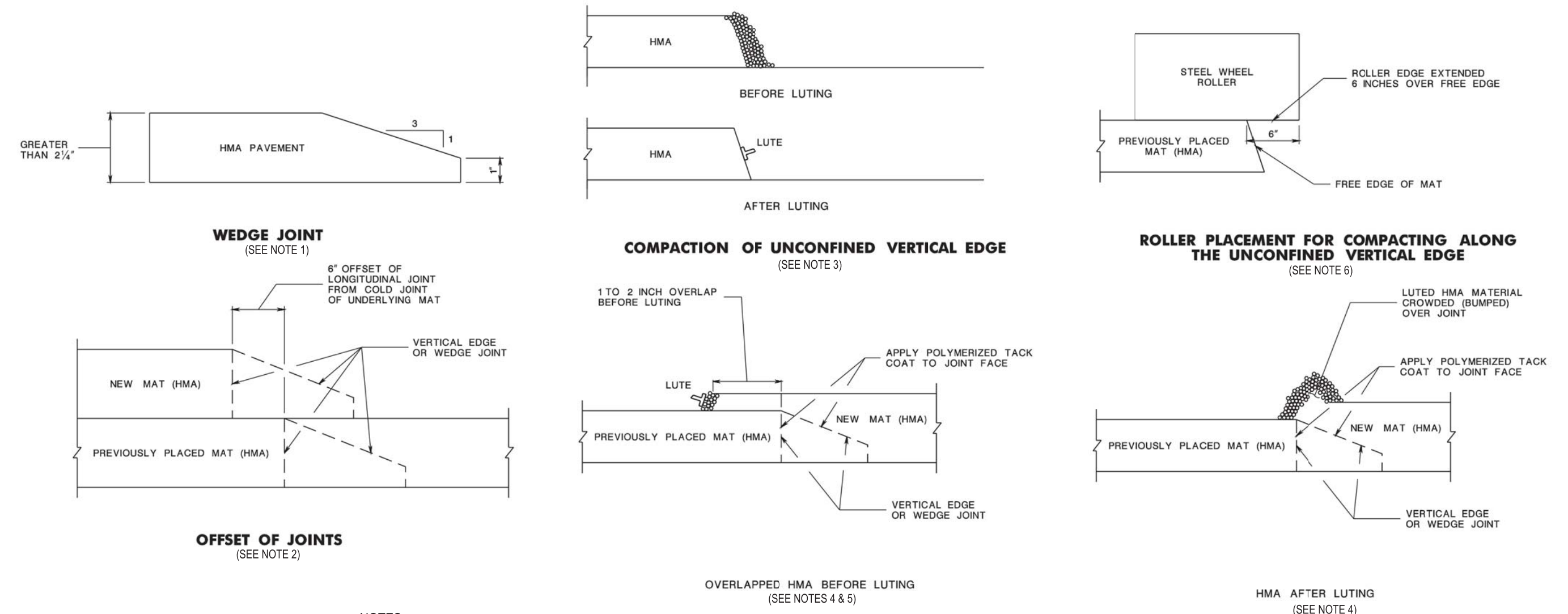
**NJDOT MILLING DETAIL**  
NOT TO SCALE



**NJDOT CONCRETE CURB DETAIL**  
NOT TO SCALE

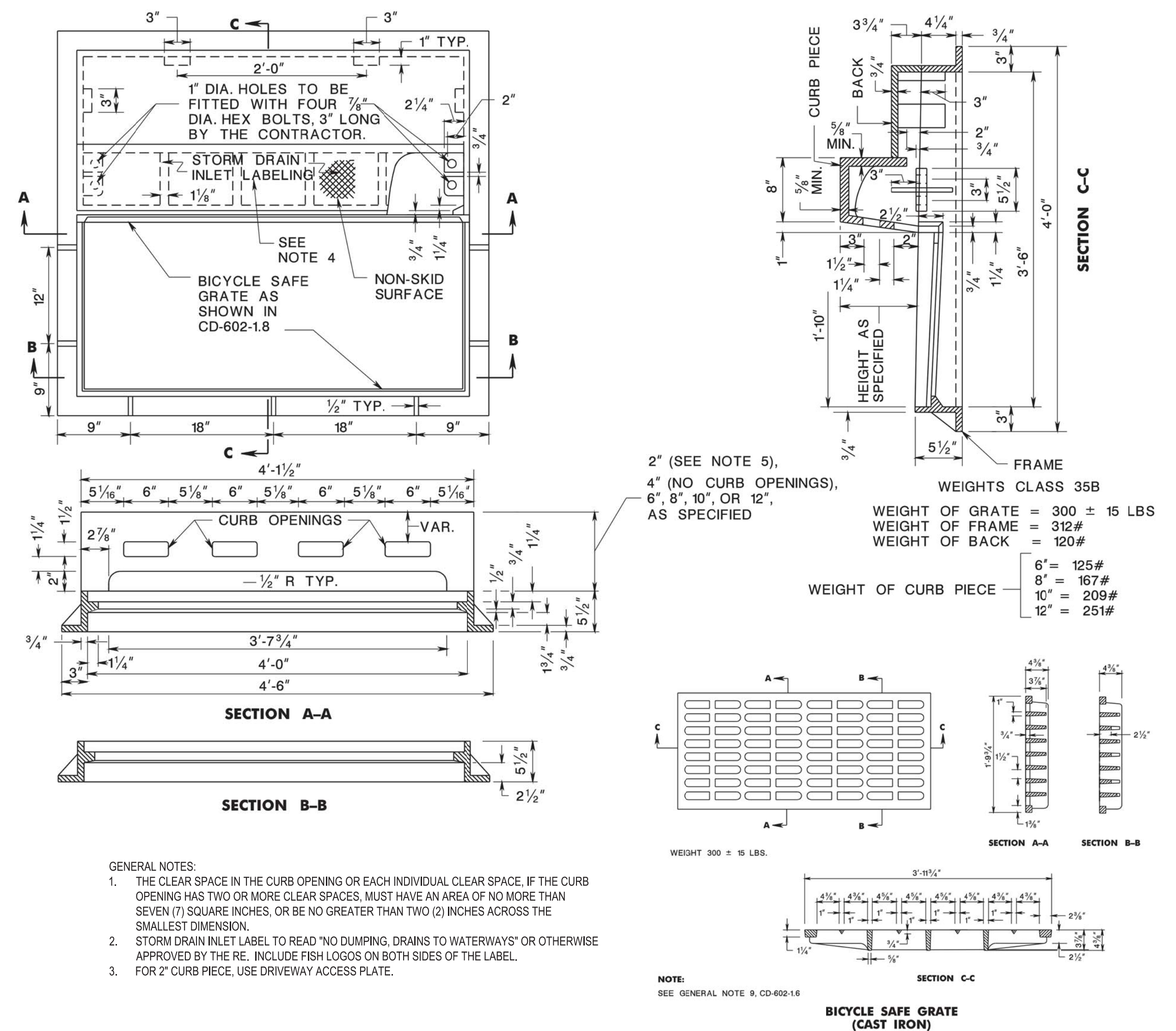


**NJDOT TOPSOIL STABILIZATION DETAIL**  
NOT TO SCALE



- NOTES:
- WHEN HMA LIFT THICKNESS IS GREATER THAN 2 1/2 INCHES AND WHEN TRAFFIC IS TO BE MAINTAINED, CONSTRUCT A WEDGE JOINT.
  - ENSURE THAT THE JOINT IN THE HMA SURFACE COURSE IS OFFSET FROM THE LANE LINES BY 6 INCHES. IN THE CENTERLINE OF A ROADWAY, ENSURE THAT THE JOINT FALLS BETWEEN THE DOUBLE YELLOW TRAFFIC STRIPE.
  - ENSURE THE LUTE OPERATOR MANUALLY BUMPS THE EDGE TO OBTAIN A TRUE VERTICAL AND DENSE UNCONFINED EDGE.
  - ENSURE THAT THE OVERLAPPED HMA MATERIAL AT THE JOINT IS TIGHTLY CROWDED (BUMPED) OVER THE JOINT ONTO THE NEWLY PLACED LANE LEAVING A SMALL MOUND OF MIX HUMPED UP FOR THE ROLLERS TO COMPACT.
  - FOR THE WEDGE JOINT, ENSURE THAT COARSE AGGREGATE PARTICLES ARE KEPT AWAY FROM THE POINT WHERE THE WEDGE MEETS THE SURFACE OF THE PREVIOUSLY PLACED LANE.
  - TO PREVENT LATERAL DISPLACEMENT OF THE UNCONFINED EDGE, ENSURE THAT THE EDGE OF THE ROLLER WHEEL EXTENDS OVER THE FREE EDGE OF THE HMA MAT BY AT LEAST 6 INCHES.

**NJDOT LONGITUDINAL JOINTS DETAIL**  
NOT TO SCALE



- GENERAL NOTES:
- THE CLEAR SPACE IN THE CURB OPENING OR EACH INDIVIDUAL CLEAR SPACE, IF THE CURB OPENING HAS TWO OR MORE CLEAR SPACES, MUST HAVE AN AREA OF NO MORE THAN SEVEN (7) SQUARE INCHES, OR BE NO GREATER THAN TWO (2) INCHES ACROSS THE SMALLEST DIMENSION.
  - STORM DRAIN INLET LABEL TO READ "NO DUMPING, DRAINS TO WATERWAYS" OR OTHERWISE APPROVED BY THE RE. INCLUDE FISH LOGOS ON BOTH SIDES OF THE LABEL.
  - FOR 2" CURB PIECE, USE DRIVEWAY ACCESS PLATE.

**NJDOT INLET DETAILS**  
NOT TO SCALE

Christopher J. Rutishauser  
Professional Engineer  
New Jersey License No. 34378

**PRELIMINARY**

VILLAGE OF RIDGEWOOD  
Department of Public Works  
Division of Engineering  
131 North Maple Avenue  
Ridgewood, New Jersey 07450-5287  
201-670-5500 x 238

Issue Date:	6/17/19
By:	BMD
Revision:	Submission to Village Council
Date:	03/04/21
Scale:	SEE PLAN

BERGEN COUNTY  
INTERSECTION IMPROVEMENTS ON  
NORTH MAPLE AVE & FRANKLIN AVE  
VOR 104 - CONSTRUCTION DETAILS



